

## Installation

## Overview

### About the program

*MHC Interactive: GED* combines multimedia instruction with Internet-based management to provide integrated courseware that's flexible, thorough, and reliable.

*MHC Interactive: GED Online* allows online registration, data capture, transfer and reporting. Web technology lets users log into the program anywhere they have a connection, anytime that's convenient for them.

*MHC Interactive: GED* CD provides instructional content designed to prepare students for success on the GED tests. Upon completing the program's tests and lessons, students should be confident that they will score well in the five subject-area tests: writing, social studies, science, reading, and mathematics.

### Requirements

#### Computer

Windows 98, NT, 2000, XP  
Pentium II, AMD K6-2, or  
better processor  
64 MB RAM  
14" color monitor  
8x or better CD-ROM  
Sound card/headphones  
Microsoft Internet Explorer v 5.0  
or higher  
Internet access

#### Installation

Free hard disk space—550 MB

#### Settings

800 x 600 screen resolution  
256 (8-bit) colors (minimum)  
thousands (24 or 32-bit) color  
(preferred)

## GED ONLINE

### Installation

Step-by-step directions describe how to install the instructional content from the CD. To see or print a copy of the user manual in *PDF* format, click on the [Open Manual](#) button during installation.

### Getting ready

Disable any pop-up blocker software. *GED Online* needs to open multiple windows. You can enable the blocker again when you are finished using *GED Online* for the day.

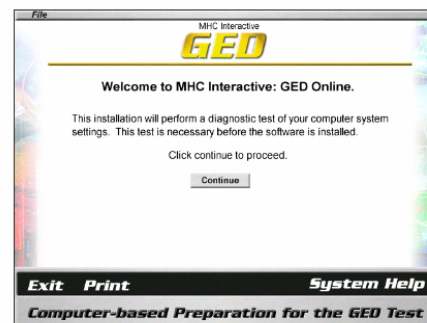
- 1 Insert the *MHC Interactive: GED ONLINE* CD into your CD drive.
- 2 From MY COMPUTER, find and open your CD-ROM disk drive.
- 3 Click on INSTALL.EXE.

### Diagnostic tests

A check of your computer determines if you have:

- a color depth of 256 colors or higher
- screen resolution of 800 x 600 pixels
- the proper Arial font installed
- the proper version of QuickTime installed

If your computer fails any of these tests, you will receive further instructions. If your computer passes these tests, a [Continue](#) button will appear. Click the button.



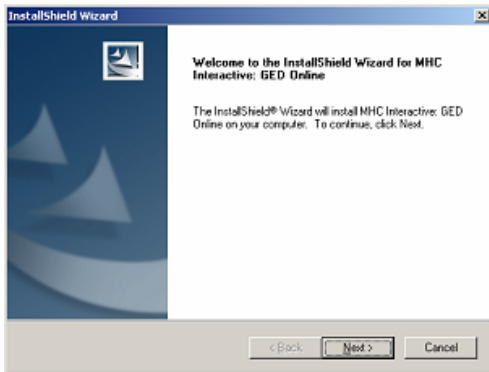
## Choosing an installation type

You are ready to choose an installation type: network, local hard drive, or CD-ROM. For an explanation of each, roll your cursor over the check boxes.

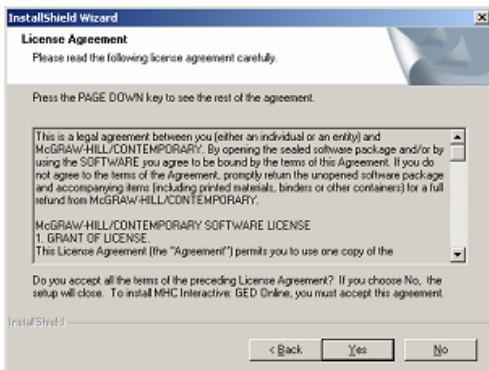
Once you have clicked on an installation type, you can change your mind (Cancel) or confirm your choice (Install). You can also choose to view (View Instructions) or print (Print Instructions) installation instructions before continuing.

## Installing content files

- 1 WAIT while the installer setup runs. When you see installer “Welcome” screen, click Next.

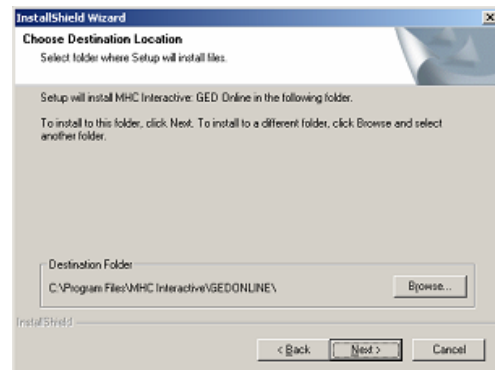


- 2 The following screen contains the software license agreement for this product. Read it and click Yes when you are ready to continue.



- 3 On the next screen, choose a destination where you want to install the program files. The default location (destination folder) for all installation types is:

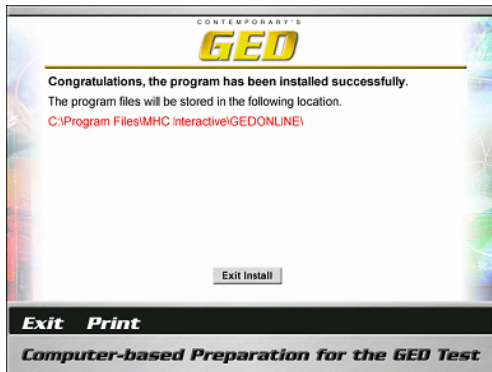
*C:\Program Files\MHC Interactive\GEDONLINE\.*



**Note:** To install the program in a different location, click Browse and create a new folder, preferably *MHC GED Online*, in the path field. This folder name should follow the chosen drive letter in the path field. For example, the entry to the path field might read *X:\MHC GED Online*, where *X* is the drive letter and *MHC GED Online* is the folder you want to create. Click OK once you have chosen a new location.

- 4 When you are satisfied with the location you have chosen, click Next. Wait while the program content files are installed and the progress bar reaches 100%.

- 5 Congratulations! You have successfully completed installation. This last screen reminds you where the program content files were installed. Click Exit Install.



**Note:** If you installed the content files to a network server, you need to link *MHC Interactive: GED Online* to the network clients. On a client machine:

- 1 From MY COMPUTER, find and open the folder on the server where you installed *MHC Interactive: GED Online*.
- 2 Click on *Client Setup* or *Client Setup.exe*.
- 3 The installer "Welcome" screen appears, while the installer checks the client computer's settings. When it is done, click Continue.
- 4 An explanation of the client setup appears. Read it and click Finish.
- 5 The client setup will end. There will be a new menu tree in the Programs menu. Click on Start\Programs\MHC Interactive\GED Online\GED Online to launch the program.