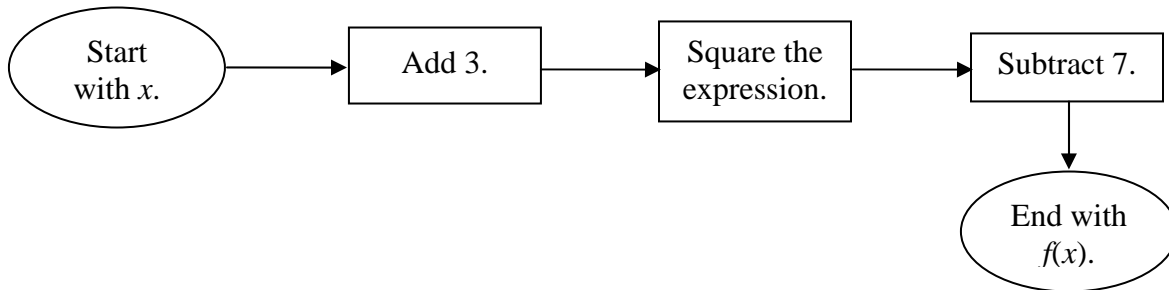


Example

The following flow chart describes a function of a number, x . Write a mathematical expression to describe this function.



First the function starts with x , and then 3 is added. The expression at this stage in the flowchart will be $x + 3$. Next the number is squared, so the expression should be $(x + 3)^2$. Then 7 is subtracted, so the final function can be written as $f(x) = (x + 3)^2 - 7$.