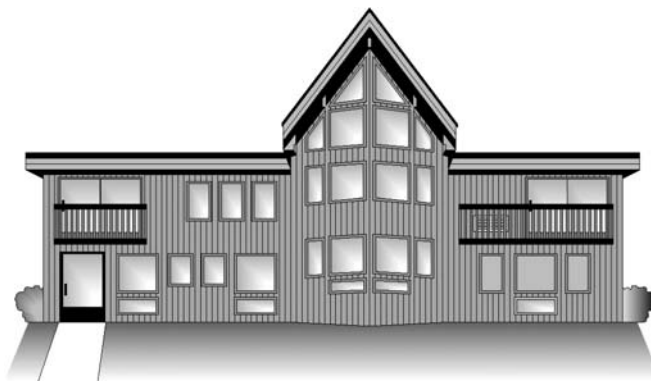


5-3**Real-Life Career Activity*****Property Manager***

Property managers are responsible for properties such as apartment complexes. They have many duties, including renting apartments to new tenants, arranging to have repairs made, and collecting rent. They also oversee the landscaping and maintenance of the grounds. During icy weather, the property manager makes sure that ice does not form on the walkways around the apartment complex. If the walkways are icy, tenants may slip and hurt themselves.



Suppose a property manager has a container of pellets for melting ice. The label on the container says that 4 ounces of pellets will melt 1 square yard of ice. One square yard is the same as 9 square feet. The manager wants to know how much ice 1 ounce of pellets will melt.

4 ounces will melt 9 square feet.

1 ounce will melt $\frac{9}{4}$ square feet.

One ounce of pellets will melt $\frac{9}{4}$ square feet of ice.

You can write this amount as a mixed number.

$$\frac{9}{4} = 2\frac{1}{4}$$

One ounce of pellets will melt $2\frac{1}{4}$ square feet of ice.

Solve.

- Two ounces of pellets will melt $\frac{18}{4}$ square feet of ice. Write $\frac{18}{4}$ as a mixed number.
- Three ounces of pellets will melt $\frac{27}{4}$ square feet of ice. Write $\frac{27}{4}$ as a mixed number.
- Five ounces of pellets will melt $11\frac{1}{4}$ square feet of ice. Write $11\frac{1}{4}$ as an improper fraction.