

Family Letter

Dear Parent or Guardian:

"When am I ever going to use this stuff?" Students in math classes often ask this question. Too often, math seems to be a series of procedures that one learns and then uses to solve a particular type of problem—without having any application to the real world. In our math class, however, we try to take mathematics beyond the classroom to a point where students will realize and appreciate its importance in their daily lives.

In **Chapter 4, Proportions, Algebra, and Geometry**, your child will learn about ratios, rates, and proportions. Your child will also learn about slope as a rate of change and will find the slope of a line. In addition, your child will learn to make scale models and use indirect measurement. In the study of this chapter, your child will complete a variety of daily classroom assignments and activities and possibly produce a chapter project.

By signing this letter and returning it with your child, you agree to encourage your child by getting involved. Enclosed is an activity that you can do with your child that also relates the math we will be learning in Chapter 4 to the real world. You may also wish to log on to the **Online Study Tools** for self-check quizzes, Parent and Student Study Guide pages, and other study help at www.msmath3.net. If you have any questions or comments, feel free to contact me at school.

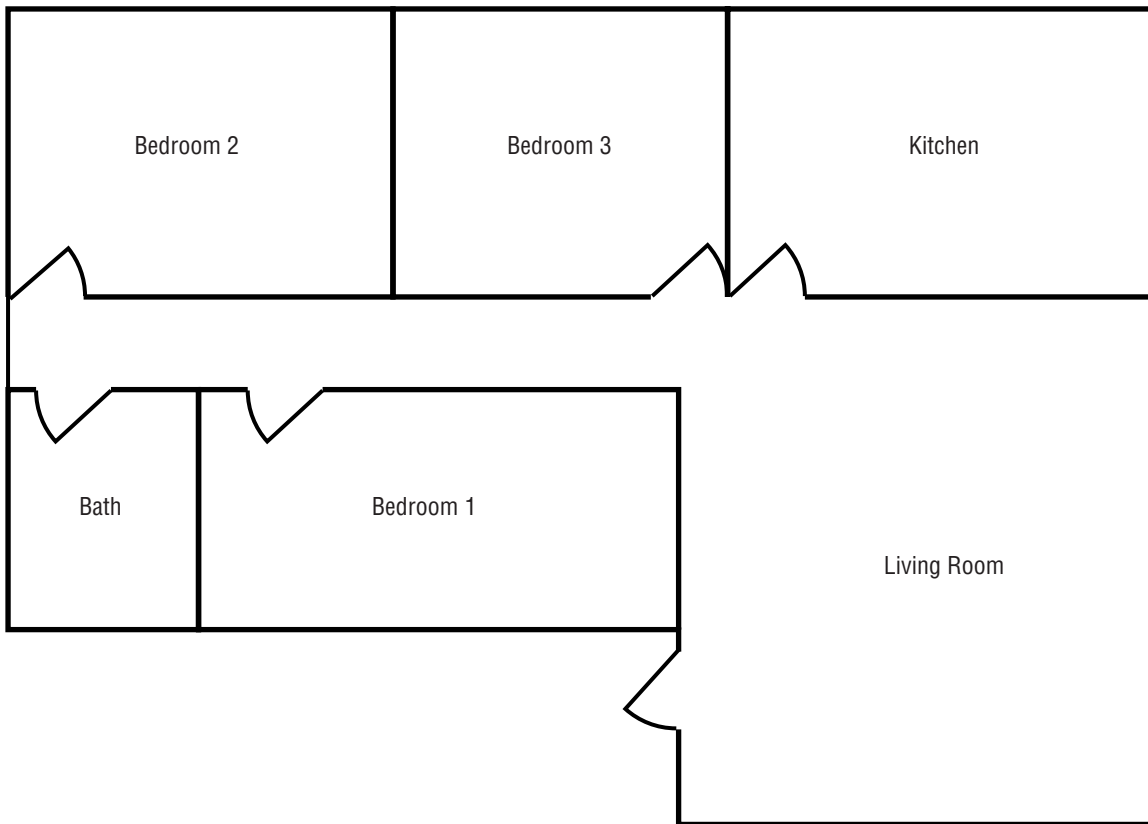
Sincerely,

Signature of Parent or Guardian _____ Date _____

Family Activity

Scale Drawings and Models

Work with a family member. Below is a scale drawing of a house plan. The scale for the drawing is $\frac{1}{2}$ inch = 3 feet. Use the drawing to answer the following questions. You will need a ruler to complete this activity.



1. What are the dimensions of the kitchen in the drawing?
2. What are the dimensions of the kitchen in real life?
3. What is the area of Bedroom 2 in the drawing?
4. What is the area of Bedroom 2 in real life?
5. How many square feet of carpet will be needed to carpet the living room and the hallway?