

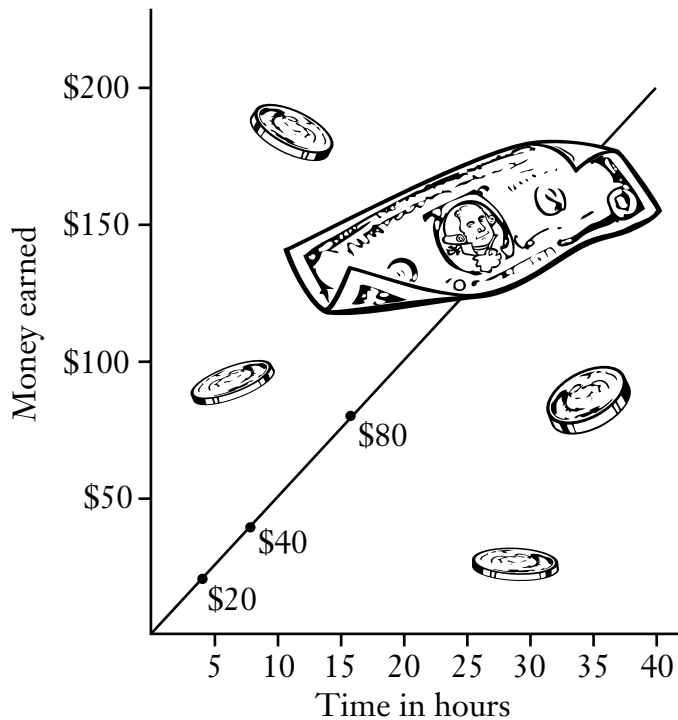
CHAPTER 5 POPULATION BIOLOGY

Section 5.1 Population Dynamics

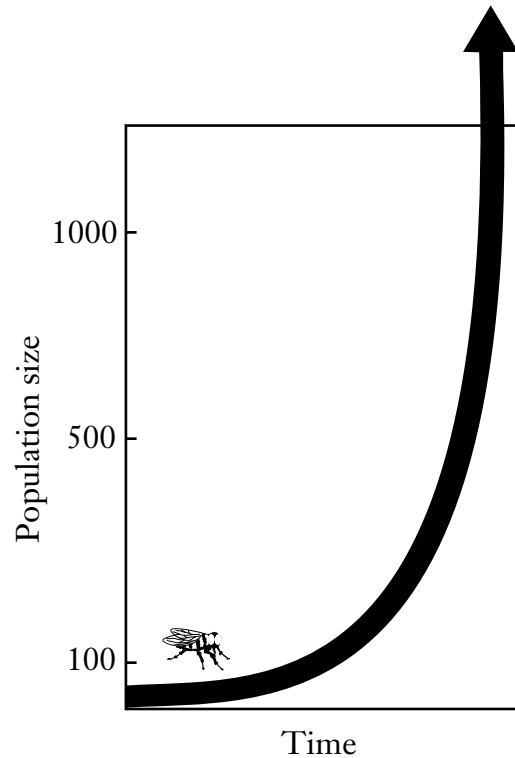
Section 5.2 Human Population Growth

Study the Graphs

Use the graphs to answer the questions.



This graph shows the growth of a weekly paycheck. The straight line shows that the more hours you work, the more you earn.



The curve shows that a population of house flies grows more rapidly over time. This growth is called **exponential growth**. This type of growth makes a J-shaped curve on a graph.

- Which graph shows a steady rate of growth? _____
- Which graph shows growth at an increasingly fast rate? _____

- If you graphed the population growth of household cockroaches, would the graph show a straight line or J-shaped curve? Explain your answer. _____

