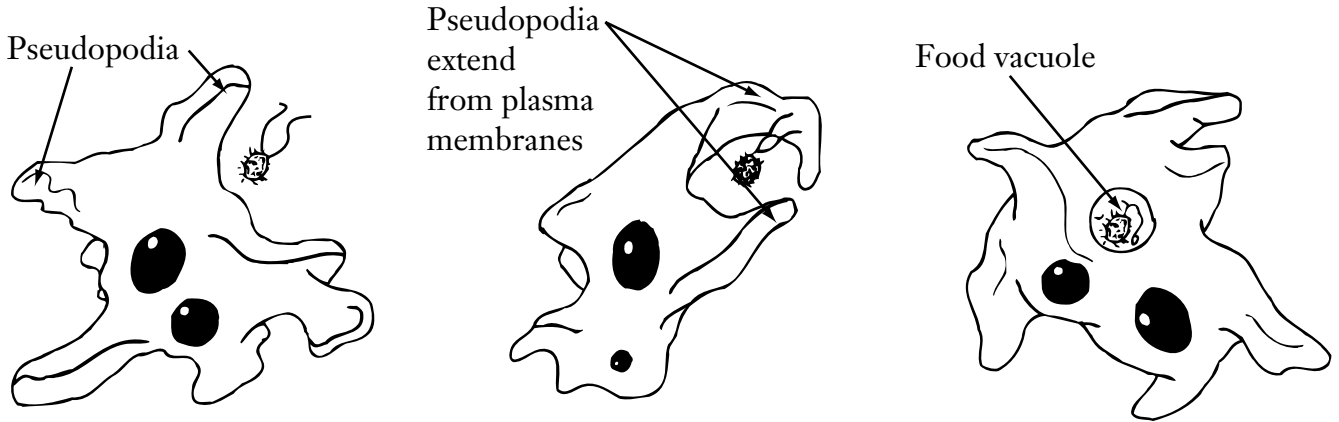


CHAPTER 22 PROTISTS

Section 22.1 The World of Protists
Study the Diagram

Use the diagram to answer the questions.



A. An amoeba senses food nearby. Pseudopodia reach out toward the food.

B. The amoeba captures the food. The food vacuole encloses the food.

C. Digestive enzymes in the food vacuole break down the food.

1. What does an amoeba use its pseudopodia for? _____

2. Where does an amoeba digest its food? _____

