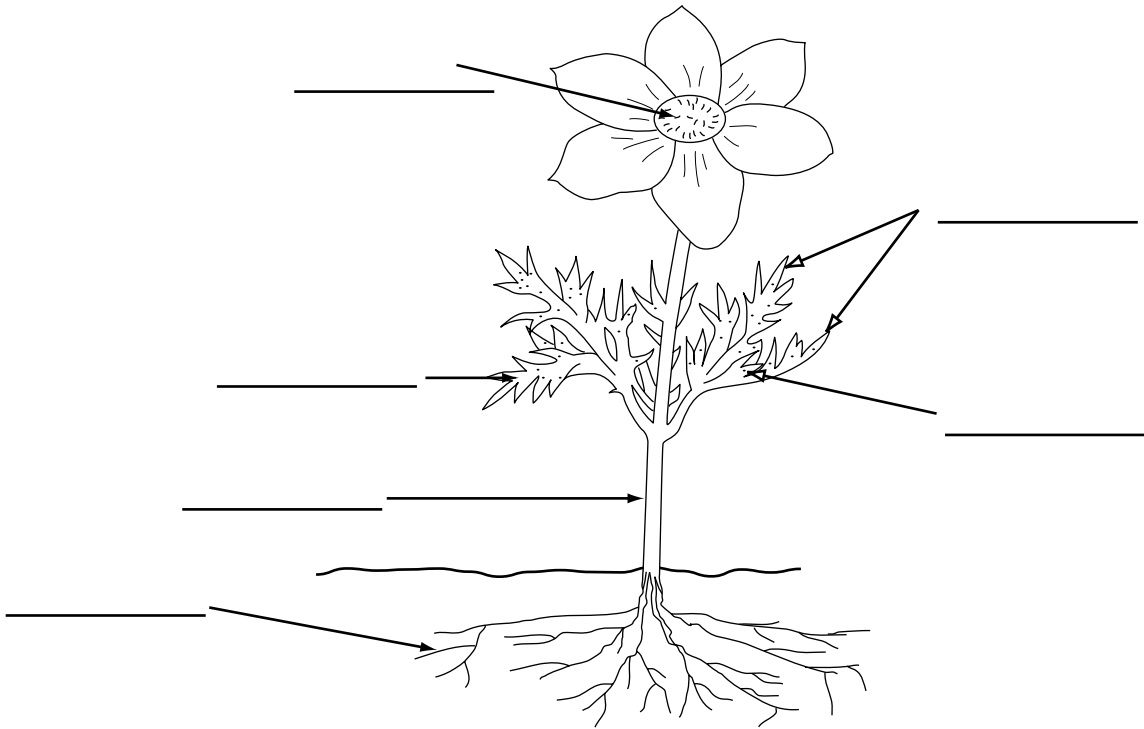


CHAPTER 24 WHAT IS A PLANT?

Review the Key Terms

Use the Chapter 24 key terms in the box to label the parts of the plant.

cuticle (KYEW tih kul)
 leaf
 root
 seed
 stem
 stomata (stoh MAT uh)



Look at the key term statements below. If the statement is true, write *T* on the line. If the statement is false, write *F*.

- _____ 1. The **antheridium** is a structure in which sperm are produced.
- _____ 2. The **archegonium** (are kih GOH nee um) is formed by germination of a moss spore.
- _____ 3. **Vegetative** reproduction is asexual reproduction in plants.
- _____ 4. The **protonema** (proh tuh NEE muh) is the structure in which eggs are produced.
- _____ 5. **Gemmae** (JEM ee) are haploid structures that form new liverworts or mosses.