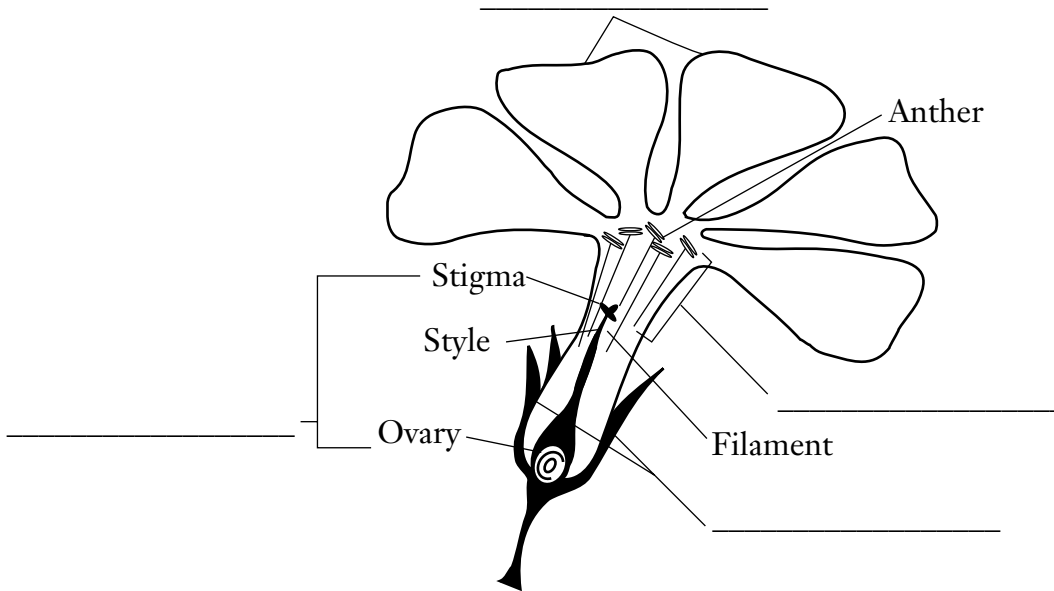


CHAPTER 27 REPRODUCTION IN FLOWERING PLANTS

Section 27.1 What Is a Flower? Study the Diagram

Use the diagram to answer the questions.



- Label the diagram with the following parts of a flower.
 Stamen—male part of the flower; pollen is made in the anther
 Pistil—female part of the flower; the ovary will become the fruit
 Petals—often brightly colored to attract insects and birds
 Sepals—protect the flower bud
- Complete flowers have all four parts, but some flowers are incomplete. Some plants have separate male and female flowers. Draw an incomplete female flower next to the complete flower in the diagram.
- Self-pollination occurs when pollen fertilizes the eggs of the same flower or plant. Draw an arrow from an anther to a stigma to show self-pollination. Label the arrow S.