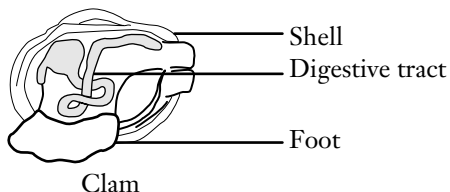
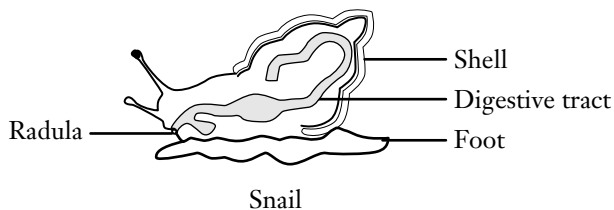


CHAPTER 30 MOLLUSKS AND SEGMENTED WORMS

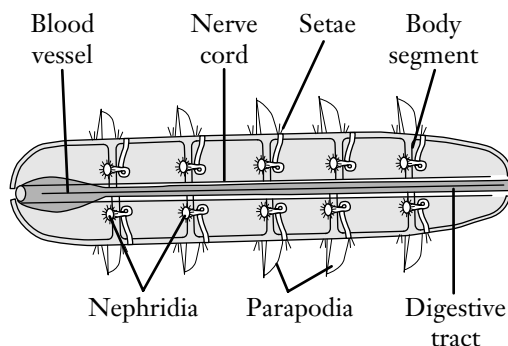
Get the Big Picture

Read the paragraphs in the boxes and study the pictures. Then answer the questions.

Did you know that the simple garden snail is a close relative of the squid? Both these animals are **mollusks**, one of the largest groups of animals on Earth. Some mollusks, like the clam and the beautiful sea snails named gastropods, have shells. Most mollusk shells are secreted by the mantle. The mantle cavity may have gills for gas exchange. Mollusks usually have a large hump that holds the intestines. Their mouthparts look like a zipper and are called a **radula**. All mollusks have a free-swimming larval stage. Most adult mollusks have a foot that can be used in a variety of ways, including movement. Most mollusks live in the ocean or in other wet environments. Mollusks will die if they dry out.



Two Members of the Mollusk Group



A Generalized Annelid

Annelid worms are found in the ocean and on land. The term **annelida** means “ringed,” and the bodies of these animals have repeating body segments. Some worms have footlike projections on their segments, called **parapodia**, for movement. Others, like the earthworm, have very small hairs called **setae**. Most marine annelids are filter feeders. These annelids live in tubes in the mud and extend feathery arms into the water to capture floating organic food. Annelids need to live in moist environments because they will die if they dry out.

1. How are mollusks and annelids similar? _____

2. How are mollusks and annelids different? _____

