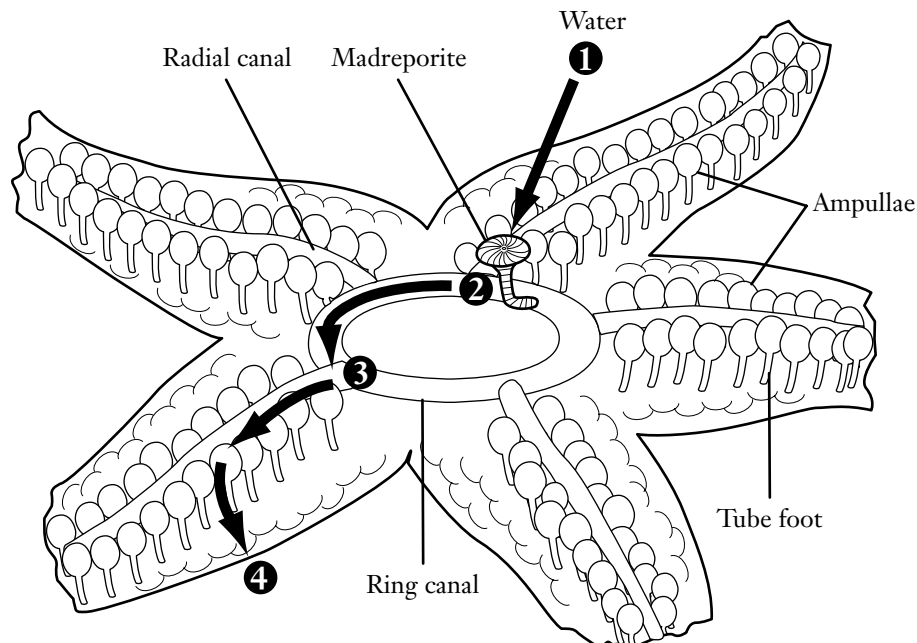


CHAPTER 32 ECHINODERMS AND INVERTEBRATE CHORDATES**Section 32.1 Echinoderms**
Study the Diagram

Read the paragraph in the box. Then use the diagram to answer the question.

How Do Echinoderms Move?

All echinoderms have hundreds of tube feet. Each foot has a suction cup on the end. Echinoderms use their tube feet to creep along the ocean floor. They also use them to pry open the shells of mollusks to get food. In addition to tube feet, all echinoderms have a water vascular system. One of the main uses of this system is to create water pressure to move the tube feet.



1. Write numbers to order the steps of water flow from the madreporite to the starfish's tube feet.

_____ Ampullae contract to squeeze water into the tube feet.

_____ Water enters the madreporite.

_____ Water flows from the ring canal into the radial canals.

_____ Water flows from madreporite to the ring canal.