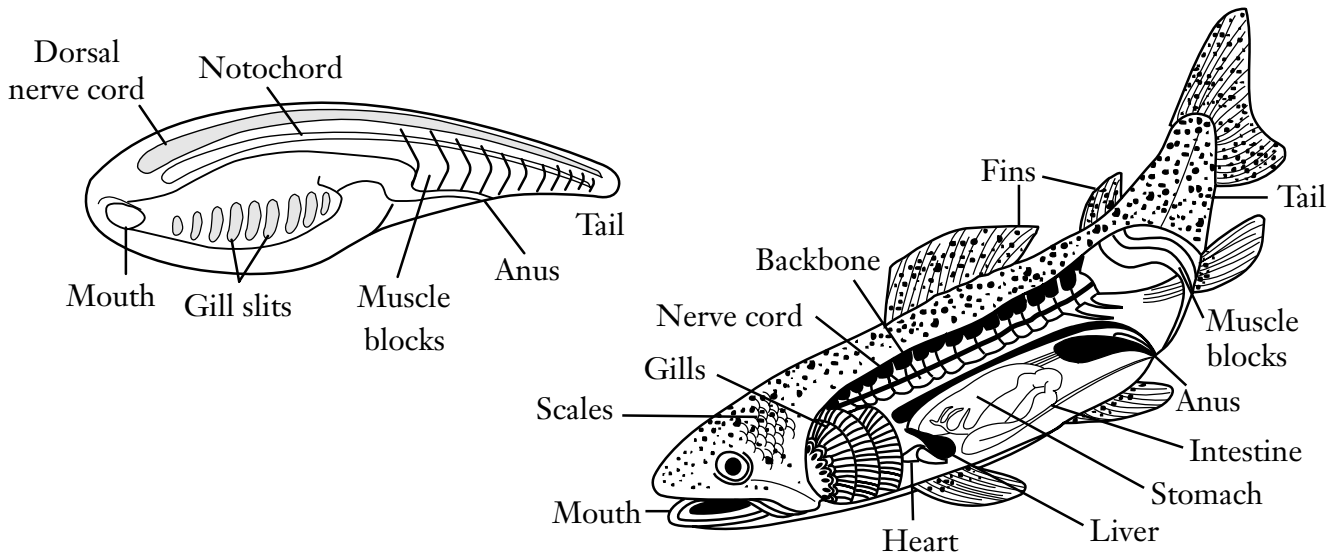


CHAPTER 33 FISHES AND AMPHIBIANS

Get the Big Picture

Study the diagrams. Then answer the questions.



1. What structures do fishes share with invertebrate chordates? _____

2. What structures do fishes have that invertebrate chordates don't have? _____

Read the paragraph in the box. Then answer the question.

Tadpoles are young amphibians. They share many characteristics with fishes. Like fishes, tadpoles have two-chambered hearts, gill slits, and fins. As tadpoles and other amphibians grow, they develop features they need to live on land. These include legs, lungs, three-chambered hearts, and moist skin.

3. Name four characteristics that adapt amphibians for living on land. _____
