

**Chapter**  
**28**
**Arthropods, continued**
**Reinforcement and Study Guide**
**Section 28.2 Diversity of Arthropods**

*In your textbook, read about arachnids.*

**Circle the letter of the response that best completes the statement.**

- An animal that is *not* a member of the class Arachnida is
  - a spider.
  - a deer tick.
  - a walking stick.
  - a dust mite.
- In spiders, chelicerae are highly modified appendages that are adapted for
  - holding food and injecting poison.
  - spinning silk and weaving webs.
  - chewing food.
  - mating and reproduction.
- The appendages of a spider that function as sense organs are
  - its chelicerae.
  - its pedipalps.
  - its legs.
  - its spinnerets.
- After catching their prey and injecting it with poison, spiders
  - eat the prey whole.
  - lay their eggs in the prey.
  - chew the prey into small pieces.
  - suck up the prey's contents, which have been liquified with enzymes.
- In ticks and mites, the head, thorax, and abdomen
  - are absent.
  - are well-defined.
  - are fused into one section.
  - are all the same size.
- The fact that horseshoe crabs have remained relatively unchanged for 500 million years indicates that
  - natural selection has not taken place.
  - they must reproduce by parthenogenesis.
  - they have very little genetic diversity.
  - their environment has changed very little.

*In your textbook, read about crustaceans, centipedes, and millipedes.*

**Determine if each statement is true or false.**

- \_\_\_\_\_ **7.** Having compound eyes on movable stalks is an advantage for aquatic crustaceans whose potential predators could attack from almost any direction.
- \_\_\_\_\_ **8.** The legs of most crustaceans are unspecialized and used only for walking.
- \_\_\_\_\_ **9.** You might be more likely to see pill bugs moving around out in the open on a rainy day than on a sunny one.
- \_\_\_\_\_ **10.** Both centipedes and millipedes have book lungs for gas exchange.

**Chapter 28**

**Arthropods, *continued***

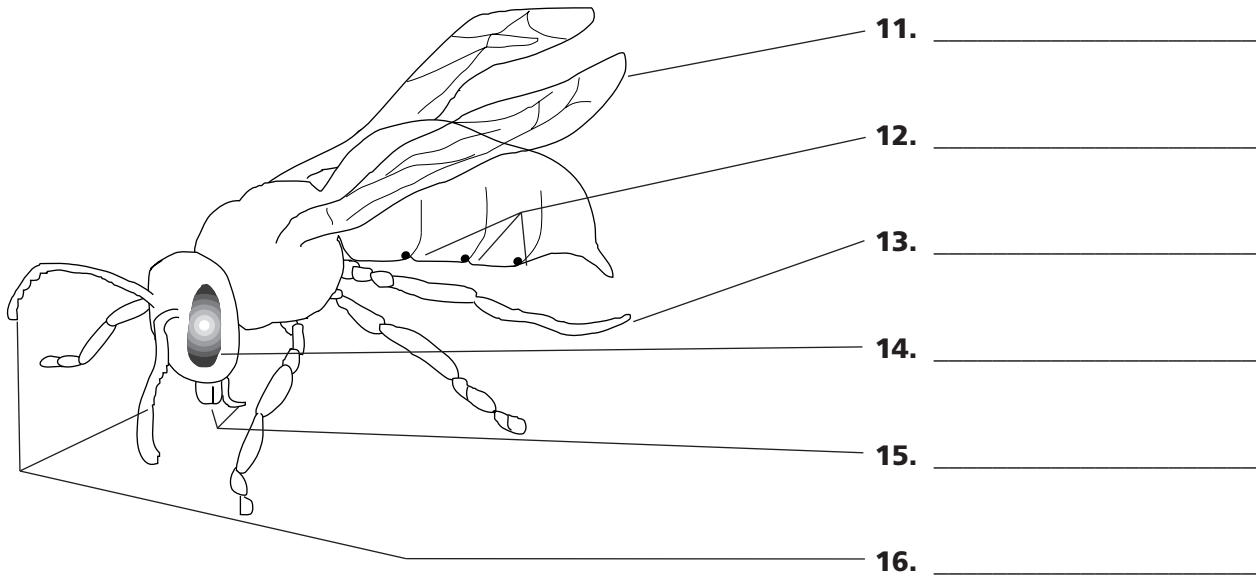
**Reinforcement and Study Guide**

**Section 28.2 Diversity of Arthropods, *continued***

*In your textbook, read about insects.*

Using the choices below, label the diagram of a honeybee.

- antennae      compound eye      legs      mandibles      spiracles      wings



Complete the table by checking the correct column for each statement.

| Description   | Type of Metamorphosis |            |
|---|-----------------------|------------|
|   | Complete              | Incomplete |
| 17. Insect begins life as a fertilized egg.         |                       |            |
| 18. Larva hatches from an egg.                      |                       |            |
| 19. Nymph repeatedly molts and increases in size.   |                       |            |
| 20. Nymph hatches from an egg.                      |                       |            |
| 21. Pupa undergoes changes while encased in cocoon. |                       |            |
| 22. Adults and young usually eat the same food.     |                       |            |
| 23. Adults are the only sexually mature form.       |                       |            |