

Chapter
32
Mammals, continued
Reinforcement and Study Guide
Section 32.2 Diversity of Mammals

In your textbook, read about placental mammals, mammals with a pouch, and egg-laying mammals.

Answer the following questions.

- 1.** What is a placental mammal?

- 2.** What is the relationship between body size and gestation period in placental mammals?

- 3.** Why are most marsupials found only in and around Australia?

- 4.** What characteristic sets monotremes apart from all other mammals?

Complete the table by checking the correct column(s) for each characteristic.

Characteristic	Type of Mammal		
	Placental	Marsupial	Monotreme
5. Give birth to young			
6. Young nourished by a placenta during the entire development period			
7. Have a permanent pouch on abdomen			
8. Produce milk in mammary glands			
9. Lay eggs			
10. Include echidnas and duck-billed platypuses			
11. Have hair			
12. Comprise about 95 percent of all mammals			
13. Exhibit parental care			

Chapter
32
Mammals, continued
Reinforcement and Study Guide
Section 32.2 Diversity of Mammals, continued

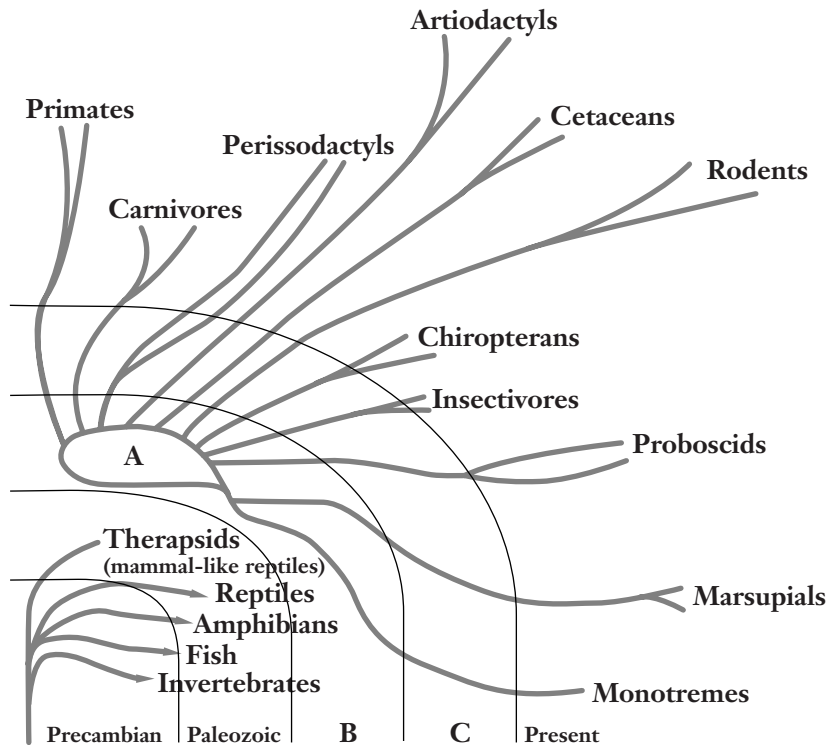
In your textbook, read about the origins of mammals.

Use each of the terms below just once to complete the passage.

Cenozoic **climate** **dinosaurs** **insect-eating**
mammals **Pangaea** **reptiles** **therapsids**

Roughly 200 million years ago, the first **(14)** _____ began roaming the earth. Most were small **(15)** _____ descendants of **(16)** _____, animals that had characteristics in common with both mammals and **(17)** _____. The breakup of **(18)** _____, the sudden disappearance of the **(19)** _____, and a changing **(20)** _____ provided early mammals with new food sources and habitats. During the **(21)** _____ era, mammals diversified greatly into the many species inhabiting Earth today.

Examine the phylogenetic tree below. Then answer the questions that follow.



- 22.** What group of animals is represented by the letter A above? _____
- 23.** What era is represented by the letter B? _____
- 24.** What era is represented by the letter C? _____