

**Chapter
37**
**Respiration, Circulation,
and Excretion, *continued***
Reinforcement and Study Guide
Section 37.2 The Circulatory System

In your textbook, read about your blood, ABO blood types, and blood vessels.

Answer the following questions.

1. What cells and substances would you expect to find suspended or dissolved in plasma?

2. How is carbon dioxide transported in blood?

Complete the table below by checking the correct column for each description.

Description	Red Blood Cells	White Blood Cells	Platelets
3. Contain hemoglobin			
4. Fight infection			
5. Lack a nucleus			
6. Help clot blood			
7. Transport oxygen			
8. Comparatively large and nucleated			

For each statement below, write true or false.

- _____ 9. Your blood type can be changed with a blood transfusion.
- _____ 10. Different blood types result from different antibodies being present on the membranes of red blood cells.
- _____ 11. If you have type B blood, then you have anti-A antibodies in your plasma.
- _____ 12. Risks involving incompatible Rh factors are greatest for a woman's first child.

**Chapter
37**
**Respiration, Circulation,
and Excretion, *continued***
Reinforcement and Study Guide
**Section 37.2 The Circulatory System,
*continued***

In your textbook, read about your heart, blood's path through the heart, and inside your heart.

Label the parts of the human heart in the diagram below. Use these choices:

aorta

left atrium

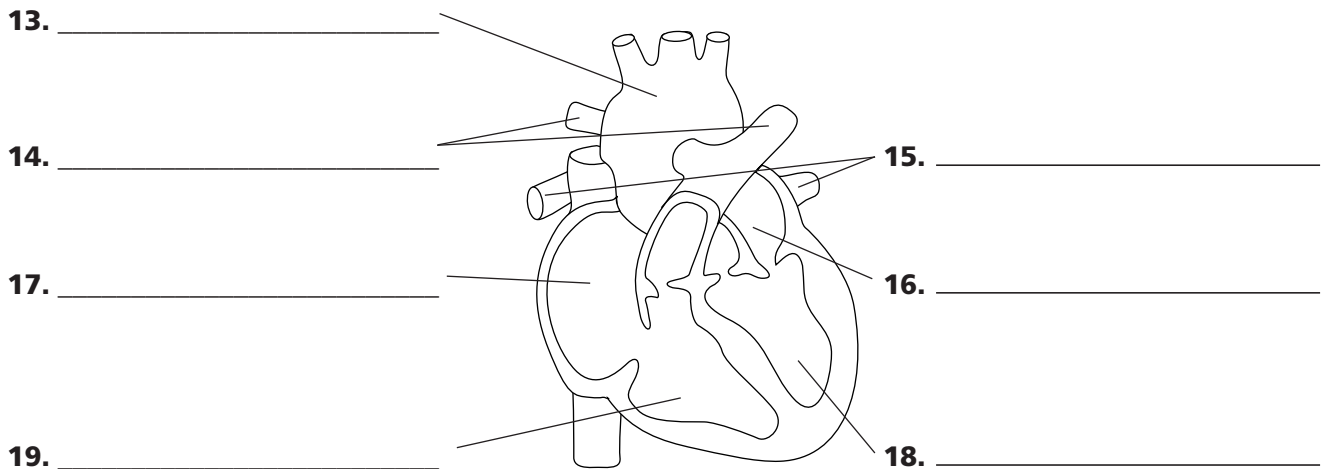
left ventricle

pulmonary arteries

pulmonary veins

right atrium

right ventricle



20. Where does blood go from the pulmonary veins? From the right ventricle? From the left ventricle?

21. What prevents blood from mixing between atria and ventricles?

In your textbook, read about heartbeat regulation, control of the heart, and blood pressure.

Determine if the statement is true. If it is not, rewrite the italicized part to make it true.

22. The surge of blood through an artery is called the *cardiac output*. _____

23. The pacemaker initiates heartbeats *by generating electrical impulses*. _____

24. An electrocardiogram is a record of *the strength of each heartbeat*. _____

25. The *atrioventricular node*, along with sensory cells in arteries near the heart, regulates the pacemaker.

26. *Diastolic pressure* occurs when the heart's ventricles contract. _____