

**Chapter 7**

Use with Section 1

**REINFORCEMENT****● Mechanisms of Evolution****Adaptations**

The traits of an individual of a species that are better for survival and reproduction are adaptations. If an organism is not well adapted to its environment, it may die. If it is well adapted to its environment, its chances of survival and reproduction are improved.

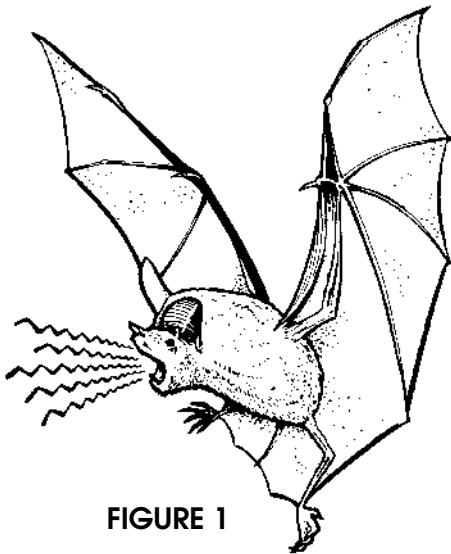
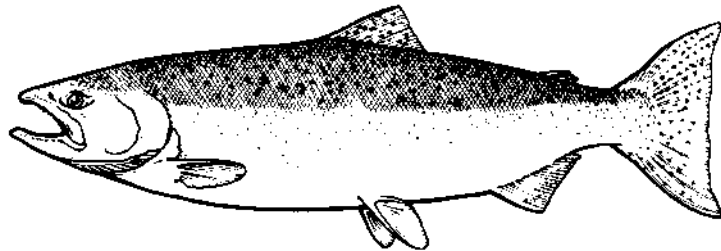
**A. Bat Adaptations**

Bats usually feed by catching insects at night. Bats locate insects by giving off high-frequency sounds as they fly. These sounds bounce off insects and return to the bat. List three adaptations shown in FIGURE 1 that aid the bat in catching food.

Adaptation 1 \_\_\_\_\_

Adaptation 2 \_\_\_\_\_

Adaptation 3 \_\_\_\_\_

**FIGURE 1****FIGURE 2****B. Fish Adaptations**

Fish have a number of predators. Birds such as pelicans or gulls feed on fish. Large fish often feed on other smaller fish. List two adaptations shown in FIGURE 2 that aid the fish in avoiding predators (note coloration).

Adaptation 1 \_\_\_\_\_

Adaptation 2 \_\_\_\_\_