

Chapter 18

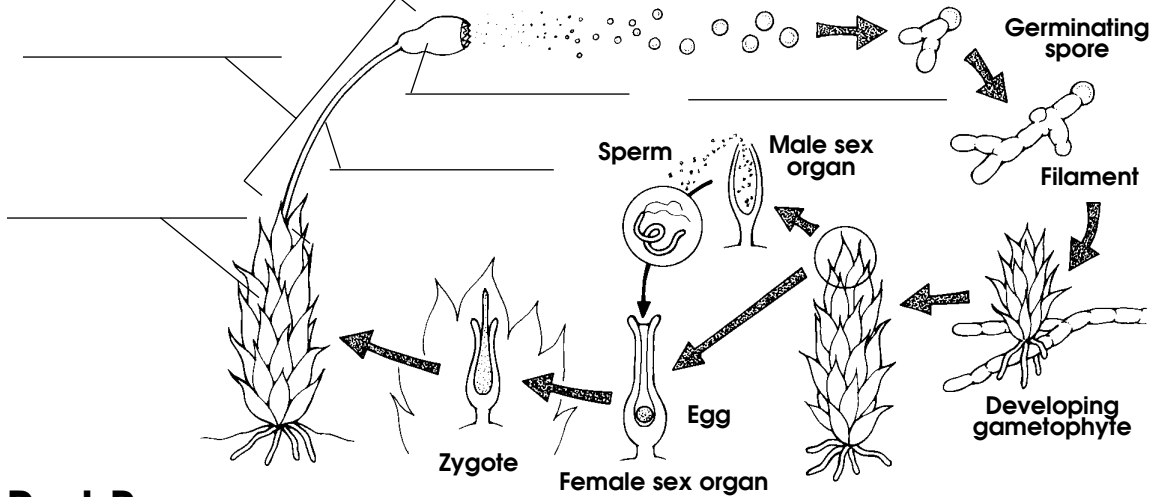
REINFORCEMENT

Use with Section 1

# Introduction to Plant Reproduction

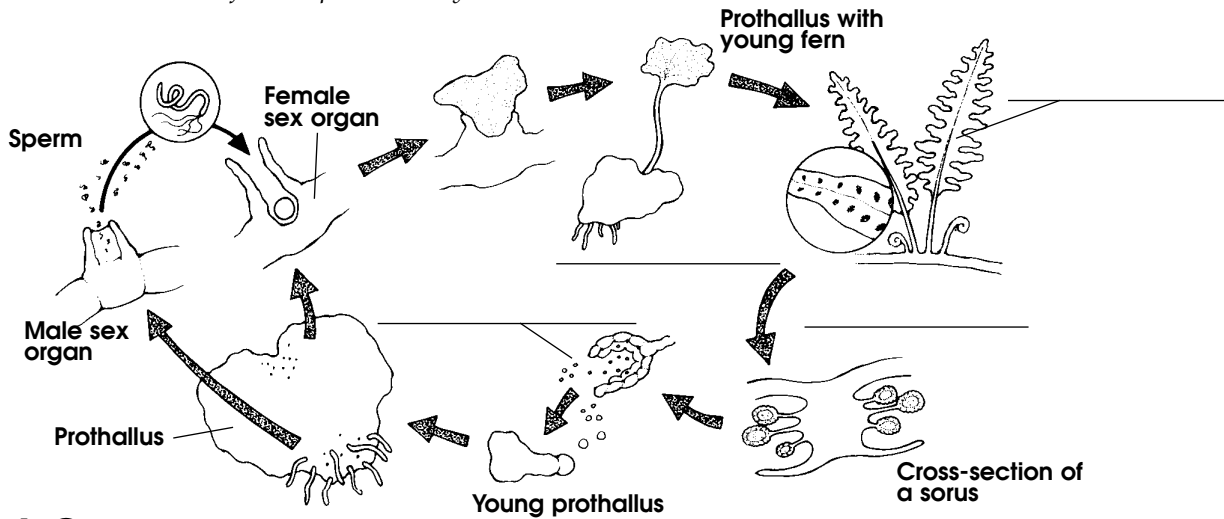
## Part A

Label the structures in the moss's reproductive cycle.



## Part B

Label the structures in the fern's reproductive cycle.



## Part C

Answer the following questions.

1. Describe what is meant by alternation of generations.

---



---



---

2. Describe the difference between the haploid and diploid stages.

---



---



---