

**Chapter 24**

Use with Section 2

**REINFORCEMENT**

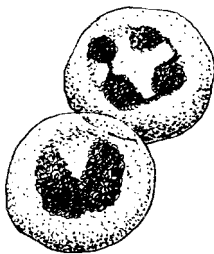
**● Blood**

Fill in the missing words to describe the four functions of blood.

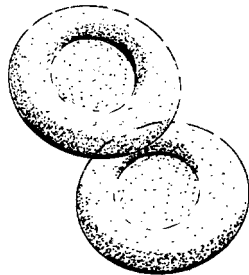
1. carries body \_\_\_\_\_ to and removes \_\_\_\_\_ from all body cells
2. carries \_\_\_\_\_ of cell activity to \_\_\_\_\_ to be removed
3. transports \_\_\_\_\_ from the digestive system to all cells
4. carries materials that fight \_\_\_\_\_ and heal wounds

The parts of human blood are shown below. Write what each part does on the line below its picture: help clot blood; transport oxygen; contains nutrients and minerals; help fight infection.

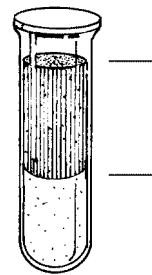
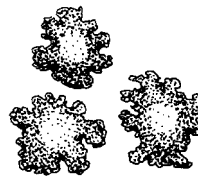
White blood cells



Red blood cells



Platelets



Plasma

5. \_\_\_\_\_ 6. \_\_\_\_\_ 7. \_\_\_\_\_ 8. \_\_\_\_\_

Complete the following table. Possible blood types of the donor are listed horizontally. The possible blood types of the receiver are listed vertically. Make a check in the box if the receiver can receive blood from the donor directly above. Then answer the questions below the table.

		Donor (can give blood to)			
		O	A	B	AB
Receiver (can receive blood from)	O				
	A				
	B				
	AB				

9. Who can receive any type blood? \_\_\_\_\_
10. Who can receive only type O blood? \_\_\_\_\_