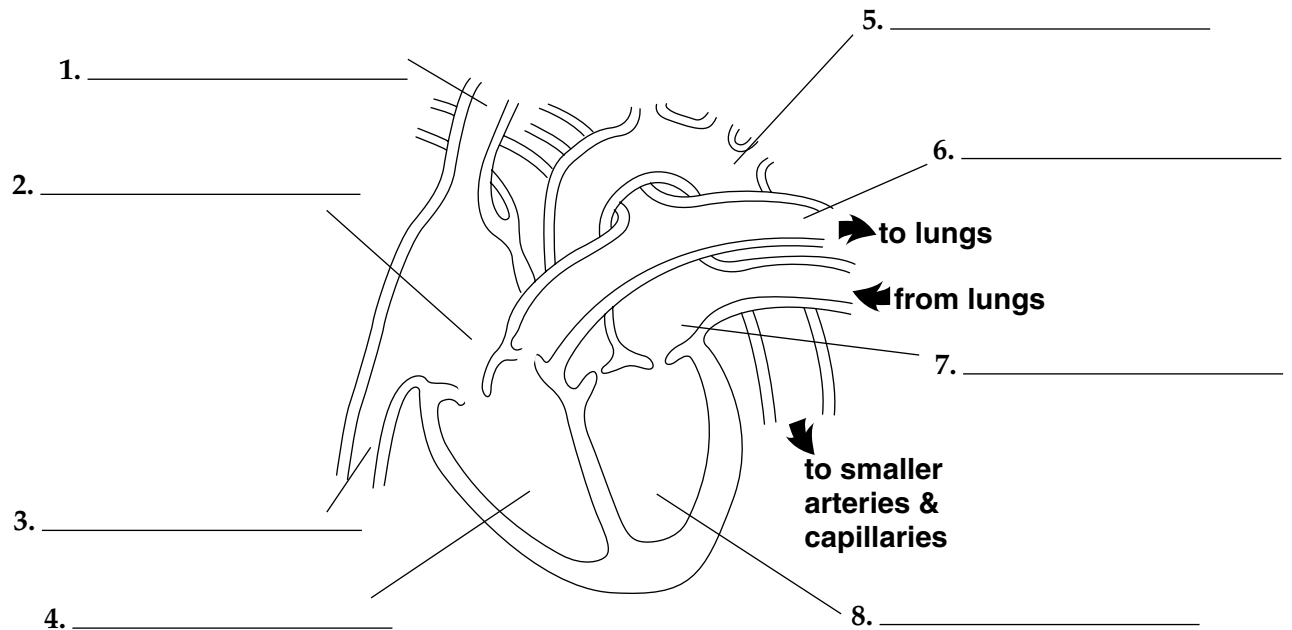


Chapter 7

Use with Section 1

REINFORCEMENT**● Circulation**

Label the diagram of the heart. Include the following terms on your diagram: right atrium, left atrium, right ventricle, left ventricle, superior vena cava, inferior vena cava, pulmonary artery, aorta. Use a pencil to draw arrows showing the path of oxygen-rich blood. Use a pen to show the path of oxygen-poor blood.



Fill in the blanks with the correct terms for questions 1–4.

1. The _____ is the only vein in the body that carries oxygen-rich blood. This vein moves blood from the _____ to the _____.
2. Valves inside the veins prevent blood from flowing _____ the heart.
3. Blood in _____ carries wastes away from the cells of the body back to the heart.
4. A measure of the flow of blood in arteries is called _____.
5. What is pulmonary circulation and what is its function? _____
