

# CHAPTER REVIEW

# Chapter 16

## Changing Ecosystems

### I. Vocabulary Review

Match each item in Column I with the most appropriate item in Column II. Write the letter for that item in the blank at the left.

Column I	Column II
_____ 1. the process of one community slowly being replaced by another	a. diversity
_____ 2. the presence of many different species within a community	b. succession
_____ 3. a close association between two or more species	c. climax community
_____ 4. a relationship between two or more species in which both species benefit	d. symbiosis
_____ 5. an ecosystem in balance	e. mutualism

### II. Concept Review

If the underscored word or phrase makes the sentence true, write "TRUE" in the space provided. If the underscored word or phrase makes the sentence false, write the correct term or phrase in the space provided.

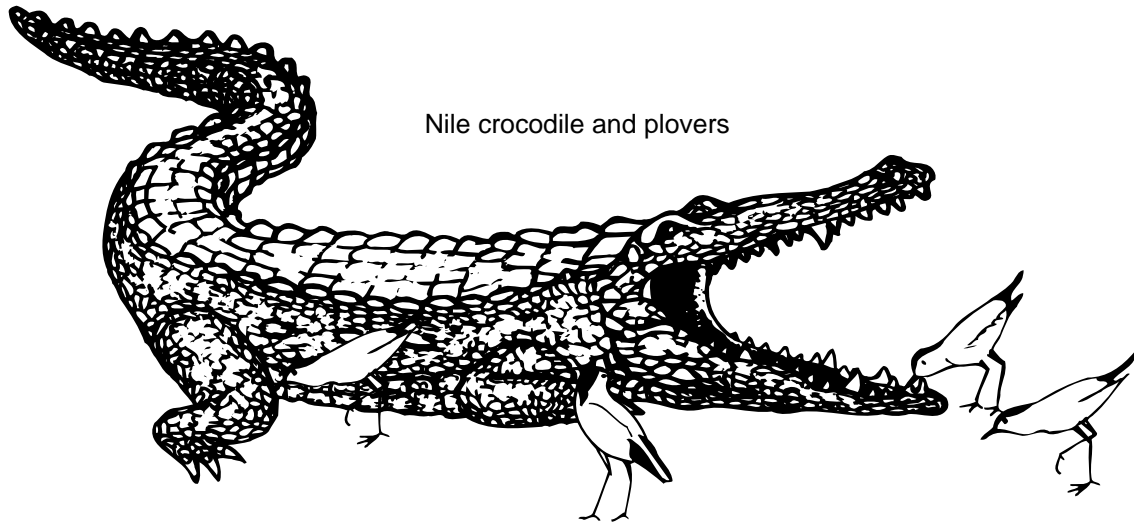
- \_\_\_\_\_ 6. Succession is one way that ecosystems recover from damage.
- \_\_\_\_\_ 7. Succession usually involves a decrease in the number of species.
- \_\_\_\_\_ 8. Succession can take place only if there is ecosystem diversity.
- \_\_\_\_\_ 9. Succession in a rain forest is very rapid.
- \_\_\_\_\_ 10. Lichens are often a pioneer species.
- \_\_\_\_\_ 11. Only plants are part of food chains.
- \_\_\_\_\_ 12. The African honey guide bird and the honey badger are an example of a parasitic relationship.
- \_\_\_\_\_ 13. The relationship between vultures and lions is mutualism.
- \_\_\_\_\_ 14. Most extinctions today are due to human-caused destruction of ozone.

Answer the following question in phrases or complete sentences.

15. Compare and contrast local and global extinction. \_\_\_\_\_
- \_\_\_\_\_
- \_\_\_\_\_
- \_\_\_\_\_

## Chapter Review 16 (continued)

### III. Skills/Process Review



**FIGURE 1**

Plovers pick meat, insects, and leeches from the teeth and skin of a crocodile.

*Answer the following questions in phrases or complete sentences.*

- 16.** Characterize the symbiotic relationship shared by the two species shown in Figure 1.  
\_\_\_\_\_
- 17.** Name two other animal species with a symbiotic relationship similar to that of the species shown in Figure 1. \_\_\_\_\_
- 18.** If the crocodile in Figure 1 ate the plovers, what would be the relationship between the two species? \_\_\_\_\_
- 19.** What benefit does the crocodile gain from the relationship shown in Figure 1? \_\_\_\_\_  
\_\_\_\_\_

### IV. EYV Review

- 20. Science and Society: Why All the Fuss Over the Rain Forest?** Respond to the following statement from the feature: “The rain forests we preserve may hold the key to our own future!”

\_\_\_\_\_  
\_\_\_\_\_  
\_\_\_\_\_  
\_\_\_\_\_