

Chapter 20

Use with Section 2

REINFORCEMENT

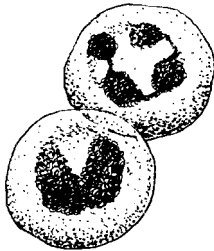
● Blood

Fill in the missing words to describe the four functions of blood.

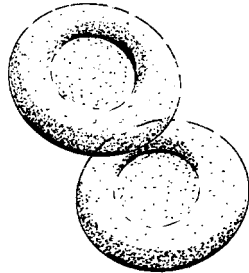
1. carries body _____ to and removes _____ from all body cells
2. carries _____ of cell activity to _____ to be removed
3. transports _____ from the digestive system to all cells
4. carries materials that fight _____ and heal wounds

The parts of human blood are shown below. Write what each part does on the line below its picture: help clot blood; transport oxygen; contains nutrients and minerals; help fight infection.

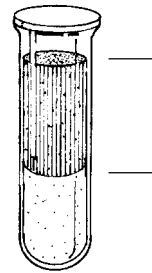
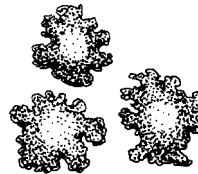
White blood cells



Red blood cells



Platelets



Plasma

5. _____ 6. _____ 7. _____ 8. _____

Complete the following table. Possible blood types of the donor are listed horizontally. The possible blood types of the receiver are listed vertically. Make a check in the box if the receiver can receive blood from the donor directly above. Then answer the questions below the table.

		Donor (can give blood to)			
		Blood Type	O	A	B
Receiver (can receive blood from)	O				
	A				
	B				
	AB				

9. Who can receive any type blood? _____
10. Who can receive only type O blood? _____