

Chapter 8

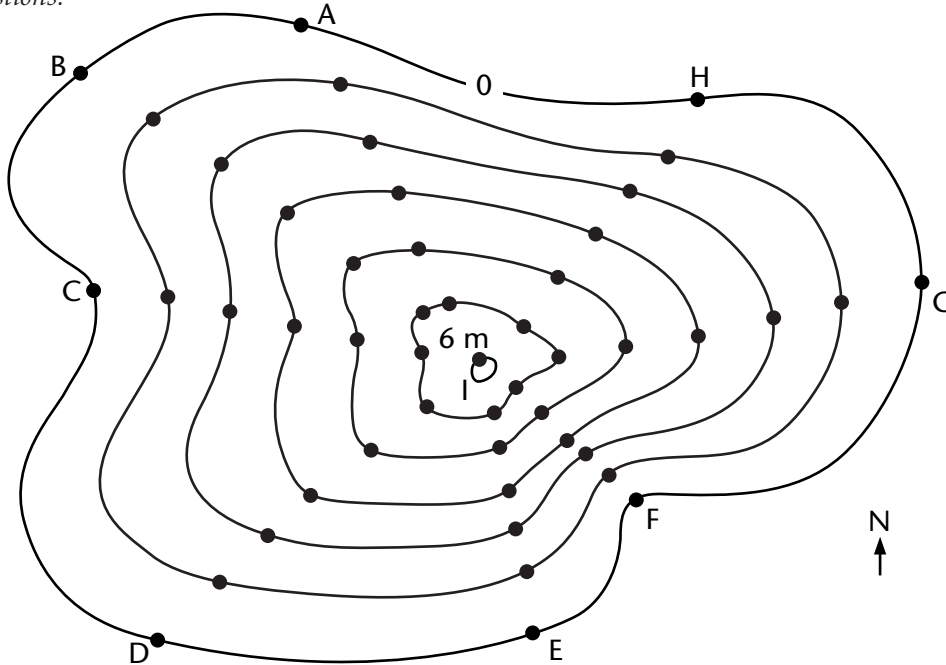
Use with Section 3

ENRICHMENT

● Maps

Creating a Topographic Map

The map below represents an island off the eastern coast of the United States. The contour lines on the map show sea level and the highest point on the island. Construct additional contour lines according to the following steps, then answer the questions.



- A. Divide the distance from point A to point I, the highest point of elevation, into 6 equal distances. One section equals a 1-meter interval. Place a dot at each division.
 - B. Continue Step A for points B–H.
 - C. Connect the dots for each contour line, following the shape of the coastline.
1. Between which point on the coast and point I is the slope the most gentle? What evidence supports your conclusion? _____

 2. Do you see any evidence that a stream flows from point I to any point along the coast? Explain your answer. _____

