



ExamView[®]

Assessment Suite 5.1

Windows Version

including the
Test Generator, Test Manager,
& Test Player

Copyright © 1999-2006
by FSCreations, Inc.
Cincinnati, Ohio

ALL RIGHTS RESERVED

The text of this publication, or any part thereof, may not be reproduced or transmitted in any form or by any means, electronic or mechanical, including photocopying, recording, or otherwise, without prior written permission of the publisher.

ExamView is a registered trademark of FSCreations, Inc.
MindPoint is a registered trademark of FSCreations, Inc.
Apperson is a trademark of Apperson Education Products
EZData is a registered trademark of NCS Pearson
Windows is a registered trademark of Microsoft Corporation
Apple and Macintosh are registered trademarks of Apple Computer, Inc.

CONTENTS

INTRODUCTION.....	1
System Requirements.....	2
Installation Instructions.....	3
Getting Started.....	4
CREATE A TEST	6
Use the QuickTest Wizard.....	6
Build a New Test.....	7
Customize the Appearance of a Test.....	9
Print a Paper Test.....	11
Print a Bubble Form.....	12
Publish an Online Test.....	13
ENTER YOUR OWN QUESTIONS.....	14
Question Bank Basics.....	14
A Hands-On Tutorial.....	17
Copy and Paste Questions.....	25
Import Questions from a Word Processor.....	25
WORKING WITH CLASSES AND ASSIGNMENTS	26
Create a New Class.....	26
Enter Student Names and IDs Manually.....	27
Import a Student Roster.....	28
Export a Student Roster.....	29
Create an Assignment.....	30
SCORE PAPER TESTS WITH A SCANNER.....	32
Using Bubble Forms for Scanning.....	33
Dedicated OMR Scanning.....	34
Plain Paper Scanning.....	37
SCORE PAPER TESTS WITH RESPONSE DEVICES.....	39
Assigning Response Device IDs.....	39
Get Results from Response Devices.....	41

ADMINISTER ONLINE TESTS ON YOUR LOCAL AREA NETWORK (LAN)	43
Before You Begin	43
Create an Online (LAN) Test without a Roster	44
Create an Online (LAN) Test with a Roster	46
Take a Test with the Test Player	50
Get Results from a LAN Test	52
PUBLISH A TEST TO THE LEARNING & TEST CENTER	53
Register for the Learning & Test Center	53
Publish a Test or Assignment	54
Access the ExamView Instructor Center	56
Complete a Test/Assignment via the Internet	57
Get Results from an Internet Test/Assignment	58
PREPARE REPORTS FOR PAPER AND ONLINE TESTS	59
Class Reports	59
Student Reports	68
Print a Report	73
Export Results to a Gradebook or Another Application	73
PUBLISH AN INTERNET (HTML) TEST TO YOUR OWN WEBSITE	74
Publish an Internet (HTML) Test	74
Take an Internet (HTML) Test	76
EXPORT TESTS TO WEBCT AND BLACKBOARD	77
APPENDIX	78

INTRODUCTION

The ExamView® Assessment Suite 5.1 (including the Test Generator, Test Manager, and Test Player) is a comprehensive solution for creating, administering, and scoring tests. With the new version, it is easier than ever to prepare paper and online tests. The software includes many features to save you time and generate information to assess and improve student performance.

Use the ExamView Test Generator to...

- Create a paper test in less than five minutes.
- Print multiple versions of the same test.
- Enter your own questions.
- Prepare an online test, study guide, and worksheet.
- Upload tests to WebCT and Blackboard.

Use the ExamView Test Manager to...

- Create a class roster.
- Automatically score a paper test using a scanner.
- Automatically score an assignment using response devices.*
- Administer and score an online test.
- Prepare a variety of useful class and student reports.

*Professional Edition only

Our mission is to enhance the learning process by providing superior products for students and educators. We believe that the ExamView Assessment Suite can truly enhance your classroom experience.

One of the reasons our software is so widely used in classrooms is that we include educators and students in the design process. We invite you to share your experiences and feedback with us so we can make our products even better. Please email your comments to support@fscreations.com.

To learn more about our products, visit our website at www.fscreations.com.

System Requirements

To use the **ExamView Assessment Suite v.5.1**, your computer must meet or exceed the following requirements:

- PC with Pentium II 120 MHz or higher processor
- Microsoft Windows 98 or later operating system
- 32 MB available memory for application (64 MB recommended)
- 24 MB of available hard drive space
- CD-ROM drive (for installation from disc)
- Monitor capable of displaying 16-bit color with 800 x 600 resolution
- Mouse (or another pointing device)
- Internet connection to access the test-hosting features

Note:

- The **ExamView Assessment Suite** includes a separate program called the **ExamView Test Player** that you can use to deliver online tests on your local area network. The system requirements are the same as those shown above except that the application requires a minimum of 16 MB available memory for the application and 8 MB of hard drive space.
- Some **ExamView Assessment Suite** features require hardware devices such as response pads and scanners. These devices may have higher system requirements than those listed here. Check your hardware manufacturer's user guide or website to verify that your system meets these requirements.

Installation Instructions

Follow these steps to install the **ExamView Assessment Suite**. The installer will create an **ExamView** folder and these subfolders: **Banks**, **Tests**, **Scanners**, and **Classes**. If you received the software from a publisher, the installer will automatically copy the publisher-supplied question banks to a new folder within the **Banks** folder.

1. Insert the **ExamView** disc into the CD-ROM drive of your computer.

If the autorun feature is enabled on your computer, a window will automatically appear on your screen. Click the **Install** button and skip to step 5. If the autorun window does not appear, proceed to step 2.

2. Click the **Start** button and choose **Run**.
3. In the Run window, type **d:\setup.exe**, replacing **d** with the drive letter that corresponds to the drive where the setup file is located.
4. Click the **OK** button.
5. Follow the instructions that appear on your screen.

Note: To uninstall the **ExamView** software, choose **Settings - Control Panel** from the **Start** menu. Select **Add or Remove Programs**. Removing the program does not delete any banks or tests. You must manually remove those files.

Getting Started

After you complete the installation process, follow the instructions below to start the software. Start the **ExamView Test Generator** if you want to create a test, open an existing test, create new questions, or work with a question bank. Use the **ExamView Test Manager** to create a new class roster, assign an online test to a class, get results from an online test, score a paper test using a scanner, or print a report.

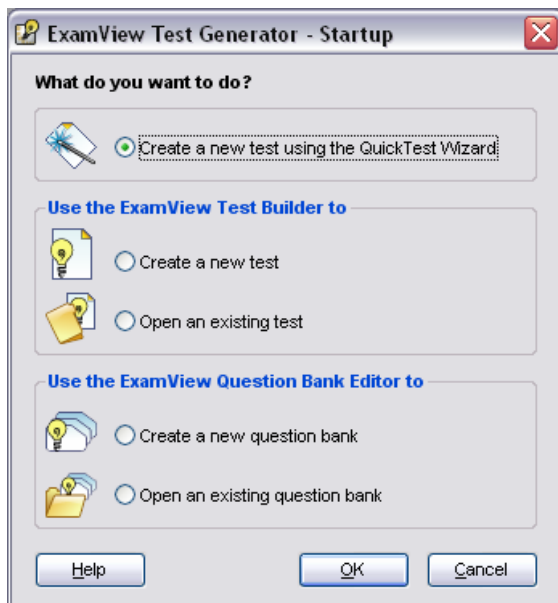


ExamView Test Generator

1. Click the **ExamView Test Generator** shortcut on your desktop. If you do not have a shortcut, click the **Start** button. Highlight the **Programs** menu and locate the **ExamView Pro Test Generator** folder. Select the **ExamView Test Generator** option.
2. The first time you run the software, the program prompts you to enter your name, school/institution name, and city/state. Enter the requested information.
3. Choose one of the options in the **Startup** menu.

*Use the **ExamView Test Generator** to create a test or work with a question bank.*

Each time you run the **ExamView Test Generator** program, the program displays the **Startup** menu. You can choose to create a test using the **Test Builder** or enter your own questions using the **Question Bank Editor**.



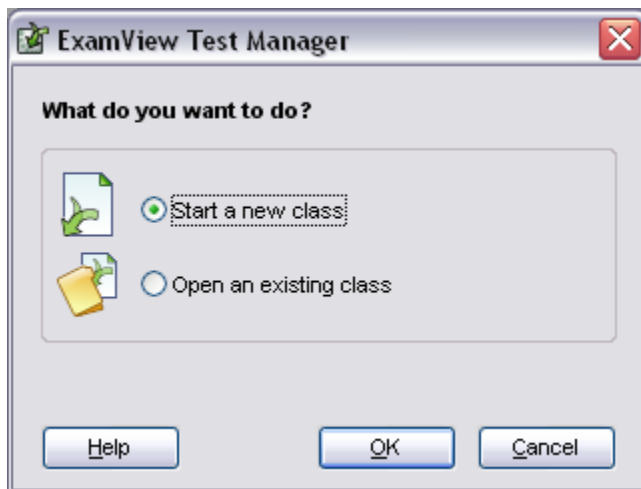


ExamView Test Manager

1. Click the ExamView Test Manager shortcut on your desktop. If you do not have a shortcut, click the **Start** button. Highlight the **Programs** menu and locate the ExamView Pro Test Generator folder.
2. Choose one of the options from the **Startup** menu.

Each time you run the ExamView Test Manager program, the program displays the **Startup** menu. You can choose to start a new class or open an existing class.

*Use the **ExamView Test Manager** to assign an online test, get results, or print reports.*



Help Topics

Detailed help instructions are always available if you need assistance using the ExamView software. Click the **Help** button or choose the **Help Topics** option from the **Help** menu to view step-by-step instructions. If you have trouble while you are working with the software, you may want to review the troubleshooting tips.

CREATE A TEST

The **ExamView Test Generator** program provides all the tools you need to create a paper test or an online test from your own questions or from those provided by a publisher. You can use the **QuickTest Wizard** to select the questions for a test, or you can use one or more of the other question selection options.

After you create or build a test, you can change the instructions, reorder the questions, change the layout, print the test, or publish an online test.


Use the QuickTest Wizard

If you want to create a test quickly with randomly selected questions from one or more question banks, use the QuickTest Wizard. The wizard guides you through the step-by-step process of selecting questions for a new test.

To create a test with the QuickTest Wizard...



1. Launch the **ExamView Test Generator**. A startup window with several options will appear. Choose the **Create a new test using the QuickTest Wizard** option.
2. Name your test.
3. Select the question banks from which you want to choose questions.
4. Identify how many questions of each type you want on your test and click the **Finish** button.

You can also click the  button in the toolbar to start the QuickTest Wizard.

That's all there is to it! If you want, you can customize the appearance of your test using the many formatting options or you can select additional questions.


Build a New Test

The ExamView Test Generator offers several question selection options to create a new test. You can use the QuickTest Wizard or one of the other six options. The option you choose depends on your particular needs. For example, you can select questions by viewing the actual questions and deciding which ones to include on your test. Or, you can select questions by learning objective or standard.

To build a new test...



1. Launch the ExamView Test Generator. A startup window with several options will appear. Choose the Create a new test option.
2. Name your test.
3. Choose one of the question selection options from the Select menu, or click the corresponding toolbar button.

You can also click the  button in the toolbar to create a new test.



Select Randomly - Choose this option if you want to select questions randomly. You can choose how many questions you want for each question type (e.g., multiple choice, true/false, short answer, etc.).



Select from a List - If you have a printout of your question banks, you can manually review the questions and choose the ones you want to include on a test by writing down the question numbers. Then, use this option to select the question numbers from a list.



Select While Viewing - Use this selection method if you want to view the questions and make your selections one at a time while viewing them.



Select by Standard - If your questions include learning objectives, local standards, state standards, or national standards, use this option to easily select questions based on this information.



Select by Criteria - Choose this option to select questions that match criteria you enter. For example, you can select all of the multiple choice questions that cover a certain topic and include specific keywords.

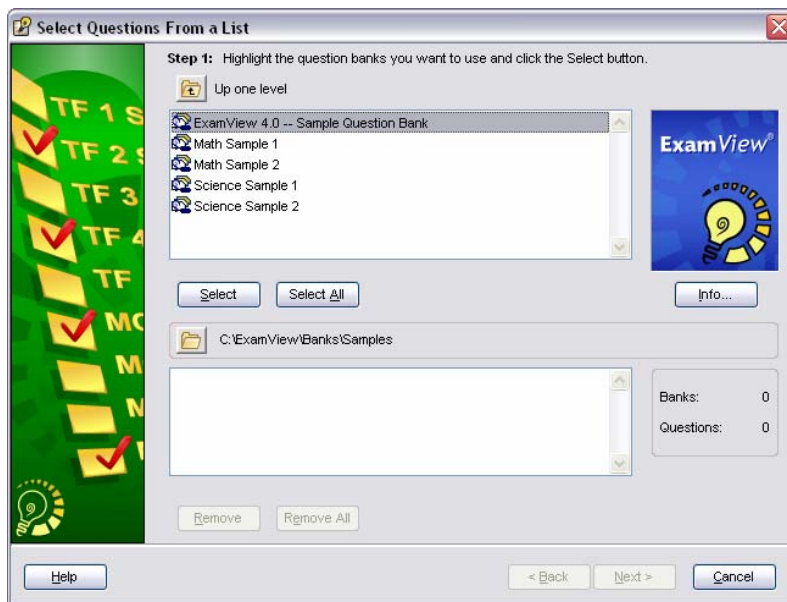


Select All - Choose this option if you want to quickly select all of the questions in a bank or group of banks.

4. After you choose a question selection option, identify which question banks you want to use to create the test.

Highlight one or more question banks and click the **Select** button. The question banks you choose appear in the lower portion of the window. Click the **Next** button to move to the next step.

Note: If the question bank(s) you want does not appear in the list, click the **Folder** button to locate the question bank(s).



5. Use the options provided to select the questions that will appear on your test.

Depending on which question selection option you chose, the **ExamView Test Generator** displays a window with the options you need to build a test.

6. Change the appearance of the test, print the test, or publish it online.
7. Save the test.

*If you need help using any of the selection options, click the **Help** button for detailed instructions.*

Customize the Appearance of a Test

ExamView Test Generator includes numerous features that allow you to customize the appearance of a test to your exact specifications. A few of the more popular options are listed here, but you can refer to the help topic **Customizing the Appearance of a Test** for a complete list.

Answer Space

Depending on how your students will complete the test, you can turn on or off space for answers. For example, if you want your students to write the answers on the test next to each question, you can provide space to do so. If your students will be using a bubble sheet or a separate piece of paper, you can show only the questions. Choose **Layout** from the **Test** menu. Set the corresponding options in the **Leave Answer Space** for area of the layout window.

Reordering Questions

Changing the order of questions is a snap. Just choose **Reorder** from the **Question** menu, and you can drag and drop the questions to your liking. Note, however, that questions must remain grouped by question type. You cannot move a single true/false question to a position after the multiple choice questions. Instead, you must move the entire group of true/false questions.

You can manually reorder or scramble questions. Also, when you print a test, there is an option to scramble the questions.

If you want to scramble the questions, choose **Scramble** from the **Question** menu. From there, you can choose to scramble sections, questions, and the answer choices in multiple choice and multiple response questions.

Replace Font

If you want to change the font of your entire test, choose **Replace Font** from the **Edit** menu. Select the fonts and sizes you want to use, and click the **Replace All** button. All questions in your test will instantly update with the newly selected font choices.

Note: If you use the **Replace Font** option to replace a font, it is best to replace one font (e.g., Times New Roman) with another (e.g., Arial). Do not choose to replace *all fonts* with another font. This could cause unintended results such as replacing symbols or other special characters (e.g., Symbol).

Adjust Multiple Choice

Do you need to alter a multiple choice test for a special-needs student? Choose **Adjust Choices/Columns** from the **Question** menu to adjust your test. You can instantly reduce the number of choices in all of your multiple choice questions.

Layout and Style

Several state and national test styles are built into the ExamView Test Generator. Instantly format your test by choosing a style from the Style Gallery. For example, if you want to format your test to look like the PSAT, choose **Style Gallery** from the Test menu. Select the **PSAT** option and click the **OK** button.

If you do not see a style that suits you in the **Style Gallery**, you can customize the test with the **Layout and Style** commands. Choose **Layout** from the Test menu, and set the layout options. Then click the **Style** tab and choose your fonts and styles. The figure below shows an example of a test with a customized bubble sheet style.

Name: _____	Class: _____	Date: _____	ID: A
-------------	--------------	-------------	-------

Reading 10

Multiple Choice
Identify the letter of the choice that best completes the statement or answers the question.

Read the [Alternative Fuel Vehicles](#) passages, and then answer the following question(s).

1. Read this sentence from the first passage.
One of the biggest advantages of the EV is that it runs clean, without harmful emissions.
What is the best synonym for the word *emissions*?

<input type="radio"/> A accidents	<input type="radio"/> C irritants
<input type="radio"/> B pollutants	<input type="radio"/> D side effects
2. Refer to both passages. Which of the following statements about fuel cell technology is NOT true?


<input type="radio"/> F The fuel cell vehicle is a zero-emission vehicle.
<input type="radio"/> G Fuel cells have been used on spacecraft for many years.
<input type="radio"/> H In fuel cell vehicles, hydrogen is burned directly in the engine, like gasoline.
<input type="radio"/> J The United States, Germany, and Iceland are investing in fuel cell technology.
3. Which adjective best describes the author's point of view in the first passage?

<input type="radio"/> A sincere	<input type="radio"/> C objective
<input type="radio"/> B biased	<input type="radio"/> D persuasive

Print a Paper Test

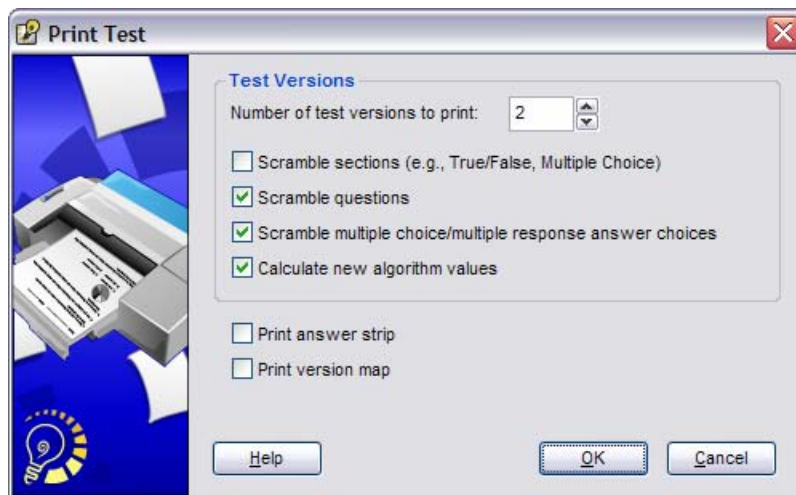
After you create or open a test, you can print a paper test in just a few simple steps. When you choose to print a test, the **ExamView Test Generator** prints the test and the answer key exactly how it appears on screen.

To print a test...

1. Choose **Print Test** from the **File** menu, or click the  toolbar button.
2. Set the print options.

If you choose 2 or more versions of the test, you can choose to scramble the questions using several options. If the test includes dynamic questions, the **ExamView Test Generator** can calculate new values for each test.

As part of the test, you can print an answer strip to make it easier to score paper tests and a version map that identifies how questions align on each version of a test.



Note: To print a bubble answer sheet, select the **Print Bubble Form** option from the **File** menu. Refer to the **Print a Bubble Form** section in this user guide for further details.

3. Click the **OK** button.

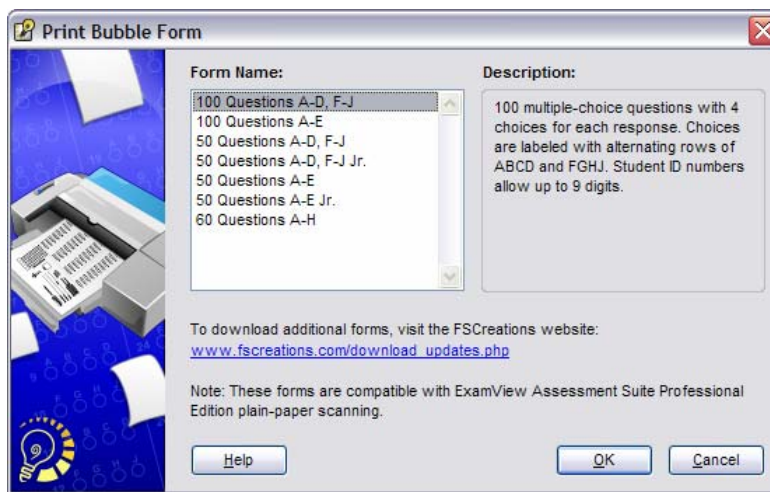
Print a Bubble Form

Using either the ExamView Test Generator or ExamView Test Manager, you can print bubble forms to accompany your test. These forms are compatible with the plain paper scanning feature of the ExamView Assessment Suite Professional Edition. Refer to the Plain Paper Scanning section of the Score Paper Tests with a Scanner topic in this user guide.

To print a bubble form...

1. Choose Print Bubble Form from the File menu.
2. Select the form that best fits your assessment needs.

When highlighted, a description of the selected form will be displayed on the right.



Note: Visit our website (www.fscreations.com) to download additional forms.

3. Click the OK button.

Publish an Online Test

The ExamView Test Generator lets you publish a test in a variety of online formats. Regardless of the online testing option you choose, the steps to build a test are the same as those you use to create a paper test. The online testing options are listed below.

Online testing options...

- Create an online test on your local area network (LAN).
- Publish a test using the **ExamView Learning & Test Center**.
- Save the test as an HTML document that you can post to your own website.
- Export the test for use with your WebCT or Blackboard course management system.
- Publish a test to a third party's website.

The online testing format that you choose depends on your specific needs. Refer to the other sections in this manual for a complete description of the various options. Detailed instructions are available to guide you through the process of publishing an online test.

ENTER YOUR OWN QUESTIONS

When you build a test using the **ExamView Test Generator**, you do so by selecting questions from question banks. A question bank (or bank) is a collection of questions and all of the related items (pictures, equations, learning objectives, standards, etc.) stored in one file. Each question bank may contain up to 250 questions, but you can have an unlimited number of banks. Typically, questions are organized into banks by chapter or lesson.

Using the ExamView Test Generator, you can...

- Enter new questions or edit existing questions.
- Copy and paste questions from another source.
- Import questions from Word or an RTF file (with the EV Import Utility).

IMPORTANT: You can create a new question or edit a question while building a test. However, editing a question after it is included on a test does *not* change the original question in the question bank. You must edit questions or add new ones in a question bank to make those questions available when you build your tests.

Question Bank Basics

If you have not used the **ExamView Test Generator** to create your own questions, there are a few things to consider before you get started. For example, you can include more information than just the question (e.g., answer, learning objective or standard, student feedback, etc.). Take a few moments to review the information presented here before you begin the next section.

You can use a bimodal question as a short answer or a multiple choice question on a test.

Question Types

When you create your own questions, you can include one or more of the following question types.

True/False	Yes/No	Problem
Modified True/False	Numeric Response	Essay
Multiple Choice	Completion	Case
Multiple Response	Matching	Other
Bimodal	Short Answer	

Question Information

Questions can include optional information that is useful when creating a test. For example, you can include learning objectives (or standards) and then select questions based on those objectives. You can also use this information to generate class and student reports. You can enter any or all of the following information with each question.

Difficulty	State Standard	Topic
Reference	Local Standard	Keywords
Learning Objective	Miscellaneous	Notes
National Standard		

*Use the pipe (|) character to enter more than one data element such as a state standard –
MA3-1.2 | MA4-1.*

Student Feedback

If you use the **ExamView Assessment Suite** to deliver online tests, you can include a rationale and student feedback for each objective-based (e.g., multiple choice) question. As a result, you can set up your online tests to display feedback for incorrect responses.

Question

This is a ___ question.

a. True/False c. Numeric Response

b. Multiple Choice d. Completion

Rationale

A multiple choice question includes...

- a question stem and two or more choices
- choices arranged in one, two, or four columns
- choices identified by letters (ABCDE) or numbers (12345)
- up to eight choices

	Feedback
A	True/False questions do not include choices
B	Correct!
C	Numeric response questions require you to enter a number.
D	Completion questions are similar to fill-in-the-blank questions.

Narrative... (None) Answer: b Choices: 4

Record Info... Close Scramble: All Columns: 2

For paper and online tests, you can print a report with the rationale for each item a student answers incorrectly.

Narratives

A **narrative** is a table, a descriptive passage, a special instruction, a picture, or other information that can be attached to (or linked to) one or more questions. All questions linked to the same narrative print together as a group on a test. Possible uses for a narrative include a reading passage, map, chart, or photo.

Images

You can easily insert an image (e.g., graph, map, photo, etc.) into a question or an answer. Or, you can copy and paste an image from another program. Whichever option you use, be sure to consider the size and readability of the image.

Color images and photos can use a lot of memory that, in turn, increase the size of the test or question bank file. For example, a single color photo can be 1-2 MB. For paper tests, the size of an image is not that critical. However, the image size does affect online tests. Imagine students downloading a test via the Internet that includes three or four photos. If you use color images, use the lowest possible resolution.

You can edit a question and double-click an image to see how much space it requires. You can also reduce the color setting of the image.

If you plan to include an image in a question, you should check the image for readability. Can you read the information on your screen and on paper? If you create your own art, use a larger font for text that appears as part of an image. For best results and smaller file sizes, use black and white or 256-color images.

Other Issues

If you create your own questions or edit existing questions, consider these additional guidelines.

When you create your own questions...

- Do not write questions that refer to another question or depend on a particular question order. Remember that you can scramble questions on a test. And, if you randomly choose questions, you may not get all of the questions you need.
- Use tables, not tabs, if you need to create tabular material. Tables work much better, especially for online tests.
- Use standard fonts (e.g., Times New Roman, Arial, etc.). If you use other fonts, you may have difficulty sharing the question banks with someone who does not have the fonts you used. This can be a problem for online tests too.
- For multiple choice and multiple response questions, be sure to set the scramble options for questions that include choices such as *All of the above* or *None of the above*. You would not want one of these choices to appear as choice *a* or *b*.
- Do not worry about entering the instructions for the questions. **ExamView Test Generator** automatically includes the instructions when you create a test.

A Hands-On Tutorial

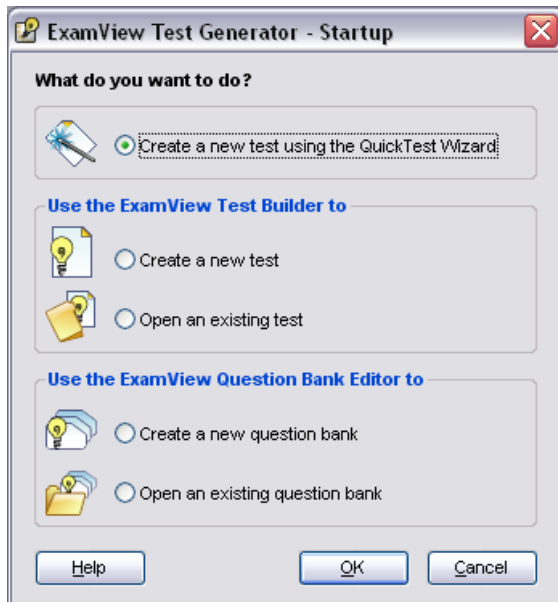
This section provides a tutorial that will guide you step-by-step through the entire process to create a question bank using the **ExamView Test Generator**. You will learn how to create a variety of question types, save the bank, use a narrative, insert art, enter question information, and print a question bank.



Create a New Question Bank

1. Start the **ExamView Test Generator** program.
2. Choose **Create a new question bank** from the **Startup** menu.

If you are currently working in the test builder, choose **Switch to Question Bank Editor** from the **File** menu and then select the option to create a new bank.



3. Name the question bank **ExamView Sample Bank** and click the **OK** button.

An empty question bank page (except for the title) appears on your screen. If you want to edit the title, simply double-click it and change the title.

Enter True/False Questions

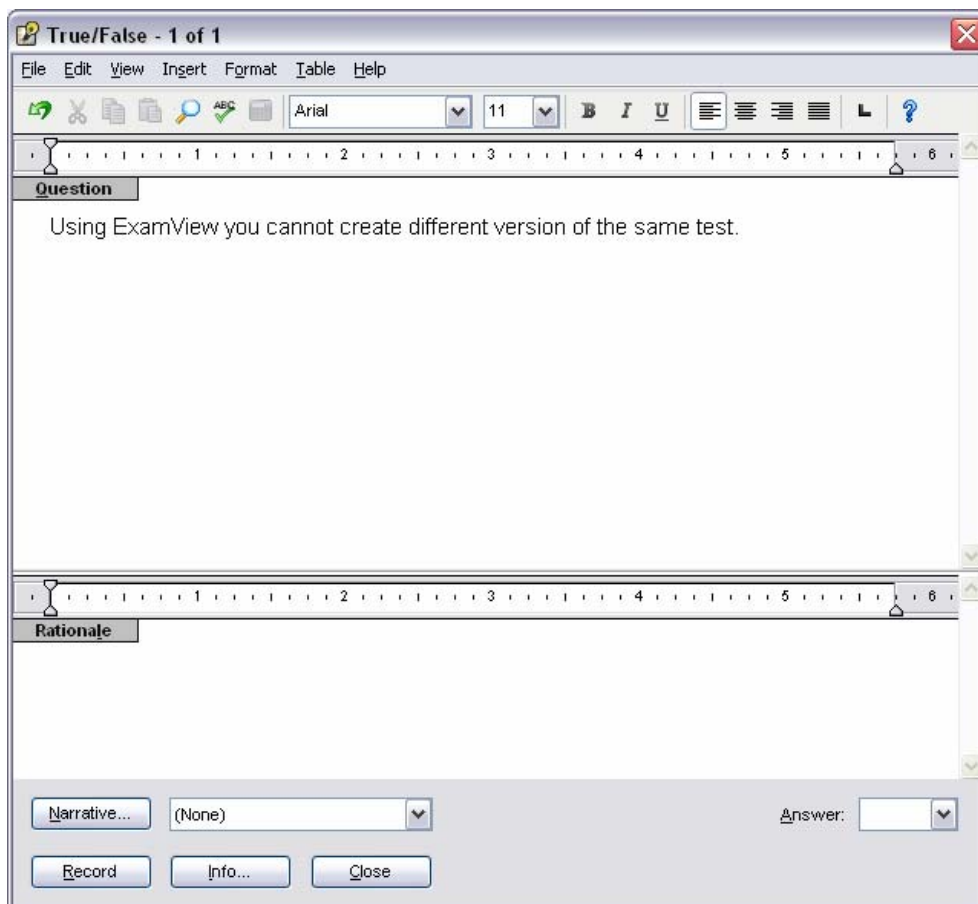
1. Click the **New** button at the bottom of the window.
2. Choose **True/False** and click the **OK** button.

The question entry screen for a true/false question will appear. Depending on the question type, the entry screen provides different options. For example, the multiple choice screen includes space to enter each choice.

3. Type the following question in the question entry area.

Using ExamView you cannot create different versions of the same test.

4. Use the pop-up answer box in the lower right corner of the window to set the answer to **False**.



5. Click the **Info** button at the bottom of the window.
6. Type **Easy** for the difficulty, **221-223** for the reference, and click the **OK** button.
7. Click the **Record** button.

You should see the question you just entered on the question bank page. If you do not see the question information immediately after the question, choose **Preferences** from the **Edit** menu. Click the **Layout** tab and select the options to show difficulty and reference.

By default, all questions are assigned a value of 1 point. You can change the points in the Question Info window.

8. Proofread the question. If you need to make any changes, double-click the question. Or, highlight it and click the **Edit** button at the bottom of the window.
9. Create two more true/false questions using the following information.

ExamView gives you almost complete control over the appearance of a test so that you can customize it to meet your testing requirements.

ANS: T DIF: Easy REF: 245

Stylized text, fonts, and special characters cannot be used in a test question.

ANS: F DIF: Challenging REF: 237

Save the Question Bank

1. Proofread your work and make any changes as needed.
2. Choose **Save** from the **File** menu.
3. Enter a question bank file name, and select a location where you want to save the file.
4. Quit the program, or continue with the next part of this tutorial.

Be sure to save your question bank on a regular basis. From time to time, make a backup of your files.

Create Multiple Choice Questions with a Narrative

1. If necessary, start the program and choose to open the question bank for this tutorial.
2. Click the **New** button, and choose to create a multiple choice question.
3. Enter the following question, answer, and question information.

*You can also press **Ctrl+N** to create a new question. Or, choose **New** from the **Question** menu.*

Based on Table 1-1, ExamView 5 includes which feature?

- a. QuickTest Wizard
- b. Internet Test-Hosting
- c. Select by Standard
- d. All of the above

ANS: D DIF: Average REF: 242-245

4. Set the answer to **d**.
5. Choose **a-c** in the Scramble box to scramble choices *a-c* only when you create a test, and set **1** for the columns.
6. Click the **Narrative** button, click **New**, and enter the following narrative.

Use the **Table** menu to insert a table. If you have time, format the table as shown below. Center the information in the last two columns, shade the first row, and make the column labels bold.

	ExamView 4.0	ExamView 5.0
QuickTest Wizard	Yes	Yes
Multiple Response	No	Yes
Internet Test-Hosting	Yes	Yes
Spell Check	Yes	Yes
Select by Standard	No	Yes

Table 1-1

7. Enter **EV Table 1-1** for the narrative name and click the **Record** button.
8. Click the **Done** button to return to the question entry window.

It is important to use a unique name for each narrative you create.

9. Record the question.

When you record the question, both the question and the narrative appear together.

10. Enter the following question, answer, and question information.

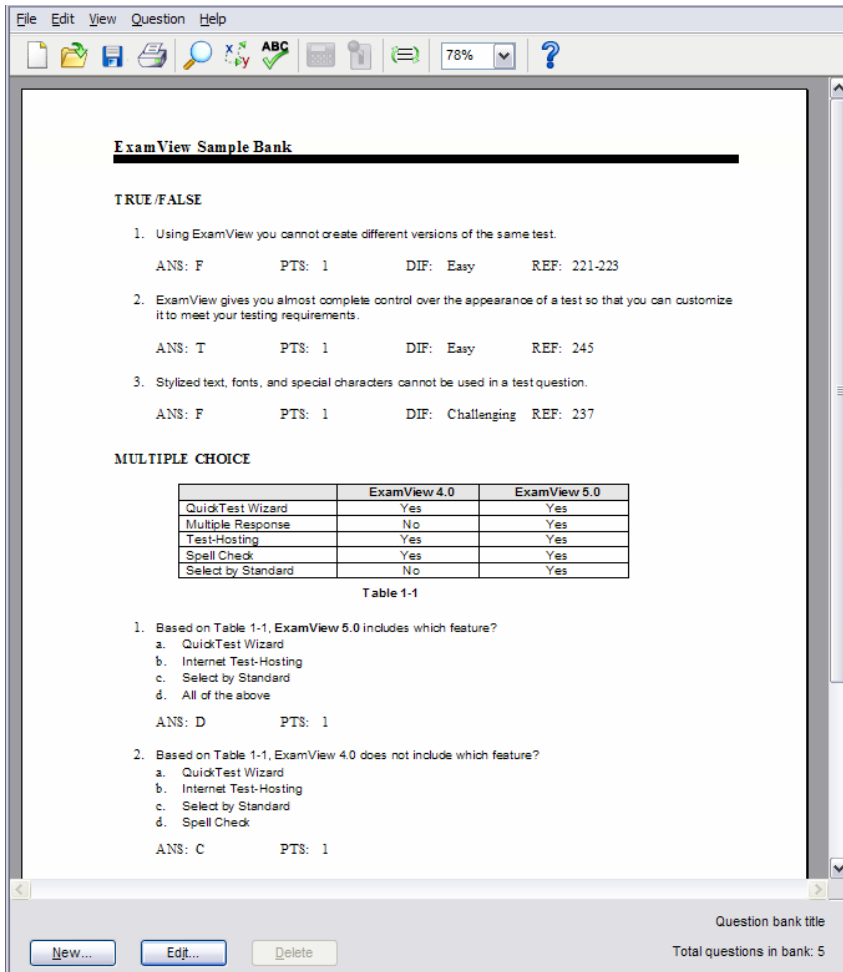
Based on Table 1-1, ExamView 4.0 does not include which feature?

- a. QuickTest Wizard
- b. Internet Test-Hosting
- c. Select by Standard
- d. Spell Check

ANS: C DIF: Average REF: 242-245

11. Click the Narrative pop-up (not the button) and choose the EV Table 1-1 narrative to link this question to the table you already created.

12. Record the question, and be sure to save your work.



Enter Completion Questions and Run Spell Check

1. Choose to create a new completion question.
2. Enter the following question, answers, and question information.

Notice that the question has three possible answers. For online tests, students can respond with any one of the answers.

ExamView is a computer _____
that allows you to build paper and online tests.

ANS:
program
application
tool

DIF: Average REF: 247

*Use the Shift key
and hyphen to
create the space
to write an
answer.*

3. Enter the next question, answer, and question information.

Use the online _____ whenever you need additional
instructions to use the ExamView software.

ANS: help DIF: Easy REF: 251

4. After you record the question, choose **Spell Check** from the **Edit** menu.
5. Save your work.

Create a Short Answer Question with a Picture

1. Choose to create a new short answer question.
2. Enter the following question, answer, and question information; but do not record the question.

Describe the picture above. What format is used and how big is it?

ANS: Student answers will vary depending on the picture used.

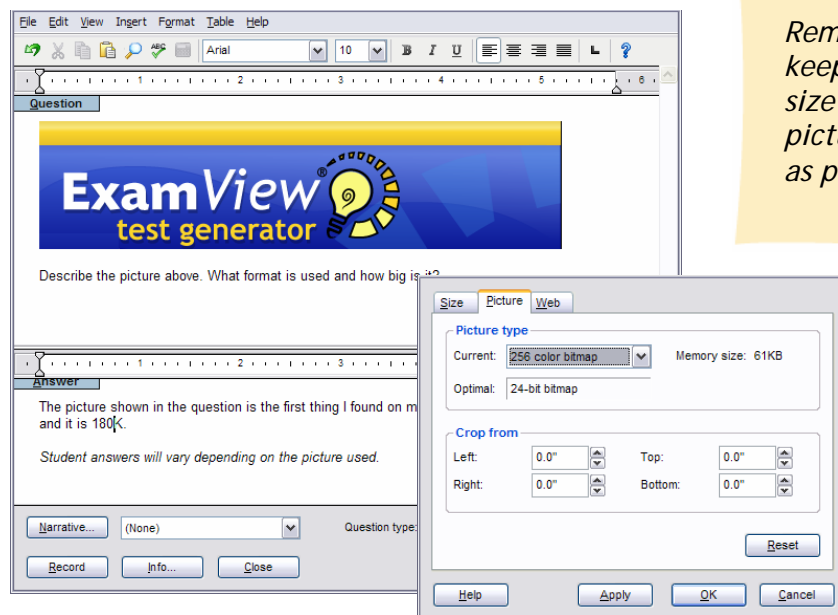
DIF: Average REF: 277

3. Insert one or two blank lines above the question, and move the cursor to the first line.
4. Choose **Picture** from the **Insert** menu, locate a picture, and insert it into the question.

If you cannot find a picture, start a paint program and create a simple illustration. Then, copy and paste the picture into the question.

5. After you insert a picture, double-click the image and choose the **Picture** tab.

This window shows the memory size for the image. You can also change the color settings here.



Remember to keep the memory size of each picture as small as possible.

6. Close the **Format Picture** window and record the question.

Wrap Things Up

1. Save the question bank.
2. Print a copy of the questions and review them.
3. Make any needed changes.

Remember that you can double-click a question or narrative to edit it. Or, you can highlight an item and click the **Edit** button.

If you want, switch to the Test Builder using the **File** menu and choose to create a new test. Use the questions you just entered to build your test. Notice that as you build the test, the instructions automatically appear.

4. Quit the program.

Copy and Paste Questions

If you have questions in another format (e.g., word processor, another test generator, database, etc.), you can copy and paste questions from that program into the **ExamView Test Generator**. While this is a simple process, it can be time consuming. Usually, the copy and paste method is best for just a few questions.

Note: If you have many questions in a word processor format such as Microsoft Word, you can use the import utility to import your questions quickly. Refer to the next section for instructions.

To copy and paste questions...

1. Choose to create a new question in a question bank or a test.
2. Highlight and copy the text (e.g., from your word processor) that you want to paste into a question.
3. Switch to the **ExamView Test Generator** question entry window.
4. Paste the text into the question.

Depending on the question type, you may have to copy and paste the question separately from the answer. However, you can quickly copy/paste multiple choice and multiple response questions. Using the **SmartPaste** option, you can automatically copy the choices into the appropriate places in the question entry window.

To use **SmartPaste**, highlight an entire multiple choice or multiple response question including the choices (a. b. c. d. e.) in your word processor and select **Copy**. Switch to the question entry window and press **F7** (not Ctrl+V or Paste).

Import Questions from a Word Processor

If you have all or most of your questions in a word processor format such as Microsoft Word, you can use the **EV Import Utility** (installed with the other **ExamView** programs) to import your questions into the **ExamView Test Generator** format very quickly. The program includes step-by-step instructions that explain how to import your questions.

WORKING WITH CLASSES AND ASSIGNMENTS

The **ExamView Test Manager** provides the features you need to track results for paper and online tests. To begin, you must create a new class. Then, you can manually enter the student information or import a roster from another format such as your gradebook. Follow the steps in the appropriate section to create a new class and enter your roster.

IMPORTANT: You do *not* have to create a new class if you do not plan to track student results or give online tests.

Create a New Class

Before you enter student information, you must create a new class. To do so, you must enter information about your class (e.g., class name, class ID, period, and section) and yourself (name, ID, school name, school ID, city, and state). Just a few of the fields are required. Other fields, such as the password and school ID, are optional.

To create a new class...



1. Launch the **ExamView Test Manager**. A startup window with two options will appear. Choose the **Start a new class** option.

If you are already working with the **ExamView Test Manager**, save the current class and choose **New Class** from the **File** menu.

*You can change the information at any time by choosing **Class Information** in*

2. Enter the class name and other fields as needed.
3. Enter your name, school name, city, and state. The other fields are optional.
4. Click the **OK** button to record the class information.

New Class

Class Information

Class name:

Class ID: (optional)

Period: (optional)

Section: (optional)

Password: (optional)

Confirm password:

Instructor/School Information

Instructor name:

Instructor ID: (optional)

School name:

School ID: (optional)

City: State/Region:


Enter Student Names and IDs Manually

After you create a new class, the next step is to enter your students. At a minimum, you must enter each student's name and assign an ID. You may also enter an alias and a password. **ExamView Test Manager** provides an option to show the alias instead of the name and ID on reports. You can assign a unique password to each student to use when taking an online (LAN) test.

ExamView Test Manager allows you to generate reports using optional demographic information such as gender, socio-economic factors, race, and custom fields (e.g., instructor, location, etc.). Simply click the **More** button in the **New Student** window to display the data entry fields to record this information.

To enter student information manually...

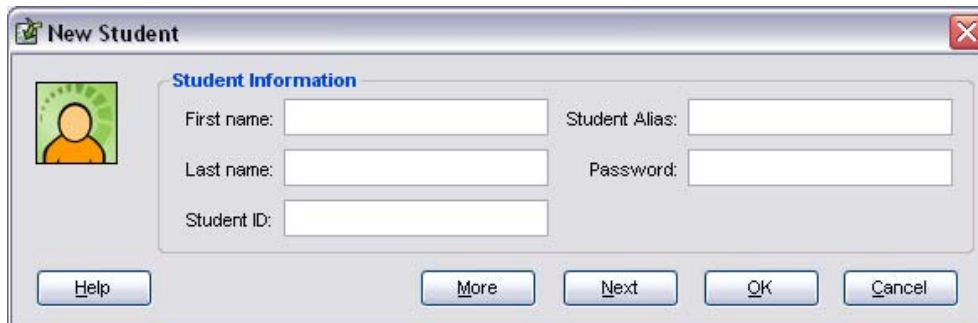


1. Continue from the previous section where you created a new class. Or, start the **ExamView Test Manager** to begin a new class or open an existing class.
2. Click the  toolbar button or choose **Add New Student** from the **Student** menu.
3. Enter the student's first name, last name, and ID.

Note: If you plan to use a scanner, use digits only (e.g., 520403) for the ID. Most scanner forms provide for numeric IDs only. For online testing, use unique student IDs across all of your classes. To assign response devices, use the Custom 3 field (labeled Device ID by default).

The alias and password fields are optional.

Click More to view additional student fields.



4. Click the **Next** button to record the student.

When you click the **Next** button the program records the student and clears the data entry field so that you can enter the next student.

5. Repeat steps 3 and 4 to enter all of your students.
6. Click the **OK** button when you are finished entering students.

Import a Student Roster

ExamView Test Manager makes it easy to import your students from another file. At a minimum, the file must include the student's first name, last name, and ID. The file must be a text file but can include the fields in any order along with other information. In just a few steps you can identify the pertinent information and start the import process.

To import student information...



1. Start ExamView Test Manager to begin a new class or open an existing class.
2. Choose **Import** from the **File** menu.
3. Select the .txt or .csv file that includes the students' names and IDs.
4. Click the pop-up menus in the **First Data Record** from **File** column to identify the data to import.
5. Click the **OK** button to import the student information.

You can import your class roster from another program such as your gradebook.

Import Class Roster

Import file: C:\Documents and Settings\Chris Schaber\Desktop\my roster.txt

Preview

Aber	Alexander	104681655	Aber
Baba	Andy	656526865	Baba
Boehl	Norman	379044498	Boehl

First record in the import file is a header

ExamView Test Manager Field	First Data Record from File
First name:	Alexander
Last name:	Aber
Student ID:	104681655
Password:	(empty)
Student alias:	(empty)

Buttons: Help, OK, Cancel

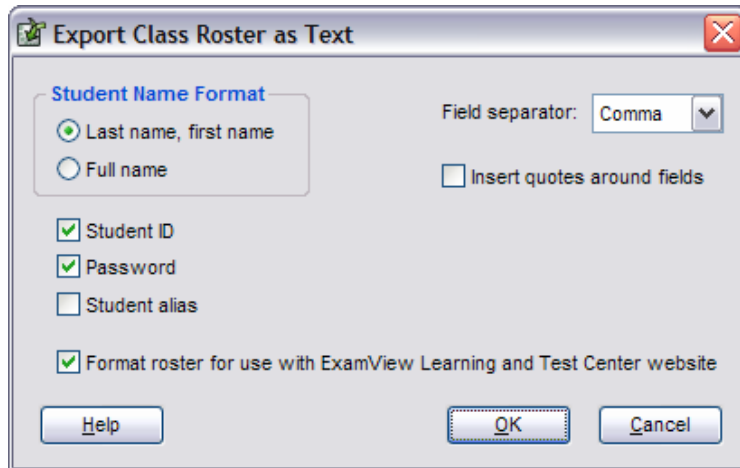
Export a Student Roster

ExamView Test Manager easily allows you to export your student roster for use in other programs. At a minimum, the exported file will include the student names. Choose to export your class roster as either a text file or, for the **Professional Edition** only, as a TurningPoint participant list.

To export a class roster as text...



1. Start ExamView Test Manager to open an existing class.
2. From the **File** menu, choose **Export** then **Class Roster as Text**.
3. Select the desired export options then click the **OK** button.
4. Name the text file and select the save location.



To export a class roster for TurningPoint... (Professional Edition Only)

1. Start ExamView Test Manager to open an existing class.
2. From the **File** menu, choose **Export** then **Class Roster for TurningPoint**.
3. Name the text file and select the save location.

The roster exports student last names, student first names, student IDs, and device IDs as a TurningPoint participant file (.tpp).

Create an Assignment

Before you can score a test, you must first build it using **ExamView Test Generator** and then create an assignment in **ExamView Test Manager**. When you create the assignment, the **ExamView Test Manager** automatically opens the test file and reads the following information for each question (if available): answer, reference, learning objective, local standard, state standard, national standard, and points.

To build a test and create an assignment...



1. Start **ExamView Test Generator**, build a test, and save it.

Automated scoring methods such as scanning or response device transmission only work with objective questions such as multiple choice and true/false. If your test includes open-ended questions such as short answer or essay, you must manually score those questions and record the points.


Note: If you plan to administer multiple (scrambled) versions of a test, create one version, print it, and then save the file. Scramble the test to create the next version, print it, and save the test. For each unique test, you must create a separate assignment.

If your test includes objective and open-ended questions, place the objective questions (e.g., multiple choice) at the beginning of the test.



2. Start **ExamView Test Manager** and choose to open a class.



3. Click  from the toolbar, choose **Create New Assignment** from the **Assignment** menu, or click the **New Assignment** button.

New Assignment

The ExamView Test Manager allows you to track student test results. To collect the results, you need to create a test assignment.

Step 1: Enter the assignment name, ID, category, term, and date.

Assignment name:

Assignment ID: (optional)

Category:

Term: Date:

You can administer tests in several ways—on paper, over a local area network, using the Internet, or through any combination of these methods.

Step 2: Select the way(s) the test will be administered.

Paper test scored manually, with a scanner, or with response devices

Online test delivered over a local area network (LAN)

Online test published to the ExamView Learning and Test Center website

- In the **New Assignment** dialog, enter assignment name, category, term, and date.
- Choose the option(s) to identify how you will administer the test. Click the **Next** button.
- Select the file name that corresponds to the test you created in **ExamView Test Generator**. Click the **Next** button.

*You can click the **Preview Test** button to make sure that you are selecting the correct test.*

When you click the **Next** button, the program reads the answer key and other information that it needs to autoscore the test.

Note: If necessary, click the **Folder** button to locate your test.

- Review the summary information, and click the **Finish** button to complete the process.

After you create the assignment, it appears in **ExamView Test Manager** work area. Notice the highlighted area in the figure below. The program shows the assignment title, date, category, term, and possible points. A placeholder (--) appears for each score.

Washington High School Mathematics 101 Mrs. Juanita Sanchez		Quiz 01	Test 01	Test 02			
		09/03 Quiz Term 1 15 pts	09/10 Test Term 1 40 pts	02/01 Test Term 1 34 pts			
Name	Student ID	Score	Score	Score			
Aber, Alexander	1001	93.3%	87.5%	--			
Boehl, Norman	1002	86.7%	75%	--			
Coston, Denise	1003	73.3%	95%	--			
Gibbons, Roderick	1004	86.7%	82.5%	--			
Henderson, Sherman	1005	86.7%	90%	--			
Hutter, Jean	1006	66.7%	80%	--			
Izquierdo, Rosa	1007	86.7%	97.5%	--			
Karthaus, Detlef	1008	93.3%	82.5%	--			
Kretten, Carl	1009	93.3%	80%	--			
Loeffle, Karsten	1010	80%	95%	--			
Matsui, Etsuko	1011	86.7%	100%	--			
McDowell, Geraldine	1012	86.7%	87.5%	--			
Muñoz, Isabel	1013	93.3%	87.5%	--			
O'Neill, Brian	1014	80%	67.5%	--			
Pitzer, Debbie	1015	73.3%	87.5%	--			
Rhodes, Jackie	1016	80%	90%	--			
Saarinen, Esa	1017	80%	75%	--			
Wallace, Jeff	1018	93.3%	90%	--			
Average		84.4%	86.1%	--			

You will learn how to get results from a various sources in the following sections.

SCORE PAPER TESTS WITH A SCANNER

Using the **ExamView Test Manager**, you can easily score student assignments with a scanner. Currently, the program supports the following dedicated OMR scanners: Apperson Advantage™ 1200 and the Pearson/NCS EZData® scanner. In addition to dedicated OMR scanning, with the **ExamView Assessment Suite Professional Edition** you can use ordinary image scanners to perform plain paper scanning to score assignments.

When you use a scanner to score your students' tests, you...

- Save time.
- Get detailed results data.

Saving time is an obvious advantage. Scanner technology makes it easy to score multiple choice, multiple response, and true/false questions. If a test includes both objective and open-ended questions, you can score the objective questions with a scanner and then manually score the open-ended questions, recording the points earned for those questions.

A scanner makes scoring assignments quick and easy. And, you get detailed results for your class.

The primary purpose of the **ExamView Test Manager** is gathering detailed performance data to help you make effective decisions. A scanner provides a means to gather the data from paper tests to score your students' work and generate various reports. If your tests include learning objectives, state standards, etc., you can then use that information to pinpoint areas where individual students need additional help. You can also use that data to identify trends for your entire class.

IMPORTANT:

- You must use specific forms with the scanners. Go to our website (www.fscreations.com) for a complete list of supported scanners and forms.
- You can only score objective questions (e.g., multiple choice, multiple response, yes/no, and true/false) using a scanner. However, your test may include open-ended questions that you can score manually using the **Edit Scores** option.

Using Bubble Forms for Scanning

After you create an assignment, the next step is to administer the test and have the students fill in their responses on bubble forms compatible with your scanner.

For dedicated OMR scanners, **ExamView**-specific bubble forms must be used. These preprinted forms are ordered from the manufacturer. Refer to the **Dedicated OMR Scanning** section of this guide for details on supported scanner models, form numbers, and manufacturer contact information.



For plain paper scanning (**Professional Edition** only), forms are printed directly from a laser printer from either the **Test Generator** or **Test Manager**. Refer to the **Print a Bubble Form** section in this guide for additional details.

Plain Paper Scanning Notes...

- Plain paper scanning only supports FSCreations bubble forms.
- The bubble form must be installed into the copy of **Test Manager** where the results are being scanned. Verify that the form name appears in the list of forms displayed in the **Print Bubble Form** dialog. If the form name does not appear, visit the FSCreations website (www.fscreations.com) to download the form installer.
- Forms should be printed on letter sized (8.5" x 11") white paper at 100% scale, in portrait orientation only. Plain paper scanning does not support forms printed on other paper sizes, colored paper, or forms that have been scaled or printed in landscape orientation.
- For best results, a laser printer is recommended for printing the bubble forms.
- Forms must either be printed directly from **ExamView** or photocopied from an original printout. Do not use forms that are photocopied from a photocopy.
- Verify that the forms are placed properly into the scanner ADF or flatbed. Check that the orientation of the image side of the form matches the direction specified by the scanner manufacturer.
- Verify that the bubbles are properly filled in with dark marks and erasures are complete.

Dedicated OMR Scanning

Dedicated Optical Mark Recognition (OMR) scanners are designed specifically for reading special bubble forms, ordered from the manufacturer. Scanning these forms reads the students' responses for each question, stores this information for each student, and automatically calculates their score based on the point values assigned to the questions.

The following OMR scanners and forms are currently supported by ExamView Test Manager and appear as options in the **Get Results from Scanner** dialog even if the hardware is not available.

Apperson

Scanner: Advantage 1200
Forms: 2850, 2851, 2854

Website: www.appersonedu.com

Pearson/NCS

Scanner: EZData
Forms: 258936, 258937, 259402, 259404,
259405

Website: www.pearsonnncs.com




EZData™ OMR Scanner



To get results from a dedicated OMR scanner...



1. Launch ExamView Test Manager and open the class.
2. Select (highlight) the assignment that you will be scoring.
3. Click the  toolbar button, or choose **Get Results from Scanner** from the **Assignment** menu.
4. Select the OMR scanner from the drop-down list box. The option to **Print correct answers on scanner sheet** will automatically become enabled if it is a feature supported by the selected scanner model.

5. Select the connection port to which the scanner is connected, or click **Detect Scanner** to automatically set the port.
6. Select the form used from the drop-down list box. The list of available forms will change depending upon the selected scanner model.
7. Set the beginning question number and click **Next**.

Tip: You can use the same forms for several assignments. For example, you can administer and scan a quiz with 10 questions. For the next quiz, set the beginning question number to 11 and have your students fill in the bubbles for questions 11-20.

8. Click **Start Scanning** to activate the scanning session.
9. Scan the forms.

If the student ID on the form does not match an ID in your class roster, the program will give you the option to select the student from your roster.

10. Click **Finish** to accept the scores and return to the gradebook.

General Notes...

- Verify that the scanner is connected properly before you try to scan the forms. If you have trouble with the scanner, contact the manufacturer for support.
- You may include up to 100 objective questions on a test. If you have more than 100 questions, divide the test into two parts and create separate assignments.
- Place the objective questions at the beginning of the test and number the questions consecutively (e.g., multiple choice 1-25, true/false 26-40, etc.).
- If you have problem with a form, you can make corrections and then re-scan it. If necessary, you can manually enter the points earned.
- You can include matching questions, but the choices are limited to the number of choices available on the selected bubble form. Check the form that you intend to use to be sure that the number of answer choices matches your test questions. Or, you can include matching questions and score the questions manually.
- The software allows you to get results for an assignment from multiple sources. For example, you could administer a paper test to part of the class and an online test to other students.
- You can scan forms in multiple sessions.

- If there are problems with a student's form—missing responses, multiple responses, out of range (e.g., entering an E if only A-D valid), etc.—an asterisk (*) will appear next to that student's name. Click the **Stop Scanning** button, highlight the student's name, and click the **Edit** button. You can change the response for any item. Click the **Start Scanning** button to continue.

Apperson Advantage 1200 Notes...

- If the scanner becomes unresponsive, click the **Stop Scanning** button, press the **Reset Options** button (located on the scanner), and then click the **Start Scanning** button. If that does not solve the problem, cancel the scanning process. Turn the scanner off; turn the scanner on; and try to scan the forms again.
- The Apperson scanner prints the percentage score on the scanner form. For tests with only objective questions all set to 1 point, the score will be correct. If your test includes open-ended questions, the score printed on the form will not reflect the open-ended questions. Unfortunately, there is no way to turn off printing. However, you can remove the print cartridges.

Pearson/NCS EZData Notes...

- If the status light turns an orange color, contact the manufacturer for assistance. A problem may occur if there is a conflict between the scanner and another hardware device.
- If you notice that the information is regularly misreading student responses, follow the manufacturer's guidelines for cleaning the scanner.



Plain Paper Scanning (Professional Edition Only)

Plain paper scanning allows you to print bubble forms using an ordinary laser printer and scan the results using a TWAIN compliant image scanner. Because forms can be printed on-demand on standard sheets of paper, plain paper scanning provides great flexibility, convenience, and cost savings over dedicated OMR scanning. Additionally, the hardware required for plain paper scanning can be used for other purposes.


Plain paper scanning reads the students' responses for each question, stores this information for each student, and automatically calculates their score based on the point values assigned to the questions.

IMPORTANT:

- See our website (www.fscreations.com) for a list of image scanners that have been validated for compatibility with the plain paper scanning feature.
- Although not required, it is strongly recommended that the scanner is equipped with an automatic document feeder (ADF) in order to be an effective tool for plain paper scanning.

To get results from a plain paper scanner...



1. Launch ExamView Test Manager and open the class.
2. Select (highlight) the assignment that you will be scoring.
3. Click the  toolbar button, or choose **Get Results from Scanner** from the **Assignment** menu.
4. Select the desired scanner from the drop-down list box.

A separate entry will appear for every imaging device with TWAIN drivers installed on the computer. Some scanner manufacturers will install multiple drivers for a scanner, so multiple entries will appear in the list for a single scanner. Try to select the entry for the scanner that is most appropriate for the model and connection of your scanner.

Tip: With plain paper scanning, there is no need to specify a form and an assignment does not have to be answered using the same form for all students. For example, you can administer a 50 question multiple choice test with most of the class using form FSC50AE, but give students with special needs form FSC50AE Jr. There is no need to sort the forms or specify which forms are being used. The form information is automatically read in from each sheet as it is scanned.
5. Set the beginning question number and click **Next**.

Tip: You can use the same forms for several assignments. For example, you can administer and scan a quiz with 10 questions. For the next quiz, set the beginning question number to 11 and have your students fill in the bubbles for questions 11-20.

6. Load the forms into the scanner ADF tray or flatbed.

Forms may be rotated 180° from each other but must be placed with the image sides properly facing the scanning surface. Check that the orientation of the image face of the forms matches the direction specified by the scanner manufacturer.

7. Click **Start Scanning** to initiate session.

8. Scan the forms.

If the student ID on the form does not match an ID in your class roster, the program will give you the option to select the student from your roster.

9. Click **Finish** to accept the scores and return to the gradebook.

Notes...

- Verify that the scanner is connected properly before you try to scan the forms. If you have trouble with the scanner, contact the manufacturer for support.
- If you have more questions than can be accommodated on a form, divide the test into two parts and create separate assignments.
- Place the objective questions at the beginning of the test and number the questions consecutively (e.g., multiple choice 1-25, true/false 26-40, etc.).
- If you have problem with a form, you can make corrections and then re-scan it. If necessary, you can manually enter the points earned.
- You can include matching questions, but the choices are limited to the number of choices available on the selected bubble form. Check the form that you intend to use to be sure that the number of answer choices matches your test questions. Or, you can include matching questions and score the questions manually.
- The software allows you to get results for an assignment from multiple sources. For example, you could administer a paper test to part of the class and an online test to other students.
- You can scan forms in multiple sessions.
- If there are problems with a student's form—missing responses, multiple responses, out of range (e.g., entering an E if only A-D valid), etc.—an asterisk (*) will appear next to that student's name. Click the **Stop Scanning** button, highlight the student's name, and click the **Edit** button. You can change the response for any item. Click the **Start Scanning** button to continue.

SCORE PAPER TESTS WITH RESPONSE DEVICES



Using the ExamView Test Manager, you can easily score student assignments with response devices (Professional Edition only). Currently, the program supports the following devices: Turning Technologies ResponseCard[®] XL response pads with IR receiver (www.turningtechnologies.com).

When you use response devices to score your students' tests, you...

- Save time.
- Get detailed results data.
- Engage students with technology.

Similar to scanning results, response device technology makes it easy to score most objective questions (e.g., multiple choice, yes/no, and true/false). However, unlike a scanner, response devices do not support multiple response questions. If a test includes both objective and open-ended questions, you can score the objective questions with response devices and then manually score the open-ended questions, recording the points earned for those questions. Using response devices has the added advantage of engaging students with technology. Entering and transmitting answers with response pads is fun and easy!

Assigning Response Device IDs

In order to correlate the transmitted data with student records, response device IDs must be assigned to students.

To assign a device ID...

1. If the **Student Information** window is not already open, double-click the student you want to edit. Or, highlight the student and choose **Edit Student Information** from the **Student** menu.
2. If the **Optional Information** fields are not already visible, click **More** to view the additional fields.
3. Enter the response device ID in the third custom field, labeled **Device ID** by default. To assign device IDs to additional students, choose the student you wish to edit from the list on the left or click **Previous** or **Next**.
4. When you are finished assigning device IDs to students, click **Done**.

Notes:

- Enter the device IDs carefully. Because there is no standard format for device IDs, Test Manager does not validate the ID or check for duplicate entries in the class roster. When data is transmitted from a device, however, duplicate Device ID entries will generate an error.
- The Device ID assignment uses the Custom 3 field of the Student Information. This field label can be renamed from the Student Preferences. However, Test Manager uses the Custom 3 field to find device IDs no matter what the label name may be changed to.




Get Results from Response Devices (Professional Edition Only)

After you create and administer the assignment, students enter their answers into response devices then transmit the results directly into **ExamView Test Manager**. The program records the score for each student based on the point values assigned to the questions. Student results are saved for a detailed analysis of their performance.

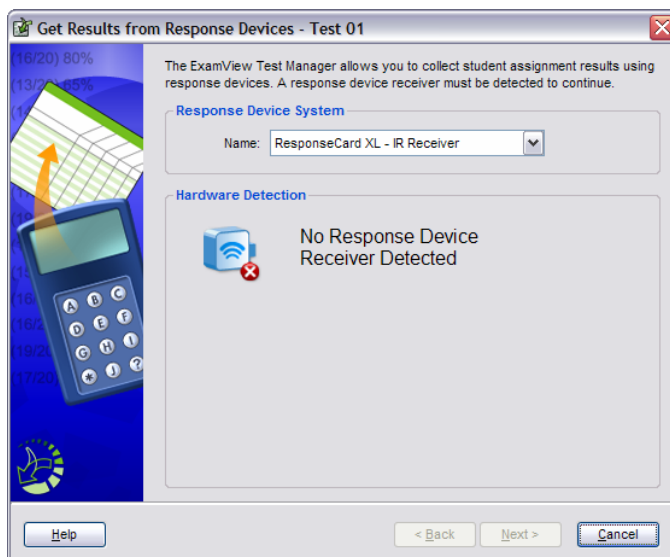
To get results from response devices...



1. Launch **ExamView Test Manager** and open the class.
2. Select (highlight) the assignment that you will be scoring.
3. Click the  toolbar button, or choose **Get Results from Response Devices** from the **Assignment** menu.

Note: The gradebook window is completely hidden when the **Get Results from Response Devices** dialog is opened. This allows students to view the screen while transmitting their data to the receiver.

4. Select the response device system from the drop-down list.



Once a response device system is selected, **ExamView Test Manager** will automatically check that the proper receiver hardware is attached to the computer. The **Next** button will be disabled until a receiver is detected.

5. Click the **Next** button to move to the next screen.
6. Transmit the data from the response devices to the receiver. Student names and IDs are displayed in the dialog as their results are successfully transmitted.
7. Click the **Finish** button to stop transmitting data and return to the gradebook.

Notes:

- The response device system software must be installed for it to appear in the list. For example, TurningPoint must be installed before the ResponseCard[®] XL devices will appear as an option.
- If the response device system software is installed and the receiver is connected but fails to be detected, unplug and plug the receiver back in.
- Once the **Next** button is clicked, do not unplug the receiver until the dialog is dismissed.
- For successful transmission of data using the ResponseCard XL pads, students need an unobstructed line-of-sight path to the receiver. It is recommended that students approach the receiver one at a time and stand within 10 ft. of the receiver to transmit their results. The response pad must be directed straight at the receiver for the duration of the transmission, which should take no more than a few seconds. Failure to completely transmit the data will result in no name being added to the list. Students should simply re-transmit their data until their name appears in the list.

ADMINISTER ONLINE TESTS ON YOUR LOCAL AREA NETWORK

The **ExamView Assessment Suite** includes all of the tools you need to create and administer online tests on your local area network (LAN). Use the online testing features to save time grading tests and generate the information to improve student performance.

You can create online tests that anyone can take using your local area network (LAN), or you can assign a roster to an online test. For example, you can use **ExamView Test Generator** to create self-grading practice tests (or study guides) that provide feedback for incorrect responses. You can also use this testing option to administer chapter tests, quizzes, benchmark tests, homework, and worksheets. Then, use **ExamView Test Manager** to get results from an online test and produce reports.

Before You Begin

Before students can take tests using your local area network (LAN), you must get ready for online testing.

1. Talk to your network administrator to secure space on your local area network to put the online tests.

You and your students both need read/write (full) access to the network folder.

2. Ask your network administrator to install the **ExamView Test Player** on your network and to place a shortcut on each workstation to access the program. Or, you can install the player program on each computer.

Talk to your network administrator to get everything set up before you publish an online test.

Advanced: You can create a shortcut for the program and set the target properties to include the following options. For example, set the target to `c:\examview\evpro.exe /nobrowse`.

`/nobrowse` This option turns off the option for students to change the path (or location) of the tests.

`/noprefs` This option directs the program not to write the preferences to the local computer.

`/testpath=` This option allows you to set the default path for the tests.


3. Start **ExamView Test Generator**, choose **Preferences** from the **Edit** menu, and set the default online (LAN) path to the location on the network.

Create an Online (LAN) Test without a Roster

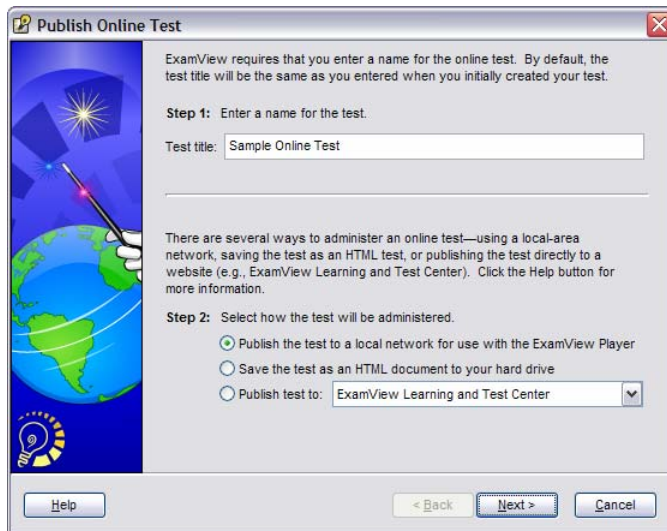
You can publish an online test with or without a roster for your students to take on your local area network (LAN). If you choose to publish a test without a roster, the program automatically scores the test. Anyone may take the test; however, the results are only available immediately after a student completes a test. No results are stored in ExamView Test Manager, and you will not be able to prepare any student/class reports.

To create and publish an online (LAN) test that anyone can take...



1. Start ExamView Test Generator and create or open a test.
2. Click  from the toolbar or choose **Publish Online Test** from the File menu.
3. Enter a test title.
4. Choose the **Publish the test to a local network for use with the ExamView Player** option and click the **Next** button.

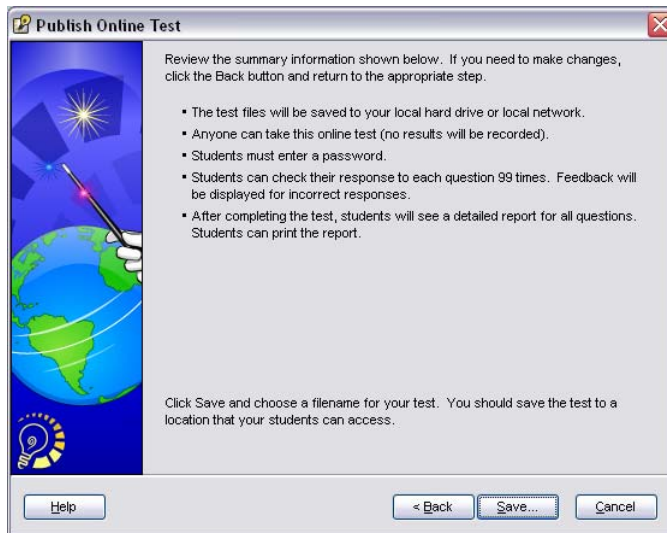
Results are not stored for online tests without a roster. These tests are great for practice tests and homework.



5. Select the **Allow access to anyone** option and click the **Next** button.
6. Follow the steps to set the remaining options (i.e., password, student feedback, question order, and reports) for the online test.

The program provides numerous options that allow you to customize the online testing experience for your students' needs. Click the **Help** button to view detailed information about the online testing options.

7. Review the test summary information and click the **Save** button to save the online test to your local area network (LAN).



You can set the default folder using the Preferences option in the Edit menu.

Note: When you save the online test, the program saves a specially formatted copy of the test (with an .eot extension) to the location you specified. Remember that your students must access the test file on the local area network (LAN). If you saved the test to your hard drive, you must copy the online test (.eot, not .tst) to your network.

8. If your test includes links to any multimedia files, you must copy those files manually to the same location as the online test.

Students can now take the online test. See the **Take a Test with the Test Player** section.

IMPORTANT: Preview the online test to make sure that everything is working. If you notice an error, make changes to the original test and publish it again.


Create an Online (LAN) Test with a Roster

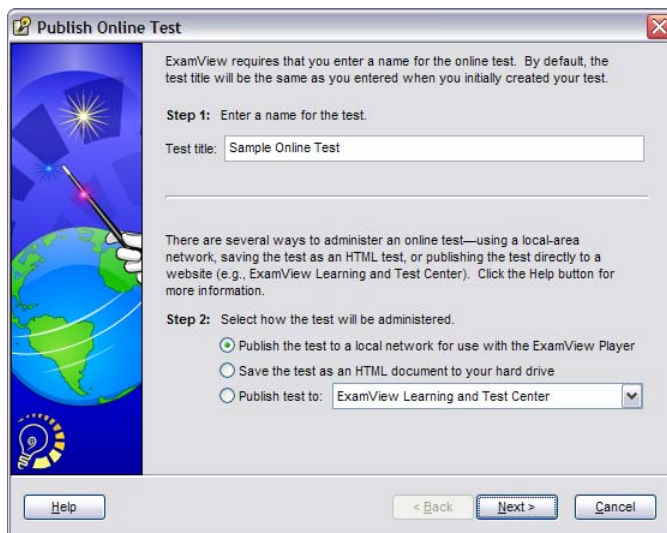
With the **ExamView Assessment Suite**, you can easily track student test results. When students take an online test, the program automatically scores the objective questions and stores the information in a database. Then you can produce a variety of reports and/or copy the results to your gradebook.

To create an online test with a roster, you must first build and publish the online test using the **ExamView Test Generator**. Then, you must complete the process by creating an assignment in the **ExamView Test Manager** program.

To create a test, publish the test, and track results for selected students...



1. Start the **ExamView Test Generator** and create or open a test.
2. Click  or choose **Publish Online Test** from the **File** menu.
3. Enter a test title.
4. Choose the **Publish the test to a local network for use with the ExamView Player** option and click the **Next** button.



If you include open-ended questions, it is easy to score student responses manually.

5. Choose the **Allow access to students in a particular class** option and click **Next**.
6. Review the summary information and click the **Save** button to save the online test.

Note: When you save the online test, the program saves a copy of the test (with an .eot extension) to the location you specified. Remember that your students must access that location on the local area network (LAN). If you saved the test to your hard drive, you must copy the online test (.eot, not .tst) to your network.

7. If your test includes links to any multimedia files, you must copy those files manually to the same location as the online test.

To assign an online test to a class...



1. Start the ExamView Test Manager (if necessary).

After you publish an online test, you must complete the process by creating an assignment for that class.

2. Open a class file.

3. Click  or choose the **Create New Assignment** option from the **Assignment** menu.

4. Enter the assignment name, category, term, and date.

New Assignment

The ExamView Test Manager allows you to track student test results. To collect the results, you need to create a test assignment.

Step 1: Enter the assignment name, ID, category, term, and date.

Assignment name:

Assignment ID: (optional)

Category: Benchmark

Term: 1 Date: 02/02/2006

You can administer tests in several ways—on paper, over a local area network, using the Internet, or through any combination of these methods.

Step 2: Select the way(s) the test will be administered.

Paper test scored manually, with a scanner, or with response devices

Online test delivered over a local area network (LAN)

Online test published to the ExamView Learning and Test Center website

Help < Back Next > Cancel

5. Choose the **Online test delivered over a local area network (LAN)** option to identify how you will administer the test. Click the **Next** button.

6. Select the file name that corresponds to the test you published in the **ExamView Test Generator**.

7. You can allow your students to complete the test multiple times or over multiple sessions. Select the appropriate option(s) and click the **Next** button.

If you allow students to complete an online test over multiple sessions, the program will save their work and let them continue where they left off in a prior session.

Select an ExamView online test (.eot), not a regular test (.tst) file name.

You can preview a test to make sure it is the right one.

- Follow the steps to set the remaining options (i.e., password, student feedback, question order, time limit, and reports) for the online test.

The program provides numerous options that allow you to customize the online testing experience for your students' needs. Click the **Help** button to view detailed information about the online testing options.

New Assignment

Students are required to enter a password before they can access the test. If you want all students to use the same password, or if some students have not been assigned individual passwords, enter a password below.

Step 4: Enter a password required to access the test.

Password:

Use only for students with no assigned password
 Use for all students

Students may take the test anytime they want, or you may limit access to this online test to a specific range of dates.

Step 5: Specify when students may take this online test.

Students may access this test anytime
 Students may access this test

from 12 AM : 00
to 12 AM : 00

Students may review their test results after

Buttons: Help, < Back, Next >, Cancel

- Review the summary information and click the **Finish** button.

After you create the assignment, it appears in the **ExamView Test Manager** work area. Notice the highlighted area in the figure below shows the assignment title, date, category, term, and possible points. A placeholder (--) is set for each student's score.

Sample Class.cls - ExamView Test Manager

File Edit View Student Assignment Report Help

100%

Washington High School
Mathematics 101
Mrs. Juanita Sanchez

		Quiz 01	Test 01	Test 02			
		09/03	09/10	02/01			
		Quiz	Test	Test			
		Term 1	Term 1	Term 1			
		15 pts	40 pts	34 pts			
Name	Student ID	Score	Score	Score			
Aber, Alexander	1001	93.3%	87.5%	--			
Boehl, Norman	1002	86.7%	75%	--			
Coston, Denise	1003	73.3%	95%	--			
Gibbons, Roderick	1004	86.7%	82.5%	--			
Henderson, Sherman	1005	86.7%	90%	--			
Hutter, Jean	1006	66.7%	80%	--			
Izquierdo, Rosa	1007	86.7%	97.5%	--			
Karthauss, Detlef	1008	93.3%	82.5%	--			
Kretten, Carl	1009	93.3%	80%	--			
Loeffle, Karsten	1010	80%	95%	--			
Matsui, Etsuko	1011	86.7%	100%	--			
McDowell, Geraldine	1012	86.7%	87.5%	--			
Muñoz, Isabel	1013	93.3%	87.5%	--			
O'Neill, Brian	1014	80%	67.5%	--			
Pitzer, Debbie	1015	73.3%	87.5%	--			
Rhodes, Jackie	1016	80%	90%	--			
Saarinen, Esa	1017	80%	75%	--			
Wallace, Jeff	1018	93.3%	90%	--			
Average		84.4%	86.1%	--			

18 students, 3 assignments

Buttons: New Student..., New Assignment..., Edit..., Delete

10. You should preview the online test to make sure that the test itself and online settings are correct.

IMPORTANT: To preview a test with a roster, start the **EV Test Player** and use one of your student's IDs to access the test. When you finish, go to the **ExamView Test Manager**. Open the class file, select the assignment, and choose the **Get Results from a LAN Test** option. You should see the score for that student. Next, highlight (select) the student record and choose **Clear Student Results** from the **Student** menu. Be sure to clear the results for only the test you just previewed. Be sure to choose the **Update Online Tests** option in the **File** menu to apply the updates to the online test.

Notes..

- You can assign the same online test to multiple classes. Simply open another class file and create an assignment. Point to the same online test when you create the assignment. Make sure that your students' IDs are unique across all classes.
- If you need to make any changes to the online settings (e.g., change the password, edit the reporting options, etc.), choose the **Edit Assignment Information** option from the **Assignment** menu.
- If you notice mistakes in questions, misspelled words, etc. **before** any students take a test, make your changes to the original test and publish it again. **IMPORTANT:** You must **delete** the assignment from the class and then create a new one. Otherwise, the answer key and other information will not match the online test.
- If you notice mistakes in questions, misspelled words, etc. **after** any students take a test, you cannot make changes to the test. However, you can adjust the points earned to adjust students' scores as needed.
- If you identify an incorrect answer or point value, choose the **Edit Assignment Information** option from the **Assignment** menu. Click the **Questions** tab and change the information. You can change an answer or point value anytime without re-publishing the test. These changes are not updated in the actual test, but they are applied to the students' results.

Take a Test with the Test Player

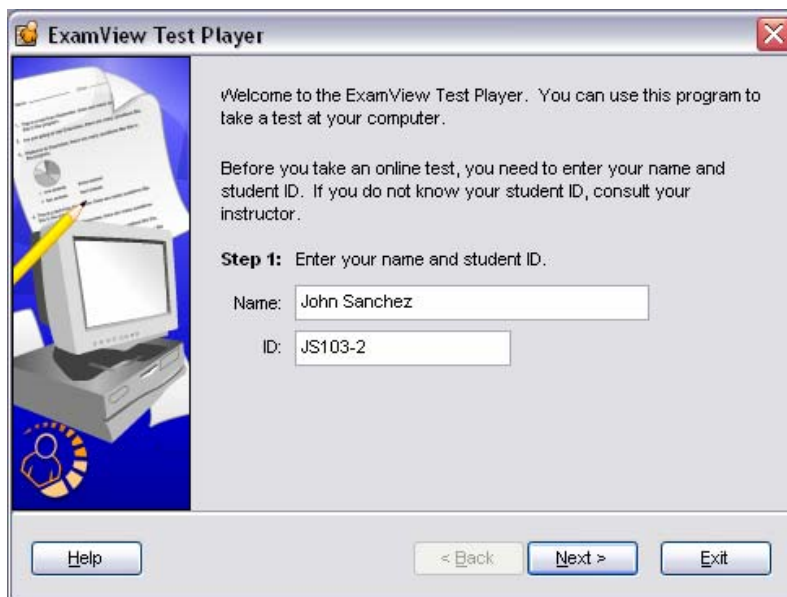
For tests that you administer on your local area network (LAN), students must use the **ExamView Test Player** to take the test. Before your students can take the test, make sure that the program is installed on your network and that students have read/write (full) access to the folder where the test is located.

You can include any question type (multiple choice, true/false, numeric response, completion, essay, etc.) on an online test. The program automatically scores any objective (e.g., multiple choice), completion, or numeric response questions. You must manually score any open-ended (e.g., essay) questions as described in the next section—*Get Results from a LAN Test*.

To take an online test...



1. Start the **ExamView Test Player** program.
2. Enter the student name and ID. Click the **Next** button to continue.



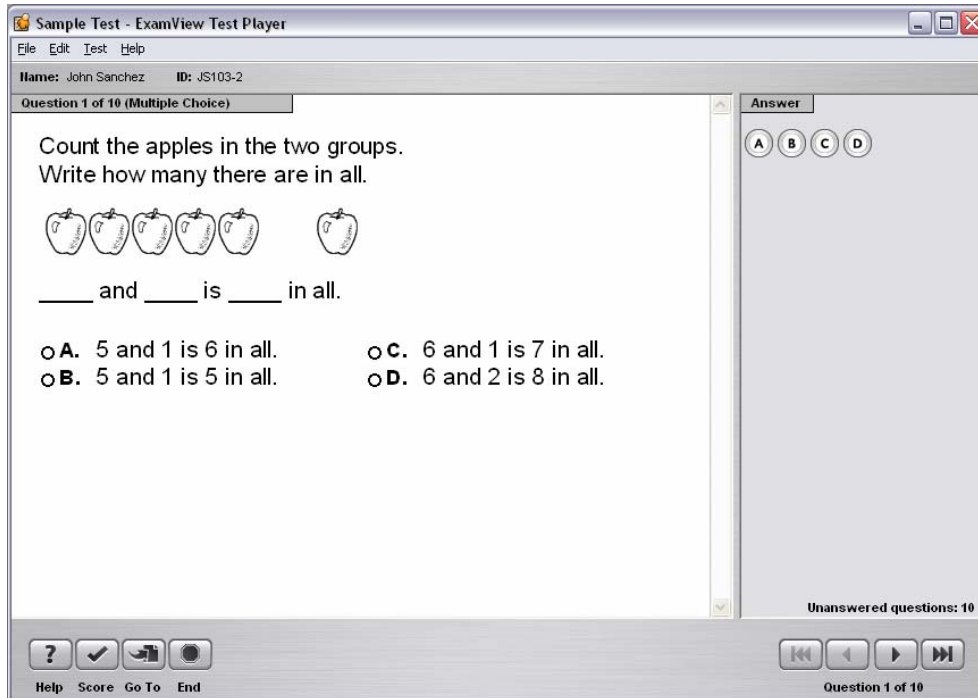
3. Select the test and click the **Next** button.

If you do not see the test listed, click the **Folder** button to change the location (if necessary). The program will show only those tests that the student may access. For example, if you set a date range when the test is available, you will not see the test if the current date is not in that range.

If a student enters their ID incorrectly, no tests will appear in the list.

- Review the test information and click the **Start** button to begin the test.

The **ExamView Test Player** displays one question at a time. Students can answer a question by clicking the radio buttons, clicking the choice buttons, or by typing a response.



The options available to the student depend on the online settings. For example, if you set the option to allow students to check their work, the **Score** button appears at the bottom of the window. If you set a time limit, a timer is displayed.

Get in the habit of previewing a test to make sure that you selected the appropriate settings.

- Respond to each question. Click the **Next** button or press **Page Down** to go to the next question.
- Click the **End** button when you are finished.

Depending on the reporting options you set, a report will appear.

- Click the **Exit** button to quit the program, or click the **New** button to start a new test.

You can set an option to show the end-of-test report and whether students can print the report.


Get Results from a LAN Test

After your students take an online test, the next step is to get the results into the ExamView Test Manager. When you perform this step, the program reads the results and stores the data in the class record. If your test includes open-ended questions, you must manually score the questions and record the points earned.

Remember, that student results are stored only for online tests that you assigned to a class.

To get results from a LAN test...

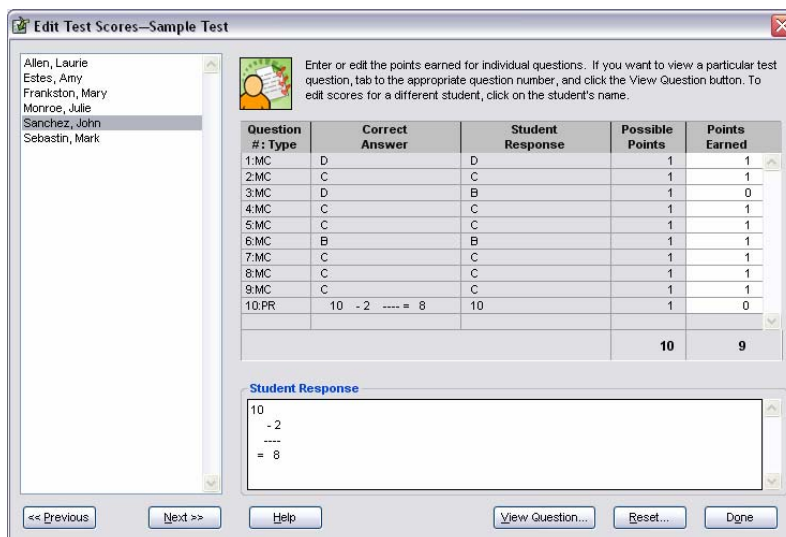


1. Start the ExamView Test Manager program.
2. Select (highlight) the assignment for which you want to get results.
3. Click  or choose the **Get Results from LAN Test** option from the **Assignment** menu.

The program automatically locates the online test file (with an .eot extension) and reads the results from it. If you moved the file, you must locate it.

4. If your test included open-ended questions or you need to change a student's score, select the assignment and choose the **Edit Scores** option from the **Assignment** menu.

The **Edit Test Scores** window shows you how your students answered each question and the points earned. Select a student. For open-ended questions, select a question. The student's response appears for your review. Read the response and enter the points earned. Click the **Next** button to move to the open-ended question for the next student. You can change the points earned for any other question too.



Question # : Type	Correct Answer	Student Response	Possible Points	Points Earned
1:MC	D	D	1	1
2:MC	C	C	1	1
3:MC	D	B	1	0
4:MC	C	C	1	1
5:MC	C	C	1	1
6:MC	B	B	1	1
7:MC	C	C	1	1
8:MC	C	C	1	1
9:MC	C	C	1	1
10:PR	10 - 2 ---- = 8	10	1	0
			10	9

Student Response

10
- 2

= 8

<< Previous Next >> Help View Question... Reset... Done

PUBLISH A TEST TO THE LEARNING & TEST CENTER

Using the **ExamView Test Generator**, you can publish an online test in several ways. One of those ways is to publish a test/assignment directly to an Internet test-hosting service called the **Learning & Test Center**. A test-hosting service offers these advantages: (1) publish to the Internet with just a few mouse clicks; (2) results tracking and reporting; (3) control over when and who takes a test; and (4) no additional hardware or maintenance costs.

FSCreations, Inc. (the developers of the **ExamView Assessment Suite**) offers an optional test-hosting service on an annual subscription basis. For more information and pricing, visit our website at www.fscreations.com.

With the Learning & Test Center, you can...

- Publish a self-grading practice test in just a few steps that your students can take from anywhere they have access to a computer and the Internet.
- Administer homework and automatically score it without any additional effort on your part.
- Deliver benchmark tests to a class or an entire school.
- Produce numerous reports that let you track student performance by standard.

Other companies may offer an online service. Check with your sales representative or visit their website for more details. If you do have access to a third-party service, follow the steps below to publish a test. However, be sure to choose the appropriate option from the **Publish test to:** pop-up menu. After you publish the test, refer to the instructions for that service to administer the assessment. **IMPORTANT:** You will not use the **ExamView Instructor Center** or **Learning & Test Center** to administer tests published to another service.

Register for the Learning & Test Center

Before you use the **ExamView Learning & Test Center**, you must purchase a certificate number and then use it to register for an account. When you register, you receive an instructor ID and a password.

To register for an account...

1. Visit www.fscreations.com/examview.php and click the **Instructor Center** link.
2. Click the **Register** link and follow the instructions to sign up for the service.

Be sure to record your instructor ID and password.
You will also receive an email with this information.

3. Quit the browser when you finish.


After you register online at the FSCreations website, you can change your ID and/or password.

Publish a Test or Assignment

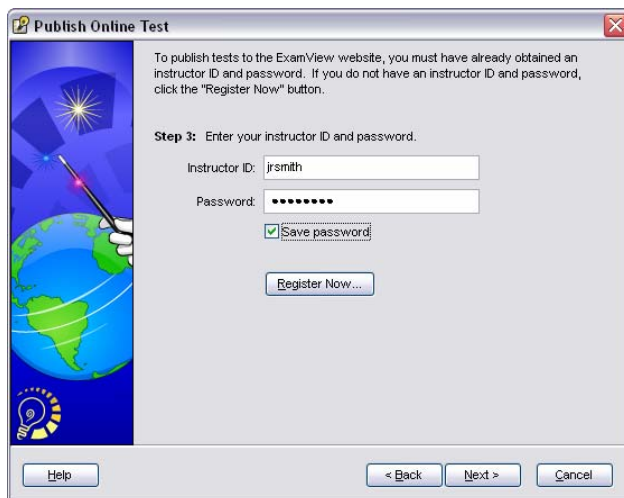
Publishing a test/assignment (regular or self-scoring) to the ExamView Learning & Test Center is a very simple process. Within minutes, you can create a test or an assignment for students to take online. Test or homework results are available immediately after your students complete the assignment.

To publish an assignment...



1. Start the ExamView Test Generator, and create or open a test.
2. Click  or choose the **Publish Online Test** option from the **File** menu.
3. Enter a title for the test/assignment.
4. Select **Publish test to:** with the pop-up showing **ExamView Learning & Test Center Website**. Click the **Next** button to display the log in screen.
5. Enter your instructor ID and password, and then click the **Next** button.

*If you have an account with another service, select it from the **Publish to:** pop-up and enter the appropriate ID and password.*



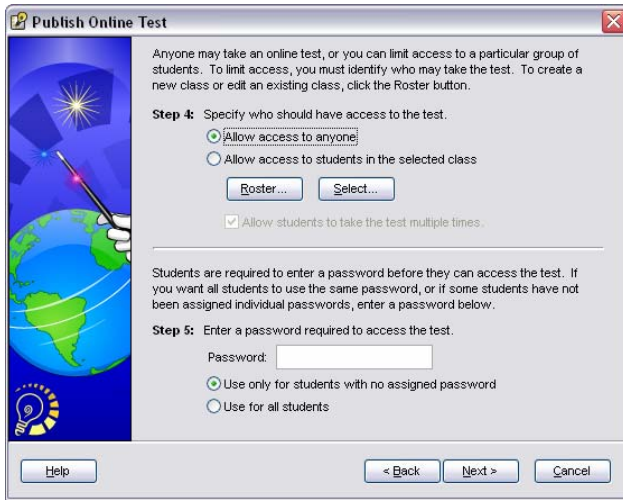
The screenshot shows a dialog box titled "Publish Online Test". It contains the following text: "To publish tests to the ExamView website, you must have already obtained an instructor ID and password. If you do not have an instructor ID and password, click the 'Register Now' button." Below this, it says "Step 3: Enter your instructor ID and password." There are two input fields: "Instructor ID:" with the text "jrsmith" and "Password:" with a masked password "*****". A checkbox labeled "Save password" is checked. A "Register Now..." button is located below the password field. At the bottom of the dialog box, there are three buttons: "Help", "< Back", and "Next >", and a "Cancel" button.

6. Select the option to determine who may access the test.

You can allow anyone to take the assignment or control access to students in a particular class. If you do not care about getting student results or how many times a student completes an assignment, allow access to anyone.

If you want to track your students' results, you must assign a class. You can create a roster or import student names and IDs from another file.

7. Set a password for the assignment and click the **Next** button.



After you publish an assignment, you can preview it and edit many of the settings online at the Instructor Center.

8. Select the remaining online options.
9. Review the summary information, and click the **Publish** button to upload the assignment to the website.

After you publish the assignment, you will receive an email that confirms you published the assignment successfully. The email also includes instructions that you can provide to your students.

Access the ExamView Instructor Center

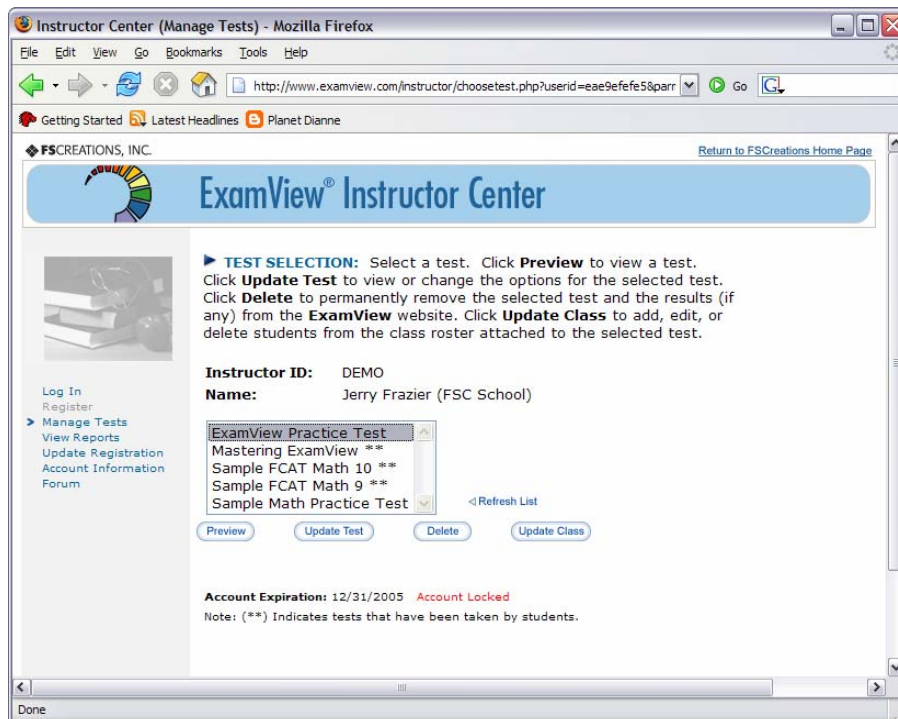
The ExamView Instructor Center provides access to tests you publish via the test-hosting service. Access the Instructor Center using a web browser on any computer connected to the Internet.

Using the ExamView Instructor Center, you can...

- Preview a test/assignment.
- Change selected test settings.
- Edit, change, or delete students.
- Access numerous student reports.
- Delete tests.
- Update your account information (ID, password, email address, etc.).

To access the ExamView Instructor Center...

1. Go to the www.fscreations.com website.
2. Click the Instructor Center link.
3. Enter your instructor ID and password to log in to the Instructor Center.
4. Link to the desired option to manage tests, view reports, update account information, etc.



Complete a Test/Assignment via the Internet

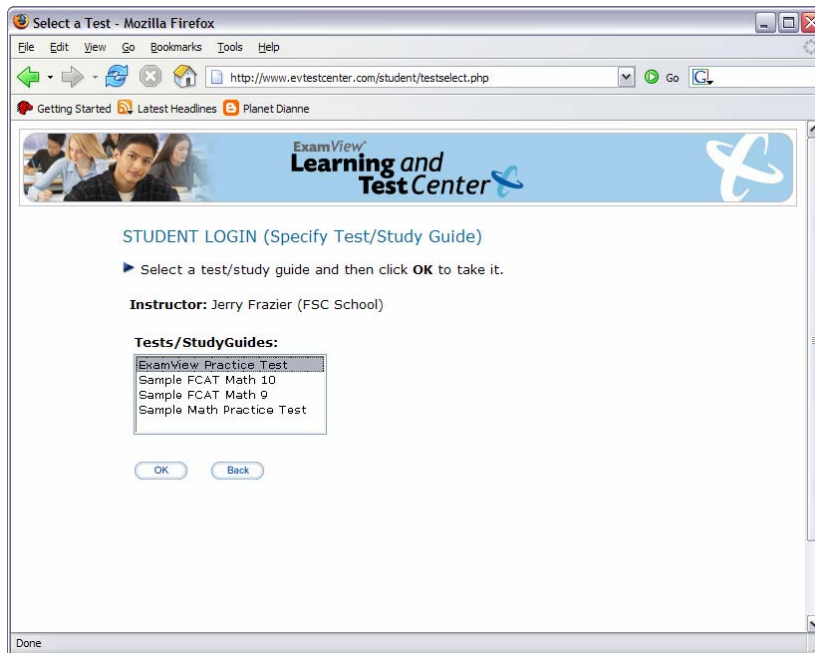
Students can take a test or complete an assignment using any computer (Windows or Macintosh) connected to the Internet (e.g., at school, in a lab, or at home). When you are ready for students to work online, direct them to the www.evtestcenter.com website.

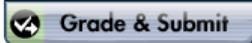
When you publish an assignment, you get an email with a link to the test. Students can use that link to skip the log in process.

To take an online test or complete an assignment...

1. Go to the www.evtestcenter.com website.
2. Enter the Instructor's ID.

After you log in, you will see a list of the available tests/assignments.



3. Highlight an item and click the OK button.
4. Enter the student ID or name, and enter the password.
IMPORTANT: If you published a test/assignment with a roster, your students must enter the ID you assigned to them. If you allowed anyone to access the assignment, students must enter their name.
5. Complete the test/assignment. Click  to submit and/or view the results.

Get Results from an Internet Test/Assignment

Using the **ExamView Test Manager** you can download results from the **Instructor Center** to your desktop. Then, you can produce reports using the reporting options provided in the **ExamView Test Manager**. You can combine results from all of your assignments (paper, LAN, or Internet) into one convenient location.

Before you can download the results, publish your test/assignment with the **ExamView Test Generator** using the various online settings described in the previous sections. Administer the test or homework assignment to your students.

IMPORTANT: Getting the results from an Internet test is optional since you can access many reports online at the **ExamView Instructor Center**. With the test-hosting service, you can view student results and generate numerous reports online. You do **not** have to download the results into the **ExamView Test Manager**.


To get results from an Internet test/assignment...

1. Publish and administer a test/assignment to the **Learning & Test Center**.



2. Start the **ExamView Test Manager** (if necessary) and open a class.

3. Create an assignment if you have not already done so. Enter the assignment information and identify the test (.tst) for the program to read the answer key and other question information (standards, references, etc.).

4. Highlight the assignment. Click  or choose **Get Results from Internet Test**.

5. Enter your instructor ID and password, and click **Next**.

6. Select the Internet test from the list provided and click **Finish** to get the results.

The **ExamView Test Manager** downloads all of the students' responses and results from the Internet test-hosting site. If your test includes open-ended questions or you need to change a student's score, select the assignment and choose the **Edit Scores** option from the **Assignment** menu.

Notes...

- When you publish an assignment, be sure to save a copy locally on your computer. The assignment you publish online must match exactly the one you use to create an assignment in the **Test Manager**.
- You can administer a test using any combination of paper, local area network (LAN), or Internet testing options.
- Unlike tests administered via a LAN, you cannot change the settings in the **ExamView Test Manager**. You must make any changes to these settings and the class roster online at the **Instructor Center**.

PREPARE REPORTS FOR PAPER AND ONLINE TESTS

The **ExamView Test Manager** enables you to prepare a variety of reports based on your students' assignment results data. You can print a report for a single assignment, a group of assignments, or all assignments. You can also easily customize a report to include selected students filtered by various criteria. Many of the reports include graphs and charts that provide a visual analysis of the data.

Use the **ExamView Test Manager** to generate the following class and reports.

Class Reports

- Assignment Results
- Class Assignment Summary
- Open-Ended Responses Worksheet
- Item Analysis Summary
- Class Roster
- Learning Focus
- Performance Summary
- Class Performance Progress Chart

Student Reports

- Assignment Results
- Assignment Review
- Student Progress Report
- Learning Focus
- Performance Summary

For each report, you can choose reporting options to control the information included in the report. Using the filter option, you can generate reports for selected students or a group of students that match the criteria you set.

Class Reports

The **ExamView Test Manager** provides numerous reports to help you understand and evaluate your students' performance. Depending on your needs, you may prepare one or more of the class reports to provide useful performance data that allows you to assess your class as a whole and then determine appropriate strategies to achieve the learning objectives/standards. With each report, you can control numerous reporting options to customize the report as desired. This section includes a brief overview and a sample of each class report.

Assignment Results

The **Assignment Results** report provides performance data for each student for a particular assignment. The report includes the student's name, ID, points earned, and percentage achieved. For online test, the report also includes attempts to complete the assignment, the start time (date and time), and the duration of the assignment (i.e., the total time to complete the assignment).

The report also includes a separate page with the assignment statistics for the entire class (i.e., median, mean, low score, high score, range, and standard deviation) and a graph of the frequency distribution. When you choose this report, you can control various reporting options. For example, you can choose to show all of the student information or you can include the ID or alias for each student.

Using the statistical data in the **Assignment Results** report, you can see how the majority of the students performed on the assignment. The duration data provides useful information for future reference; you can calculate the approximate amount of time required for the students to complete the assignment. Finally, you might use the **Assignment Results** report to post the results of an assignment.

Assignment Results

Mr. Robert Abrahms
FSC High School

Math

Total Students: 25

Assignment: Reports
Category: Test
Term: 1
Date: 06/14/2005
Points: 50 (50 questions)

Student	ID	Points	(%)	Attempts	Start Time	Duration
Alexander Aber	104681655	45	(90%)	1	06/14 2:38pm	0 min., 18 sec.
Andy Baba	656526865	38	(76%)	1	06/14 2:38pm	0 min., 19 sec.
Norman Boehl	379044498	35	(70%)	1	06/14 2:39pm	0 min., 21 sec.
Manuel Campag	218031585	43	(86%)	1	06/14 2:39pm	0 min., 20 sec.
Denise Coston	827844811	42	(84%)	1	06/14 2:39pm	0 min., 24 sec.
Wilbert Dowdy	013105510	40	(80%)	1	06/14 2:39pm	0 min., 24 sec.
Chris Farwell	346695870	40	(80%)	1	06/14 2:39pm	0 min., 24 sec.
Michael Gibbons	431603314	40	(80%)	1	06/14 2:39pm	0 min., 24 sec.
Ken Hamlett	018922988	40	(80%)	1	06/14 2:39pm	0 min., 24 sec.
Sherman Henderson	452946293	40	(80%)	1	06/14 2:39pm	0 min., 24 sec.
Jean Hutter	911832166	40	(80%)	1	06/14 2:39pm	0 min., 24 sec.
Detlef Karthaus	203996934	40	(80%)	1	06/14 2:39pm	0 min., 24 sec.
Carl Kretten	114964396	40	(80%)	1	06/14 2:39pm	0 min., 24 sec.
Karsten Loeffle	677962071	40	(80%)	1	06/14 2:39pm	0 min., 24 sec.
Geraldine McDowell	467832015	40	(80%)	1	06/14 2:39pm	0 min., 24 sec.
Randolph Nartler	505954704	40	(80%)	1	06/14 2:39pm	0 min., 24 sec.
Brian O'Neill	653378122	40	(80%)	1	06/14 2:39pm	0 min., 24 sec.
Debbie Pitzer	866631735	40	(80%)	1	06/14 2:39pm	0 min., 24 sec.
Jackie Rhodes	888471963	40	(80%)	1	06/14 2:39pm	0 min., 24 sec.
Esa Saarinen	771354418	40	(80%)	1	06/14 2:39pm	0 min., 24 sec.
Mark Schwartzba	298837995	40	(80%)	1	06/14 2:39pm	0 min., 24 sec.
Alex Spurduti	316036975	40	(80%)	1	06/14 2:39pm	0 min., 24 sec.

Assignment Results

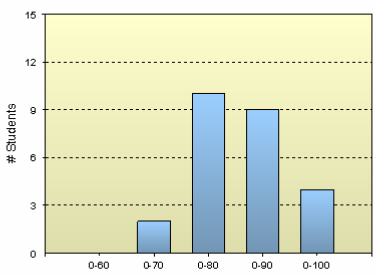
Mr. Robert Abrahms
FSC High School

Math

Total Students: 25

Assignment: Reports
Category: Test
Term: 1
Date: 06/14/2005
Points: 50 (50 questions)

Median	Mean	Low	High	Range	Std. Deviation
80%	79.7%	60%	94%	34%	8.6%



The bar chart shows the frequency distribution of scores. The x-axis represents the score range (0-60, 60-70, 70-80, 80-90, 90-100) and the y-axis represents the number of students. The distribution is as follows:

Score Range	# Students
0-60	0
60-70	2
70-80	10
80-90	9
90-100	4

Frequency Distribution

Class Assignment Summary

The **Class Assignment Summary** report provides the average for each student for all assignments or for a particular category (i.e., tests, quizzes, etc.) of assignments. You can summarize the data for all terms or one term. For example, you can create a report that shows each student's average for all tests in the first term.

Over time, the **Class Assignment Report** provides useful data to help you assess the performance of your class as a whole. From this information, you might be better equipped to assess the effectiveness of your teaching strategies and the associated assignments as they relate to the learning objectives/standards for the class.

Note: In the **Class Assignment Summary** report, the shaded area (▬) shows the median performance range for the class and the diamond (◆) shows the exact student average.

Class Assignment Summary										
Mr. Robert Abrahms FSC High School										
Total Students: 25										
Math										
Category:	All									
Term:	All									
Student	ID	Average	Points	0%	50%	100%	Term 1	Term 2	Term 3	Term 4
Alexander Aber	104681655	83.7%	791/945	▬	◆	▬	82.6%	84.3%	84.3%	--
Andy Baba	656526865	76.3%	721/945	▬	◆	▬	75.4%	72.5%	80%	--
Norman Boehl	379044498	78.8%	745/945	▬	◆	▬	86.4%	67.5%	79.7%	--
Manuel Campag	218031585	87.1%	823.5/945	▬	◆	▬	90.6%	81.6%	87.8%	--
Denise Coston	827844811	76.6%	724/945	▬	◆	▬	74.2%	76.1%	79.4%	--
Wilbert Dowdy	013105510	90.3%	853.5/945	▬	◆	▬	89.4%	85.1%	95.1%	--
Chris Farwell	346695870	78.6%	743/945	▬	◆	▬	74.2%	76.5%	84.6%	--
Michael Gibbons	431603314	86.5%	817/945	▬	◆	▬	88.7%	85.1%	85.2%	--
Ken Hamlett	018922988	76.3%	721/945	▬	◆	▬	76.2%	73.3%	78.6%	--
Sherman Henderson	452946293	80.1%	757/945	▬	◆	▬	79.7%	80.4%	80.3%	--
Jean Hutter	911832166	81%	765/945	▬	◆	▬	85.5%	81.2%	76.2%	--
Detlef Karthaus	203996934	77.1%	729/945	▬	◆	▬	69.9%	79.6%	82.6%	--
Carl Kretten	114964396	82.2%	777/945	▬	◆	▬	82.3%	81.6%	82.6%	--
Karsten Loeffle	677962071	79%	747/945	▬	◆	▬	83.2%	72.2%	80%	--
Geraldine McDowell	467832015	81.5%	770/945	▬	◆	▬	87%	72.2%	82.9%	--
Randolph Narlier	605954704	78.8%	745/945	▬	◆	▬	77.1%	81.6%	78.6%	--
Brian O'Neill	653378122	83.4%	788/945	▬	◆	▬	83.2%	78.4%	87.2%	--

Open-Ended Responses Worksheet

The **Open-Ended Responses Worksheet** report allows you to score the open-ended questions that your students complete as part of an online test. Follow these steps to score open-ended questions and enter the scores into the **ExamView Test Manager**.

1. After all of your students finish an online test, use the option to get the results into the **ExamView Test Manager**. This process reads all of the student responses for the assignment including the open-ended questions (essay, short answer, etc.).
2. Print the **Open-Ended Responses Worksheet**. The report includes the open-ended responses for each student and space for you to write the points earned for each question.
3. After you complete the worksheet, use the **Edit Scores** option to enter the results into the program.

You can use the **Open-Ended Responses Worksheet** report to work away from your computer. You can score open-ended questions anywhere and then enter the scores into the **ExamView Test Manager** at a convenient time.

Open-Ended Responses Worksheet			
Mr. Robert Abrahms FSC High School			
Math			Total Students: 25
Assignment:	Chapter 1 - Introduction		
Category:	Test		
Term:	1		
Date:	06/14/2005		
Points:	50 (50 questions)		
Item #	Points Possible	Points Earned	Response
Alexander Aber			
46:PR	1	_____	1.8
47:PR	1	_____	72
48:PR	1	_____	226.2
49:PR	1	_____	301.6
50:PR	1	_____	9
Andy Baba			
46:PR	1	_____	1.8
47:PR	1	_____	72
48:PR	1	_____	226.2
49:PR	1	_____	301.6
50:PR	1	_____	9
Norman Boehl			
46:PR	1	_____	1.8
47:PR	1	_____	72
48:PR	1	_____	226.2
49:PR	1	_____	301.6

Item Analysis Summary

The **Item Analysis Summary** report provides the percent of the class that answered each question correctly. For multiple choice questions, the report also shows the percent of the class that selected each response (or answer choice).

You can use the response analysis in the **Item Analysis Summary** to identify areas in which you may want to focus a re-teaching activity so that you can better address particular learning objectives/standards. For questions with a high, correct response rate, you can use the information to validate the question. On the other hand, if students consistently answered a question incorrectly, you can assess whether this points to a problem with the question. For example, suppose students answered a question overwhelmingly (e.g., 60%) with an incorrect response. This may have occurred because you recorded an incorrect answer for the question, the question was unclear, or you did not cover the information adequately in class.

If, in a particular multiple choice question, the student responses are evenly distributed for all of the answer choices, the analysis may indicate that students randomly selected a response. If, in another multiple choice question, students selected the correct response at 65% followed by 30% for the next response. This response analysis data may point to a common mistake students made in determining the correct answer for the question. On a question-by-question basis, you should look for similar patterns; such information can provide insight into your students' understanding of the material covered by the assignment.

Note: In the **Item Analysis Summary** report, an indicator (>) appears to the left of a question that more than 30% of the students in the class answered incorrectly.

Item Analysis Summary						
Mr. Robert Abrahms FSC High School						
Math				Total Students: 25		
Assignment: Chapter 1 - Introduction						
Category: Test						
Term: 1						
Date: 06/14/2005						
Points: 50 (50 questions)						
Question	Class Average	A	B	C	D	--
<i>Multiple Choice</i>						
1	92%	8%	92%	0%	0%	0%
2	84%	12%	4%	84%	0%	0%
3	80%	0%	80%	20%	0%	0%
> 4	68%	4%	0%	28%	68%	0%
5	96%	4%	96%	0%	0%	0%
6	96%	0%	4%	0%	96%	0%
7	88%	0%	88%	4%	8%	0%
8	100%	0%	100%	0%	0%	0%
9	96%	4%	0%	0%	96%	0%
10	100%	0%	0%	0%	100%	0%
11	100%	0%	0%	0%	100%	0%
12	88%	0%	4%	88%	8%	0%
13	96%	0%	96%	4%	0%	0%
14	100%	0%	0%	0%	100%	0%
15	88%	12%	0%	88%	0%	0%
16	100%	0%	0%	0%	100%	0%
17	88%	4%	88%	0%	8%	0%

Class Roster

The Class Roster report generates an alphabetical list of the students in a particular class. You can create a filter to include all of the class or selected students. Additionally, you can customize the Class Roster report by choosing to include the supplemental student information (i.e., ID/alias, password, grade, date of birth, sociological/economic, etc.).



You might use this report to have a printed record of the ID/alias and password for each of the students in each class. You could then conveniently reference this printout if a student forgets their ID, alias, or password. However, to maintain privacy of the IDs, you would want to keep the printout in a safe place where students and others could not access the information.

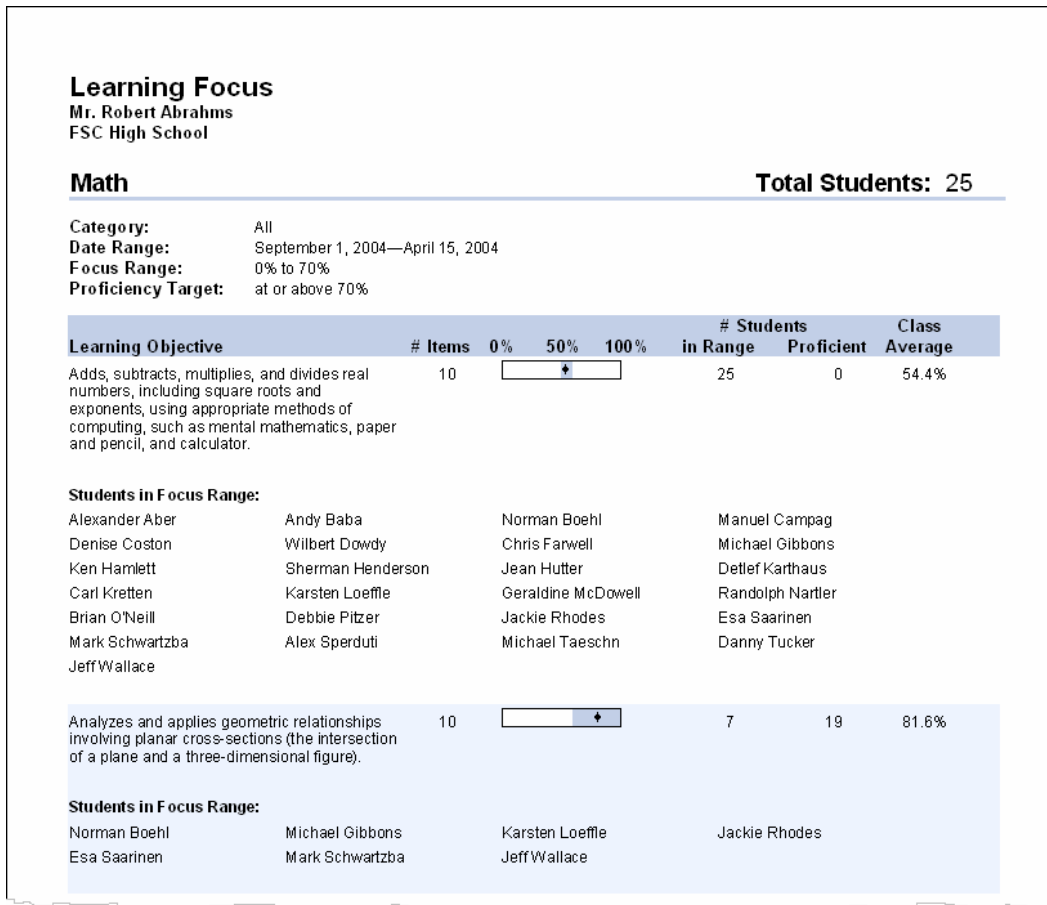
Class Roster Mr. Robert Abrahms FSC High School								
Math								Total Students: 25
Student	ID/ Alias	Password	Grade	Date of Birth	Sociological/ Economic	Race/ Ethnicity	Other	Custom
Alexander Aber	104681655 Aber	Aber						
Andy Baba	656526865 Baba	Baba						
Norman Boehl	379044498 Boehl	Boehl						
Manuel Campag	218031585 Campag	Campag						
Denise Coston	827844811 Coston	Coston						
Wilbert Dowdy	013105510 Dowdy	Dowdy						
Chris Farwell	346695870 Farwell	Farwell						
Michael Gibbons	431603314 Gibbons	Gibbons						
Ken Hamlett	018922988 Hamlett	Hamlett						
Sherman Henderson	452946293 Henderson	Henderson						
Jean Hutter	911832166 Hutter	Hutter						
Detlef Karthaus	203996934 Karthaus	Karthaus						
Carl Kretten	114964396 Kretten	Kretten						
Karsten Loeffle	677962071 Loeffle	Loeffle						
Geraldine McDowell	467832015 McDowell	McDowell						

Learning Focus

The Learning Focus report provides a wealth of information to help you identify areas where your class (as a whole) needs to focus their learning efforts. To use this report effectively, the assignments you create must consistently include data for one or more of the following fields: learning objective, local standard, state standard, or national standard.

One of the key advantages for using the ExamView Test Manager is that you can easily gather performance data over multiple assessments. The report shows the number of items for each standard. That way, you can gauge whether a standard was adequately covered. You can select one or more assignments by category or by date. You must also identify a focus range (e.g., 0% - 70%). The program produces a report that shows each standard (or learning objective), the number of questions assessed for that standard, class average, and how many students are in the focus range.

Note: The shaded area () shows the performance for the median 70% of the students in your class. For example, if there are 20 students in your class, the top 3 scores (15%) and lowest 3 scores (15%) would not be included. The range of scores represents 14 students or 70% of the class. The diamond () shows the actual class average. Use the graphs to see how the majority of students performed. If the area is relatively short, students' scores were similar.



Performance Summary

The **Performance Summary** report provides a summary of your class' performance for all class assignments in a category over a specified date range. The **Performance Summary** report lists a learning objective/standard, the number of items (i.e., questions) that assess that objective/standard, and the proficiency level that the class as a whole has attained.

To use the **Performance Summary** report effectively, you must consistently include question information for one or more of the following fields in each of the items you create: learning objective, local standard, state standard, or national standard. (Many publishers include this information for the questions they provide.)

You can customize the **Performance Summary** report to generate the performance data that best meet your needs. You can select the date range for the class assignments, and you can set an appropriate proficiency target (e.g., 70% and above) for the class assignments at a particular time in the term. As an example, you might set the proficiency target at 70% with the first class assignment that covers a particular learning objective/standard. Then, on a subsequent class assignment on the same learning objectives/standards, you might set the proficiency target at 80%.

Performance Summary

Mr. Robert Abrahms
FSC High School

Math **Total Students: 25**

Category: All
Date Range: September 1, 2004—April 15, 2004
Proficiency Target: at or above 70%

Learning Objective	# Items	0%	50%	100%	# Students Proficient	Class Average
Adds, subtracts, multiplies, and divides real numbers, including square roots and exponents, using appropriate methods of computing, such as mental mathematics, paper and pencil, and calculator.	10	<input type="checkbox"/>	<input type="checkbox"/>	<input type="checkbox"/>	0	54.4%
Students Proficient: (None)						
Analyzes and applies geometric relationships involving planar cross-sections (the intersection of a plane and a three-dimensional figure).	10	<input type="checkbox"/>	<input checked="" type="checkbox"/>	<input type="checkbox"/>	19	81.6%
Students Proficient:						
Alexander Aber	Andy Baba	Manuel Campag	Denise Coston			
Wilbert Dowdy	Chris Farwell	Michael Gibbons	Ken Hamlett			
Sherman Henderson	Jean Hutter	Detlef Karthaus	Carl Kretten			
Geraldine McDowell	Randolph Nartler	Brian O'Neill	Debbie Pitzer			
Alex Sperduti	Michael Taeschn	Danny Tucker				

Class Performance Progress Chart

The **Class Performance Progress Chart** report shows at a glance how each student is performing on each of the learning objectives/standards for all assignments in a category over a specified date range. The report lists a learning objective/standard, the number of items (i.e., questions) that assess that learning objective/standard, and a proficiency indicator for each of the students.

To use the **Class Performance Progress Chart** report effectively, you must consistently include question information for one or more of the following fields in each of the items you create: learning objective, local standard, state standard, or national standard. (Many publishers include this information for the questions they provide.)

To customize the **Class Performance Progress Chart**, you can set the category of assignments, the date range of the class assignments, and the proficiency level based on your performance criteria. The report shows one of three icons () to indicate each student's performance on each of the learning objectives/standards.

Performance Progress Chart										
Mr. Robert Abrahms FSC High School										
Math										Total Students: 25
Category: All Date Range: September 1, 2004—April 15, 2004 Proficiency Levels: <input type="radio"/> 0% - 70% <input type="radio"/> 70% - 85% <input checked="" type="radio"/> 85% - 100										
Learning Objective	# Items	Class Average	Alexander Aber	Andy Baba	Horman Boehl	Manuel Campag	Denise Coston	Wilbert Dowdy	Chris Farwell	
Adds, subtracts, multiplies, and divides real numbers, including square roots and exponents, using appropriate methods of computing, such as mental mathematics, paper and pencil, and calculator.	10	<input type="radio"/>	<input type="radio"/>	<input type="radio"/>	<input type="radio"/>	<input type="radio"/>	<input type="radio"/>	<input type="radio"/>	<input type="radio"/>	<input type="radio"/>
Analyzes and applies geometric relationships involving planar cross-sections (the intersection of a plane and a three-dimensional figure).	10	<input checked="" type="radio"/>	<input checked="" type="radio"/>	<input checked="" type="radio"/>	<input type="radio"/>	<input checked="" type="radio"/>	<input checked="" type="radio"/>	<input checked="" type="radio"/>	<input checked="" type="radio"/>	<input checked="" type="radio"/>
Designs and performs real-world statistical experiments that involve more than one variable, then analyzes results and reports findings.	10	<input checked="" type="radio"/>	<input checked="" type="radio"/>	<input checked="" type="radio"/>	<input type="radio"/>	<input checked="" type="radio"/>	<input checked="" type="radio"/>	<input checked="" type="radio"/>	<input checked="" type="radio"/>	<input checked="" type="radio"/>
Interprets data that have been collected, organized, and displayed in charts, tables, and plots.	10	<input checked="" type="radio"/>	<input checked="" type="radio"/>	<input type="radio"/>	<input type="radio"/>	<input checked="" type="radio"/>	<input checked="" type="radio"/>	<input checked="" type="radio"/>	<input checked="" type="radio"/>	<input checked="" type="radio"/>
Understands that numbers can be represented in a variety of equivalent forms, including integers, fractions, decimals, percents, scientific notation, exponents, radicals, absolute value, and logarithms.	10	<input checked="" type="radio"/>	<input checked="" type="radio"/>	<input checked="" type="radio"/>	<input type="radio"/>	<input checked="" type="radio"/>	<input checked="" type="radio"/>	<input checked="" type="radio"/>	<input checked="" type="radio"/>	<input checked="" type="radio"/>

Student Reports

The ExamView Test Manager provides five reports that highlight each student's individual performance for one or more assignments. This section includes a brief overview and a sample of each student report.

Assignment Results

The **Assignment Results** report reflects a student's performance for one assignment. The report includes the following information: assignment average, points earned for each question, and the student's response for each question.

If you select the option for performance results for learning objectives/standards, the **Assignment Results** report also includes each learning objective and the following performance data for that learning objective/standard: the average, points earned, the proficiency level, and the specific questions in the class assignment. To use the **Assignment Results** report effectively, you must consistently include question information for one or more of the following fields in each of the items you create: learning objective, local standard, state standard, or national standard. (Many publishers include this information for the questions they provide.)

You can use this report to identify each student's proficiency level for each of the learning objectives/standards for each assignment. This information may also help you to identify areas in which a student may need remedial work.

Assignment Results
Mr. Robert Abrahms
FSC High School

Alexander Aber **Average: 90%** (45/50)

Assignment: Chapter 1 - Introduction
Category: Test
Term: 1
Date: 06/14/2005
Points: 50 (50 questions)

Question	Points	Your Response
Multiple Choice		
1	1/1	B
2	1/1	C
3	1/1	B
4	1/1	D
5	1/1	B
<hr/>		
6	1/1	D
7	1/1	B
8	1/1	B
9	1/1	D
10	1/1	D
<hr/>		
11	1/1	D
12	1/1	C
13	1/1	B
14	1/1	D
15	1/1	C
<hr/>		
16	1/1	D
17	1/1	B
18	1/1	D
19	1/1	D

Assignment Results
Mr. Robert Abrahms
FSC High School

Alexander Aber **Average: 90%** (45/50)

Assignment: Chapter 1 - Introduction
Category: Test
Term: 1
Date: 06/14/2005
Points: 50 (50 questions)

Learning Objective	Average	Points	0%	50%	100%	Questions
Adds, subtracts, multiplies, and divides real numbers, including square roots and exponents, using appropriate methods of computing, such as mental mathematics, paper and pencil, and calculator.	60%	6/10	<div style="width: 60%;"></div>			MC:40, 41, 42, 43, 44, 45; PR:47, 48, 49, 50
Analyzes and applies geometric relationships involving planar cross-sections (the intersection of a plane and a three-dimensional figure).	100%	10/10	<div style="width: 100%;"></div>			MC:20, 21, 22, 23, 24, 25, 26, 27, 28, 29
Designs and performs real-world statistical experiments that involve more than one variable, then analyzes results and reports findings.	100%	10/10	<div style="width: 100%;"></div>			MC:5, 6, 7, 8, 9, 15, 16, 17, 18, 19
Interprets data that have been collected, organized, and displayed in charts, tables, and plots.	90%	9/10	<div style="width: 90%;"></div>			MC:1, 2, 3, 4, 10, 11, 12, 13, 14; PR:46
Understands that numbers can be represented in a variety of equivalent forms, including integers, fractions, decimals, percents, scientific notation, exponents, radicals, absolute value, and logarithms.	100%	10/10	<div style="width: 100%;"></div>			MC:30, 31, 32, 33, 34, 35, 36, 37, 38, 39

Assignment Review

The **Assignment Review** report provides a tool to help your students understand the mistakes they made on an assignment. For each question answered incorrectly, the report shows the following: points earned, student's response, correct answer, explanation, study tip, and focus area (depending on the information available).

To use the **Assignment Review** report effectively, you must consistently include extra question information for each of the items you create. (Many publishers include this information for the questions they provide.) For example, a study tip such as *Refer to pp. 23-25* is the information in the **Reference** field for a question. Students, in this example, could use the report to refer to the specified pages in their textbook as they review the questions that they answered incorrectly.

Students can use the **Assignment Review** report to review the completed assignments and to learn from their mistakes.

Assignment Review

Mr. Robert Abrahms
FSC High School
Math

Alexander Aber **Score: 91%** (45.5/50)

Assignment: Chapter 1
Category: Test
Term: 1
Date: 07/08/2005
Points: 50 (50 questions)

Based on your results for this assignment, review the study tips below.

Question	Review
Multiple Choice	
4 (0/1)	Your Response: C Correct Answer: D Rationale: Saturn has 19 satellites; Neptune has 8. Reference: Science
Multiple Choice	
27 (0/1)	Your Response: A Correct Answer: C Rationale: The cross-section is a rectangle with length 19 feet and width $2 \times 8.6 = 17.2$ feet. $A = l \times w$ $A = 19(17.2)$ $A \approx 326.8 \text{ cm}^2$ Reference: Mathematics

Student Progress Report

The **Student Progress Report** shows a student's progress for one or more terms. The report organizes the results by term and provides the following information for each assignment: assignment description, date assigned, category, points earned, percent achieved, and class average. A summary shows the term average by listing the total points earned out of the total possible points, the equivalent percent, and the class average.

You can use the **Student Progress Report** to depict the student's progress over time.

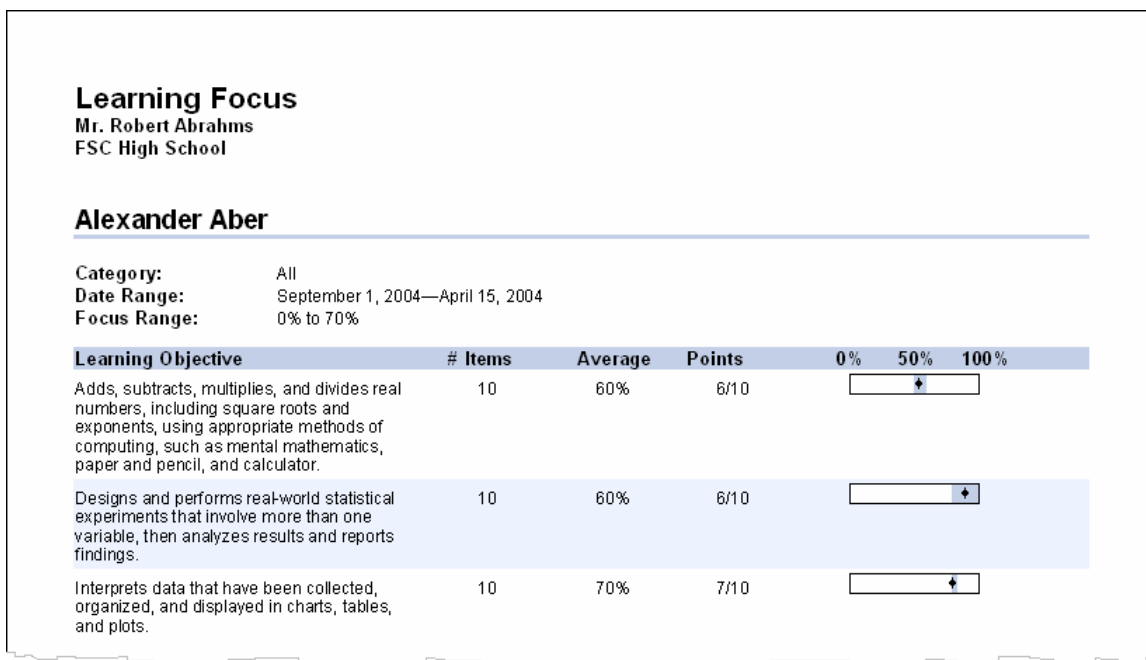
Student Progress Report					
Mr. Robert Abrahms FSC High School					
Alexander Aber			Overall Average: 86.9%		
Category:	All				
Term:	All				
Assignment	Date	Category	Points	Percent	Class Average
<i>Term 1</i>					
Math G6 Exam	06/08/2005	Exam	50/50	100%	87.5%
Math G6 Quiz	06/09/2005	Quiz	9/10	90%	66.8%
Math G6 Test	06/10/2005	Test	20/20	100%	76.4%
Reading G3 Exam	06/11/2005	Exam	100/100	100%	85%
Reading G3 Quiz	06/12/2005	Pop Quiz	15/15	100%	73.9%
Reading G3 Test	06/13/2005	Test	38/40	95%	80.8%
Reading G9 Exam	06/14/2005	Test	78/100	78%	80.6%
Reading G9 Quiz	06/15/2005	Homework	8/10	80%	78.4%
Term Average:			318/345	92.2%	81.9%


Learning Focus

The Learning Focus report identifies areas where a student needs to focus his/her learning efforts. Based on a proficiency level you set, the report lists the learning objective/standards that a student has not mastered. For each of the learning objectives/standards the student has not yet mastered, the Learning Focus report lists the learning objective/standard, the associated number of items, the points earned on items, and the proficiency level that the student has attained.

You can customize the Learning Focus report to generate the performance data that best meet your needs. You can select one or more class assignments by category and the date range for the assignments. You can set an appropriate focus range (e.g., 0% - 70%) for the class assignments at a particular time in the term. As an example, you might set the focus range at 0% to 70% with the first class assignment that covers a particular learning objective/standard. Then, on a subsequent class assignment on the same learning objectives/standards, you might set the focus range to 0% to 80%.

You can use the Learning Focus report to help a student know exactly what to study in order to attain mastery level on the identified learning objectives/standards.



Note: The shaded area () shows the performance for the median 70% of the students in a class. For example, if there are 20 students in a class, the top 3 scores (15%) and lowest 3 scores (15%) would not be included. The range of scores for 14 students (70%) would be represented. The diamond (◆) shows your student's actual performance. Use the graphs to see how a student performed in relation to his/her class. For example, if the diamond appears near or past the right edge of the shaded area, the student's performance is in the upper range for the class. If the shaded area is relatively short, students' scores were similar.

Performance Summary

The **Performance Summary** report shows at a glance how a student is performing on all learning objectives/standards for all assignments in a category over a specified date range. The **Performance Summary** report lists each learning objective/standard, the number of items (i.e., questions) that assess each learning objective/standard, a proficiency score for each learning objective/standard, whether the student is proficient based on the proficiency target, and the average for each learning objective/standard.

To use the **Performance Summary** report effectively, you must consistently include question information for one or more of the following fields in each of the items you create: learning objective, local standard, state standard, or national standard. (Many publishers include this information for the questions they provide.)

You can use the **Performance Summary** report to identify specific learning objectives/standards where the student needs to focus his/her learning efforts.

Performance Summary						
Mr. Robert Abrahms FSC High School						
Alexander Aber						
Category:	All					
Date Range:	September 1, 2004—April 15, 2004					
Proficiency Target:	at or above 70%					
Learning Objective	# Items	0%	50%	100%	Proficient?	Average
Adds, subtracts, multiplies, and divides real numbers, including square roots and exponents, using appropriate methods of computing, such as mental mathematics, paper and pencil, and calculator.	10				No	60%
Analyzes and applies geometric relationships involving planar cross-sections (the intersection of a plane and a three-dimensional figure).	10				Yes	100%
Designs and performs real-world statistical experiments that involve more than one variable, then analyzes results and reports findings.	10				No	60%
Interprets data that have been collected, organized, and displayed in charts, tables, and plots.	10				Yes	70%
Understands that numbers can be represented in a variety of equivalent forms, including integers, fractions, decimals, percents, scientific notation, exponents, radicals, absolute value, and logarithms.	10				Yes	100%

Print a Report

After ExamView Test Manager prepares a report, you can print the report in just a few simple steps. When you are ready to print a report, follow these general instructions. Numerous report options allow you to customize the information that appears on the printout. For detailed instructions and options, see the corresponding help topic in the application.

To print a report...

1. Click the **Report** menu and choose a report.
2. Select the report options.
3. Click the **OK** button to display the report.
4. While viewing the report, click the **Print** button to send the report to the printer.

You can set a filter to print only selected students based on various criteria.

Export Results to a Gradebook or Another Application

The ExamView Test Manager lets you export the students' results data for an assignment. You can export summary data (e.g., student name, ID, and percentage) or detailed data (e.g., student information, all responses, answer key, etc.). With the export option you can export student results in order to import them into your gradebook or a spreadsheet. For more advanced users, you can export the results for use with a student information system.

To export the results for an assignment...

1. Select an assignment.
2. Choose **Export** and then select the **Current Assignment as Text** or **Current Assignment as XML** option.

Use the **as Text** option to export results for use with a gradebook or a spreadsheet program. Use the **as XML** option to export results to a student information system.

3. Set the options (if necessary) and then enter a file name.

Note: You can also use the **Copy All Class Records** option in the **Edit** menu to copy all of the information in the work area. Then, you can paste that information into a spreadsheet document.

PUBLISH AN INTERNET (HTML) TEST TO YOUR OWN WEBSITE

Using the **ExamView Test Generator**, you can publish any test as an HTML document. You can choose to create a self-grading study guide or a test that will send student results to you via email. After you publish the test, you must copy the files to your website so that your students can access the test.

Publishing an HTML test is a quick way to create an online test. However, these disadvantages exist: (1) you must have your own website and know how to upload files; (2) there are no settings to control when and who may access a test; (3) results are not stored in a database for access at a later time; and (4) getting results via email can be unreliable due to network settings and spam filters.

The ExamView Test-Hosting Service provides a more robust Internet testing and study solution.


For many situations, the HTML testing features provide an acceptable solution to meet a variety of online testing needs. Review the instructions in this section to learn how to publish an Internet (HTML) test.

Publish an Internet (HTML) Test

Follow the instructions below to set the features for the online test and save it to your hard drive.

To publish an Internet test...



1. Start the **ExamView Test Generator** and create or open a test.
2. Click  or choose **Publish Online Test** from the File menu.
3. Choose the **Save the test as an HTML document to your hard drive** option. Click the **Next** button to display the test options.

Publish Online Test

Use this option to create an HTML study guide or test that you can host on your own website.

Step 3: Choose to publish a study guide or a test.

Publish a study guide

Show Rationale Show Feedback Show Reference

NOTE: If you select the study-guide option, students can compare their responses to the correct answers upon completion of the study guide. Results will NOT be recorded or emailed to you.

Publish a test

Show test score to student

Formal name:

Send results to email address:

NOTE: If you select this option, you will receive a detailed report via email for each student. Students will not be able to review their responses once they submit the test for grading.

Advanced...

Help < Back Next > Cancel

4. Choose to publish a study guide or a test and click the **Next** button.

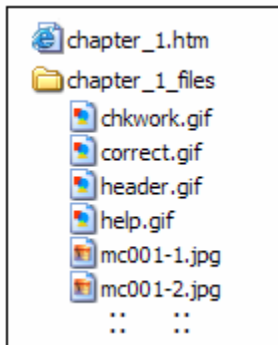
A **study guide** is a self-grading test. You can choose to show the rationale, feedback, and reference if your test includes this information. Doing so makes the study guide a true learning experience rather than just telling the students that an answer is right or wrong.

Student feedback can include a hyperlink to remedial learning material.

Choosing a **test** allows students to take it online, and you receive a separate results email for each student. You **must** include a valid email address. You also have the option to show a student his/her results after completing a test. The results email will contain the student name and his/her score.

5. Click the **Save** button to save the HTML document and image files to your hard drive.

When you publish an online test, the **ExamView Test Generator** saves an HTML file and all of the supporting images. The images are stored in a folder named similar to the test file.



6. Copy the HTML file and the folder with its contents to your website. Do **not** change anything including the folder name.

Note: If you do not know how to copy files to your website and set a hyperlink, contact your technology support person. The process varies depending on your particular system.

7. Preview the test before your students take it.

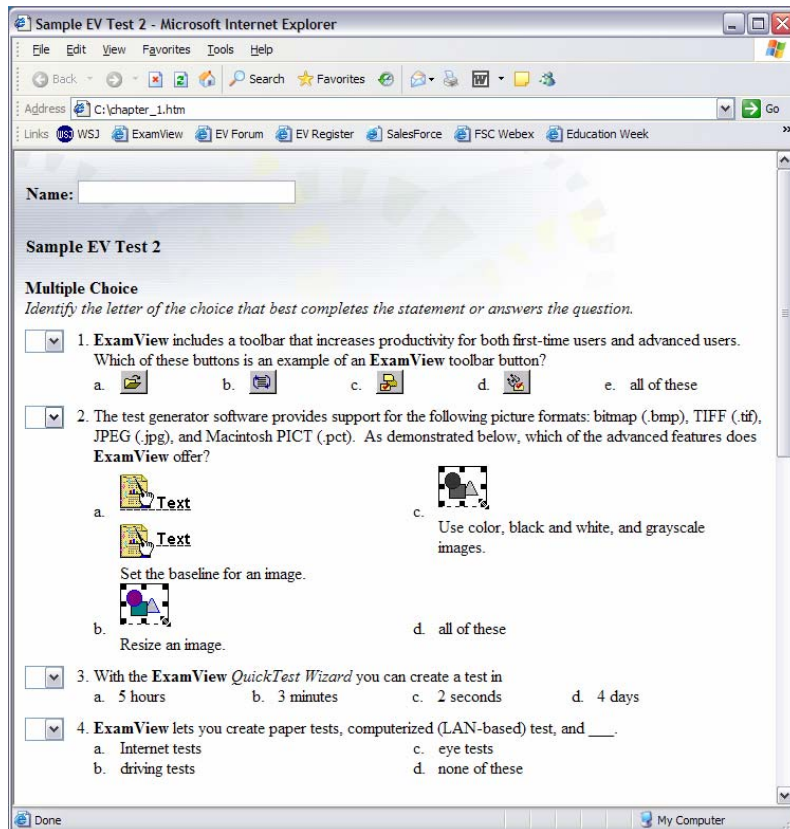
For tests, answer some or all of the questions. Then, click the **Grade & Submit** button and make sure that you receive a results email. It's very easy to enter the wrong email address. Doing so will cause you to not receive any emails.

Take an Internet (HTML) Test

After you publish an HTML test and copy it to your website, your students can take the test anytime from anywhere they can access the Internet. You must provide your students with the website address (URL) for them to access the test.

To take an Internet test...

1. Start your web browser.
2. Enter the website address to go directly to the test or to a page with a hyperlink to the test.



3. When the test appears, enter your name (and email/ID if requested).
4. Complete the test.
5. When you finish your online work, click the **Check Your Work** button for a study guide or the **Grade & Submit** button for a test.

Note: For a test, you will receive a results email for each student shortly after the student clicks the **Grade & Submit** button.

EXPORT TESTS TO WEBCT AND BLACKBOARD

The ExamView Assessment Suite works with both the WebCT and Blackboard course managements systems. You can easily upload a test from the ExamView Test Generator to either one of these applications. Simply open your test or question bank, choose to export it, and a wizard will guide you through the process.



Blackboard

To export a test or question bank...



1. Start the ExamView Test Generator and create or open a test or question bank.
2. Choose **Export** from the **File** menu, and select either **WebCT** or **Blackboard**.
3. Follow the instructions in the wizard to upload the test/question bank.

Be sure to check the FSCreations website for free updates to the export program.

IMPORTANT: For step-by-step instructions, click the **Help** button that appears while you are working with the wizard.

Technical Support

Before seeking technical support, please check the following:

- Is your computer working properly? Try some other software, which you know is working, on the same computer.
- Try the software on another computer.
- Can you repeat the problem? Does the problem occur at the same point each time?

In order to help you as quickly as possible, have the following information available before you contact technical support:

- Version of the software (e.g., 5.1.0) from the start-up splash screen or from the **About ExamView...** screen (accessed from the **Help** menu)
- Brand, model, and configuration of the computer you are using
- System version (Windows XP, Windows 2000, OS X 10.2, etc.)
- The exact wording of any error message

Visit our online support forum (forum.fscreations.com), for quick answers to most product questions. Topics on the forum cover everything from explaining product features to licensing and purchasing options. The active user community also provides useful solutions and product tips on the forum.

If you cannot find a solution to your problem on the forum, contact a technical support representative by telephone or email. FSCreations provides technical support for the **ExamView Assessment Suite Professional Edition**. For the non-Professional Edition, contact your publisher for support. Refer to your publisher's website to obtain the technical support contact information.

Using the ExamView Assessment Suite with Other Applications

Many other products work with the **ExamView Assessment Suite** software and its content. For example, you can deliver a practice test that works with a quiz show program or use the test on a handheld (e.g., Palm or PocketPC). The **ExamView Assessment Suite** also works with several bubble sheet OMR scanners to make grading your tests quick and easy.

For a complete list of the products that work with the **ExamView Assessment Suite**, visit the FSCreations website (www.fscreations.com).