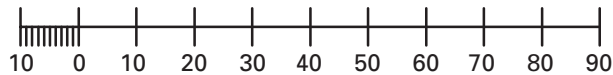
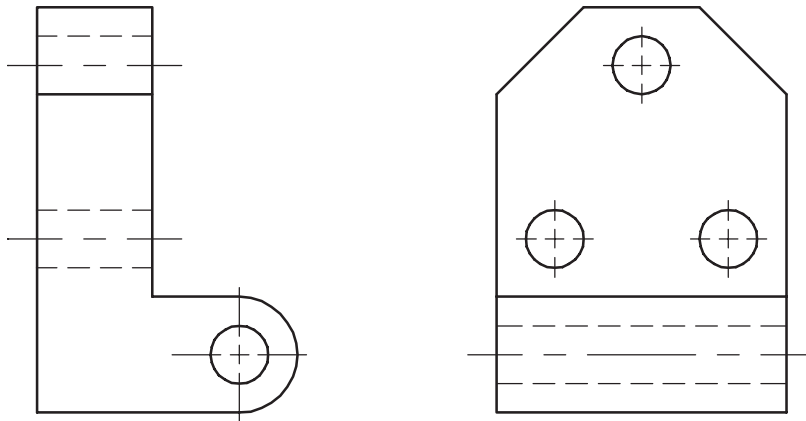


CAD Problem 1

Hinge

Create a multiview drawing of the hinge shown below. Take dimensions from the scale shown. Include all dimensions on the drawing.



METRIC

Autodesk Inventor® Users: Create a model of the hinge. Then create a multiview drawing to meet the problem requirements.

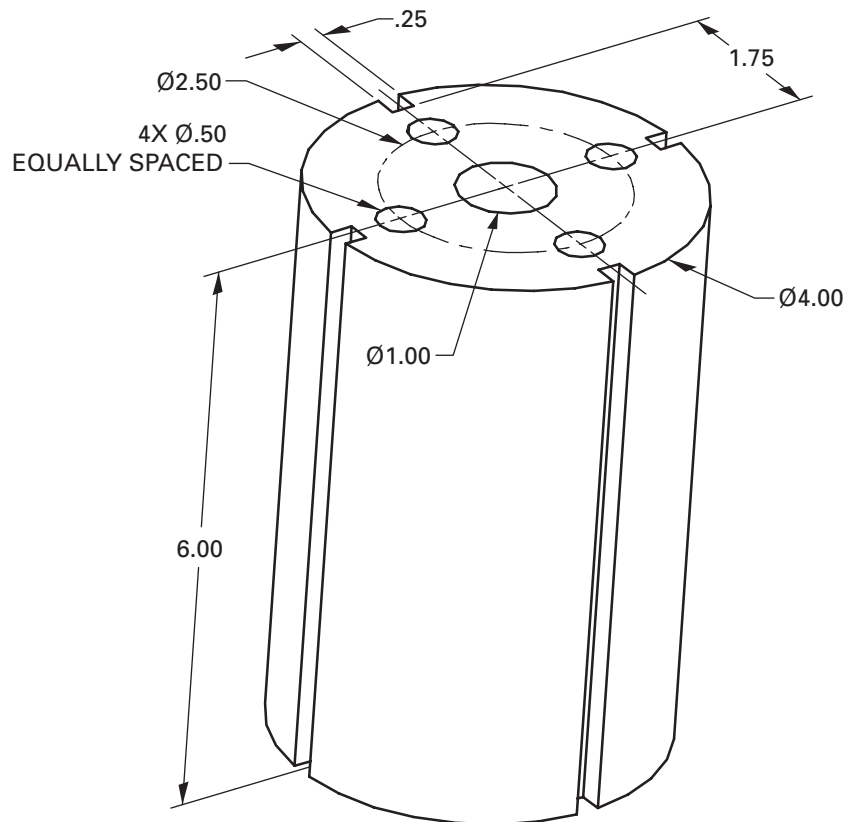
This problem can be used with the following Glencoe textbooks:

Textbook	Chapter
<i>Hands-On AutoCAD</i>	5
<i>Hands-On AutoCAD LT</i>	5
<i>Mechanical Drawing</i>	7
<i>Applying AutoCAD 2006</i>	11
<i>Applying AutoCAD 2005</i>	11
<i>Designing with Inventor 10</i>	8

CAD Problem 2

Pulley

Create a multiview drawing of the pulley. Include all dimensions, hidden lines, and centerlines on the drawing.



Autodesk Inventor® Users: Create a model of the pulley. Then create a multiview drawing to meet the problem requirements.

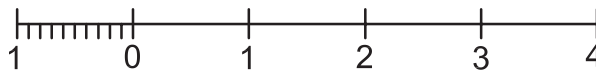
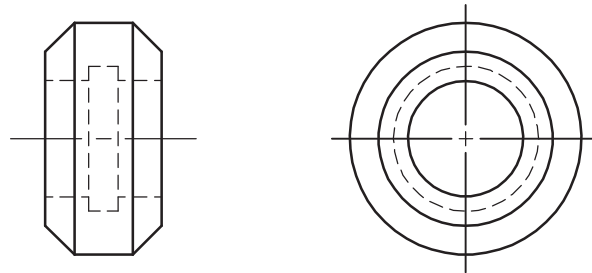
This problem can be used with the following Glencoe textbooks:

Textbook	Chapter
<i>Hands-On AutoCAD</i>	5, 6
<i>Hands-On AutoCAD LT</i>	5, 6
<i>Mechanical Drawing</i>	7
<i>Applying AutoCAD 2006</i>	26–28
<i>Applying AutoCAD 2005</i>	25–27
<i>Designing with Inventor 10</i>	8

CAD Problem 3

Section Drawing

Create a full section drawing using the scale shown. Add the appropriate dimensions if requested by your instructor.



DECIMAL INCH

Autodesk Inventor® Users: Create a model of the object first. Then create a multiview drawing with a full section view to meet the problem requirements.

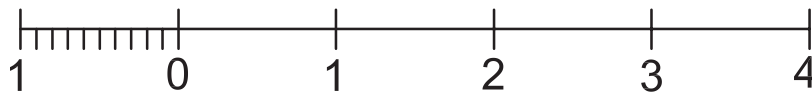
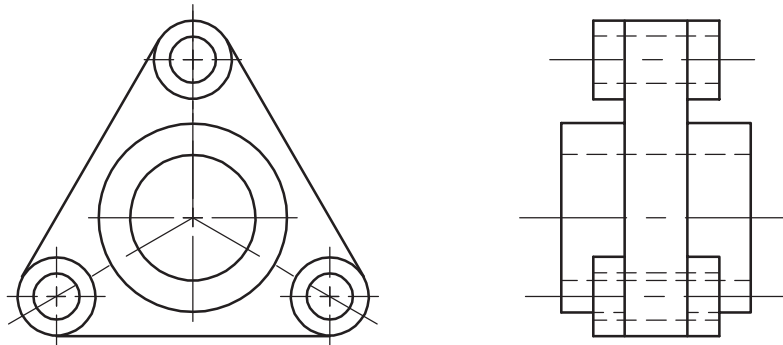
This problem can be used with the following Glencoe textbooks:

Textbook	Chapter
<i>Hands-On AutoCAD</i>	5
<i>Hands-On AutoCAD LT</i>	5
<i>Mechanical Drawing</i>	8
<i>Applying AutoCAD 2006</i>	44
<i>Applying AutoCAD 2005</i>	42
<i>Designing with Inventor 10</i>	10

CAD Problem 4

Offset Section

Taking dimensions from the printed scale, create a two-view drawing of the object shown below. Draw both views and make an offset section through two of the outer holes.



DECIMAL INCH

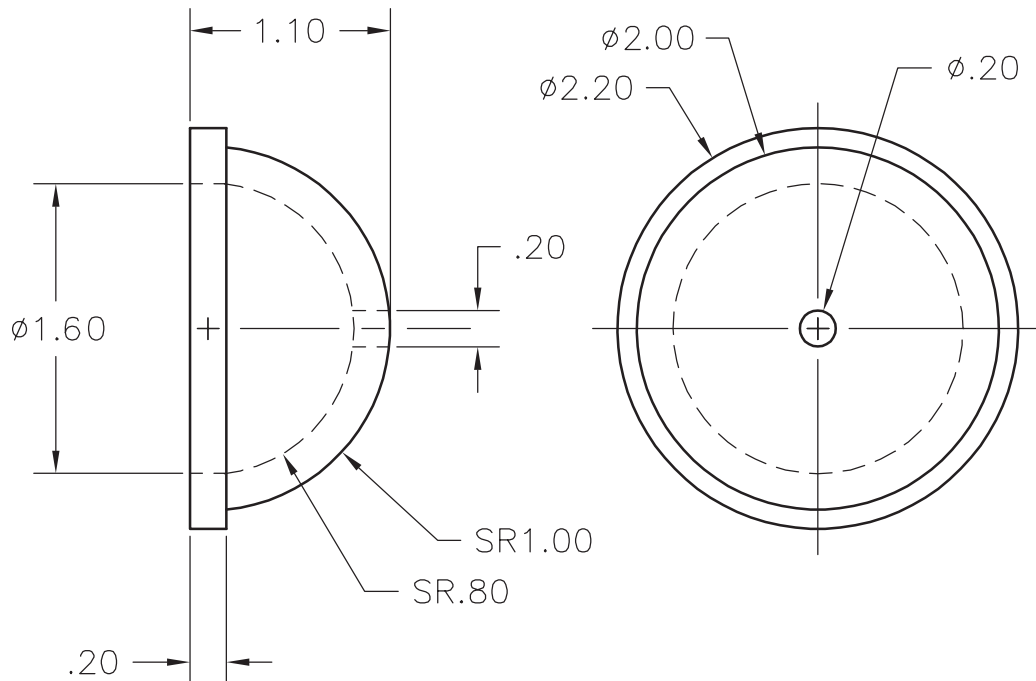
This problem can be used with the following Glencoe textbooks:

Textbook	Chapter
<i>Hands-On AutoCAD</i>	5
<i>Hands-On AutoCAD LT</i>	5
<i>Mechanical Drawing</i>	8
<i>Applying AutoCAD 2006</i>	44
<i>Applying AutoCAD 2005</i>	42

CAD Problem 5

Cover

Create a two-view drawing of the cover shown below. Show a full section as one of your views.



Autodesk Inventor® Users: Create a model of the cover. Then create a two-view drawing with a full section to meet the problem requirements.

This problem can be used with the following Glencoe textbooks:

Textbook	Chapter
<i>Hands-On AutoCAD</i>	5
<i>Hands-On AutoCAD LT</i>	5
<i>Mechanical Drawing</i>	8
<i>Applying AutoCAD 2006</i>	44
<i>Applying AutoCAD 2005</i>	42
<i>Designing with Inventor 10</i>	10