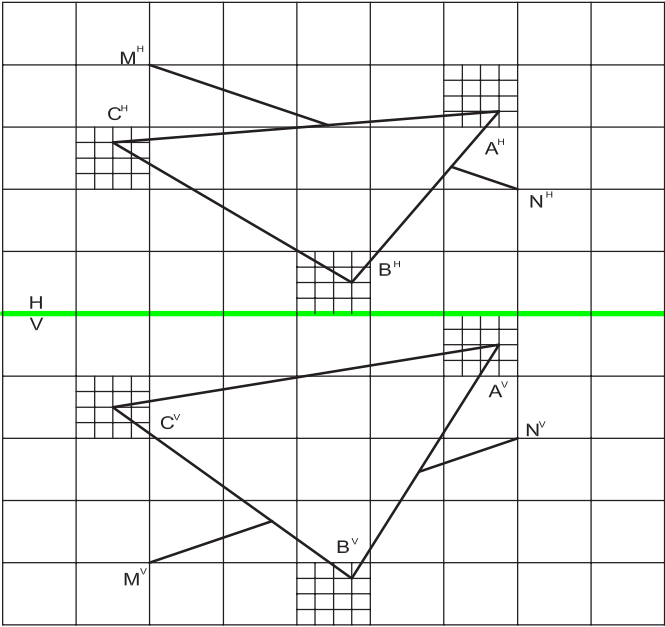


CAD Problem 1

Descriptive Geometry

Determine if line MN pierces plane ABC. The larger squares represent 50" and the smaller squares represent .125".



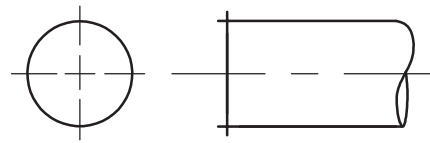
This problem can be used with the following Glencoe textbook:

Textbook	Chapter
<i>Mechanical Drawing</i>	10

CAD Problem 2

Threaded Rod

Use dividers and/or a scale to take dimensions from the scale below. Draw a schematic representation of the threaded rod shown using board or CAD techniques.



.25-20UNC-2A



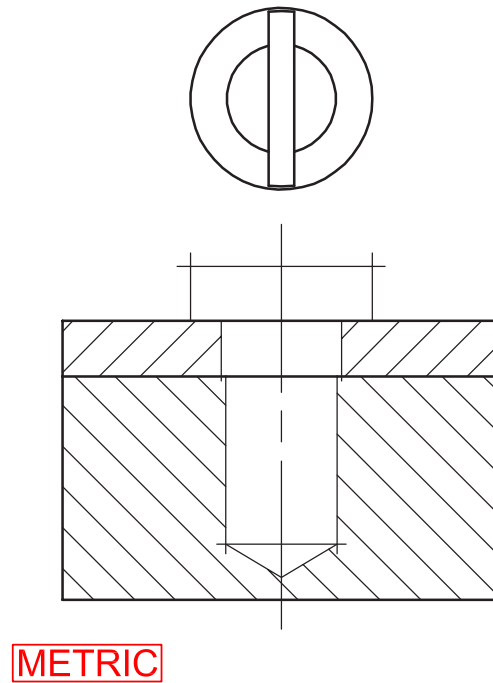
This problem can be used with the following Glencoe textbooks:

Textbook	Chapter
<i>Hands-On AutoCAD</i>	12
<i>Hands-On AutoCAD LT</i>	12
<i>Mechanical Drawing</i>	11

CAD Problem 3

Pan-Head Screw

Draw a sectional view of the two plates and the M10 pan-head screw (20 mm long).
Approximate dimensions not given.



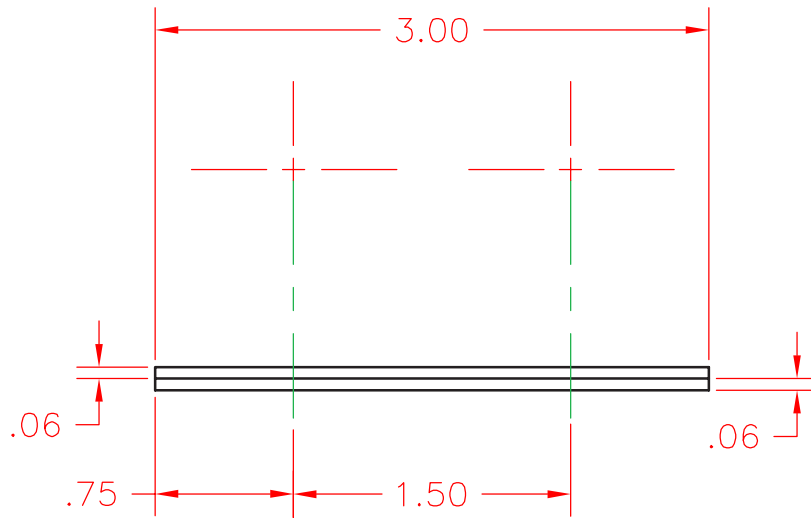
This problem can be used with the following Glencoe textbooks:

Textbook	Chapter
<i>Hands-On AutoCAD</i>	12
<i>Hands-On AutoCAD LT</i>	12
<i>Mechanical Drawing</i>	11

CAD Problem 4

Button-Head Rivets

Draw the view shown. Add two $\frac{1}{2}$ " button-head rivets on the green centerlines. Do not be concerned with length, as long as they extend past the two plates shown. Show the heads as specified and draw a top view of each on the center mark above the view.



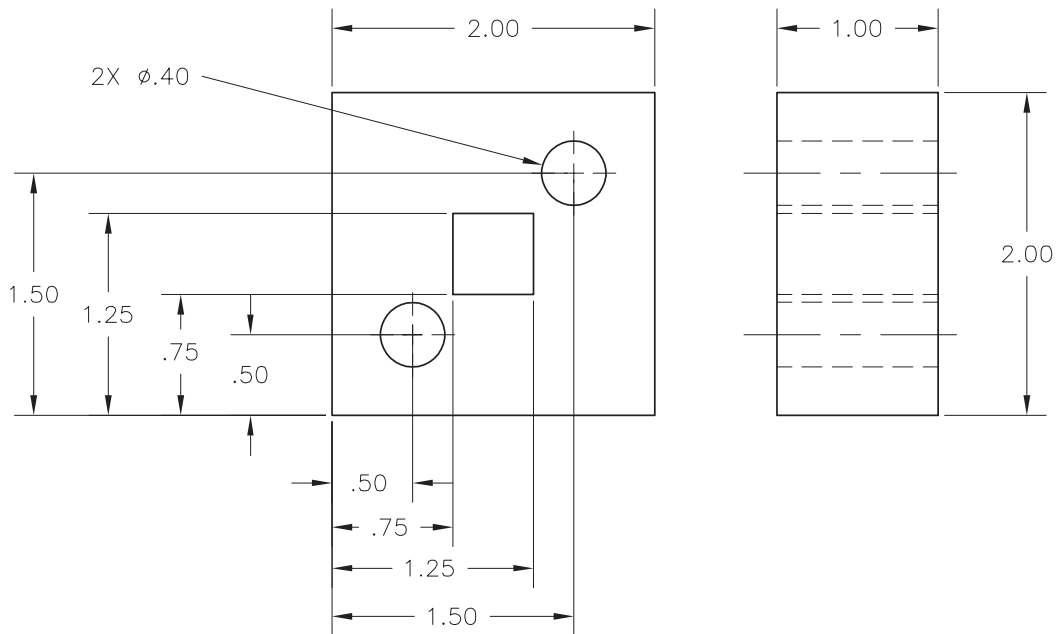
This problem can be used with the following Glencoe textbooks:

Textbook	Chapter
<i>Hands-On AutoCAD</i>	12
<i>Hands-On AutoCAD LT</i>	12
<i>Mechanical Drawing</i>	11

CAD Problem 5

Spacer

Make an isometric drawing of the spacer.



Autodesk Inventor® Users: Create a model of the spacer. Display it in the isometric view.

This problem can be used with the following Glencoe textbooks:

Textbook	Chapter
<i>Hands-On AutoCAD</i>	4
<i>Hands-On AutoCAD LT</i>	4
<i>Mechanical Drawing</i>	12
<i>Applying AutoCAD 2006</i>	37
<i>Applying AutoCAD 2007</i>	38
<i>Designing with Inventor 10</i>	3