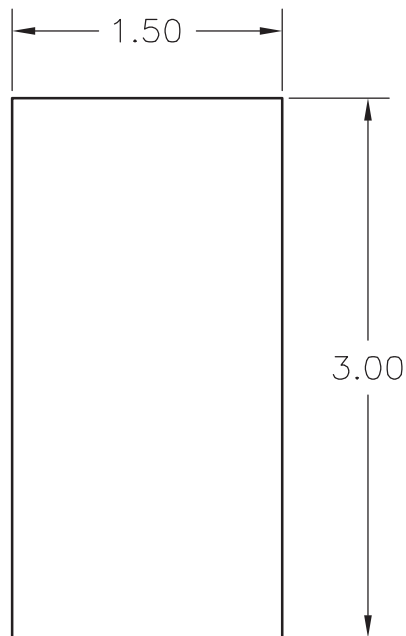


# AutoCAD Problem 1

## Rectangle

Create the rectangle shown below using the **LINE** command. Use AutoCAD's automatic alignment features to create the rectangle at exactly the size shown.



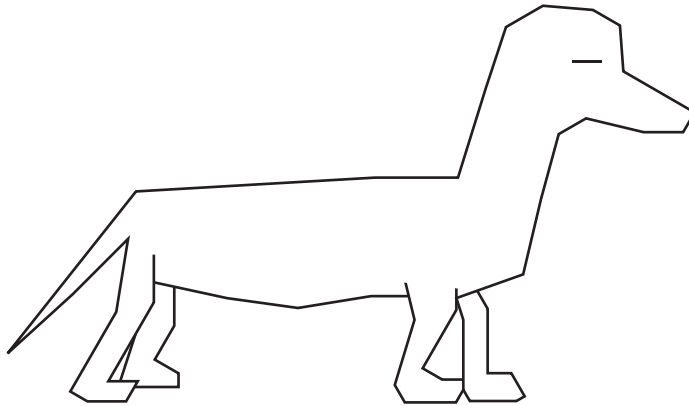
This problem can be used with the following Glencoe textbooks:

<b>Textbook</b>	<b>Chapter</b>
<i>Hands-On AutoCAD</i>	1
<i>Hands-On AutoCAD LT</i>	1
<i>Mechanical Drawing</i>	4, 5
<i>Applying AutoCAD 2006</i>	4
<i>Applying AutoCAD 2005</i>	4

## AutoCAD Problem 2

### Line Drawing Practice

Create a drawing of a dog using the LINE and POINT commands. The illustration below is for example only. Be creative!



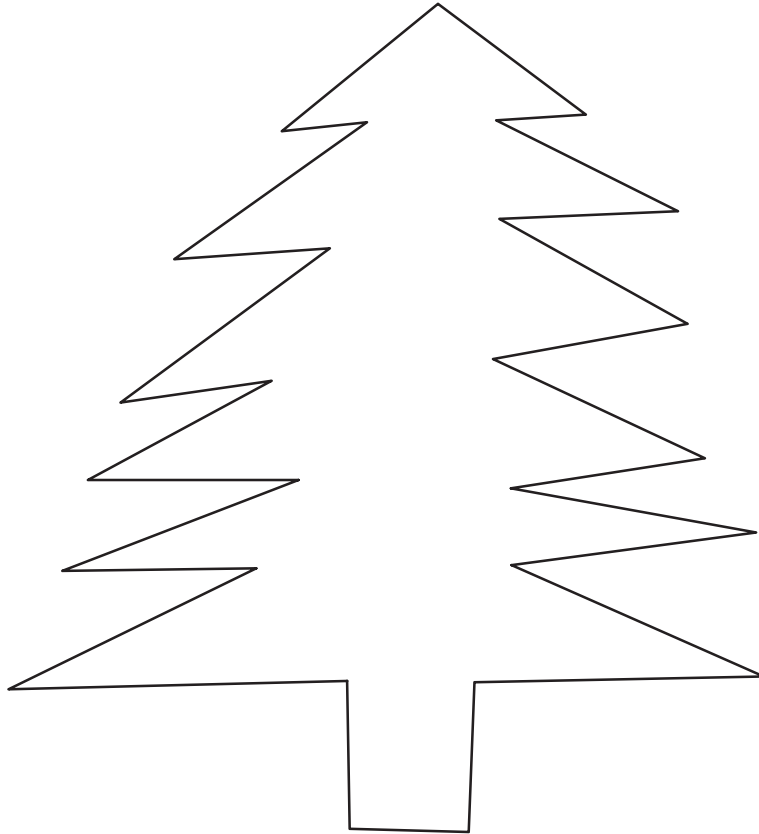
This problem can be used with the following Glencoe textbooks:

<b>Textbook</b>	<b>Chapter</b>
<i>Hands-On AutoCAD</i>	1
<i>Hands-On AutoCAD LT</i>	1
<i>Mechanical Drawing</i>	4, 5
<i>Applying AutoCAD 2006</i>	3
<i>Applying AutoCAD 2005</i>	3

## AutoCAD Problem 3

### Line Drawing Practice

To practice using the LINE command, create the fir tree shown below.



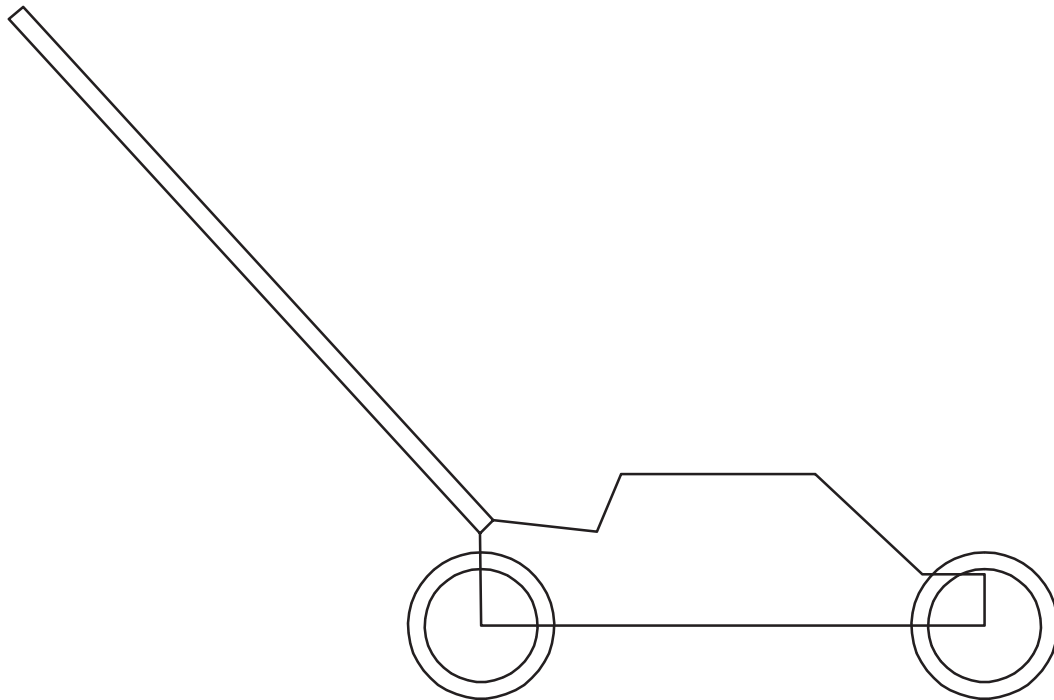
This problem can be used with the following Glencoe textbooks:

<b>Textbook</b>	<b>Chapter</b>
<i>Hands-On AutoCAD</i>	1
<i>Hands-On AutoCAD LT</i>	1
<i>Mechanical Drawing</i>	4, 5
<i>Applying AutoCAD 2006</i>	4
<i>Applying AutoCAD 2005</i>	4

## AutoCAD Problem 4

### Sketching Practice

Create two sketches of the simple lawn mower shown below. Make the first sketch by hand using pencil and paper. Make the second sketch using AutoCAD.



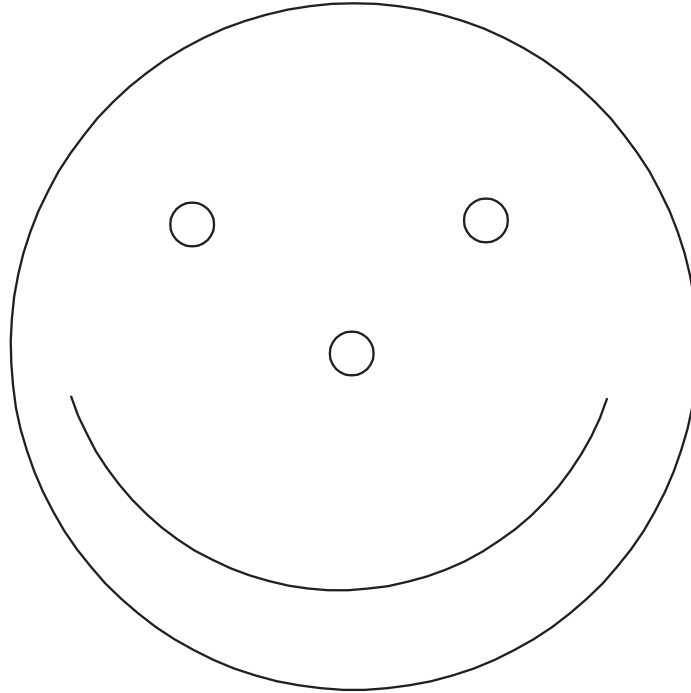
This problem can be used with the following Glencoe textbooks:

<b>Textbook</b>	<b>Chapter</b>
<i>Hands-On AutoCAD</i>	2
<i>Hands-On AutoCAD LT</i>	2
<i>Mechanical Drawing</i>	2
<i>Applying AutoCAD 2006</i>	18
<i>Applying AutoCAD 2005</i>	20

## AutoCAD Problem 5

### Circles and Arcs

Practice creating circles and arcs in AutoCAD by reproducing the “happy face” shown below.



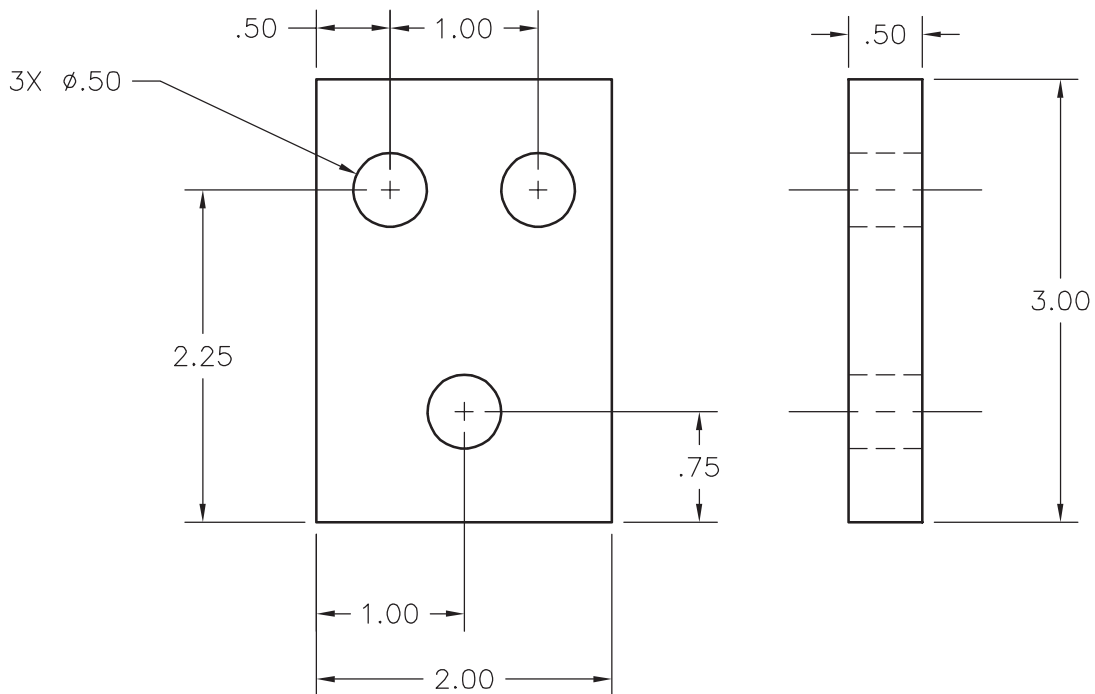
This problem can be used with the following Glencoe textbooks:

<b>Textbook</b>	<b>Chapter</b>
<i>Hands-On AutoCAD</i>	2
<i>Hands-On AutoCAD LT</i>	2
<i>Mechanical Drawing</i>	4
<i>Applying AutoCAD 2006</i>	4
<i>Applying AutoCAD 2005</i>	4

## AutoCAD Problem 6

### Mounting Block

Create three versions of the mounting block shown below: a hand sketch, a hand (board) drawing using instruments, and an AutoCAD drawing. Create the hand drawing and the AutoCAD drawing at the sizes shown below.



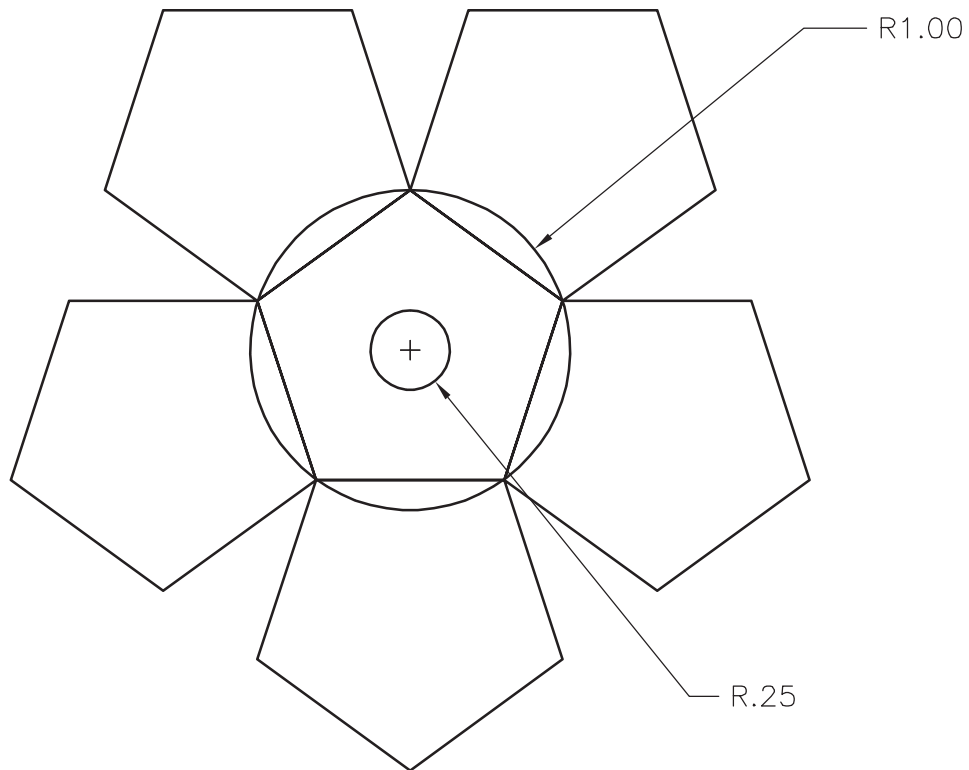
This problem can be used with the following Glencoe textbooks:

Textbook	Chapter
<i>Hands-On AutoCAD</i>	2, 5, 6
<i>Hands-On AutoCAD LT</i>	2, 5, 6
<i>Mechanical Drawing</i>	2, 7
<i>Applying AutoCAD 2006</i>	18, 26
<i>Applying AutoCAD 2005</i>	20, 25

## AutoCAD Problem 7

### Drawing and Editing Practice

Create the figure shown below using the CIRCLE, POLYGON, and MIRROR commands. Estimate all dimensions not shown.



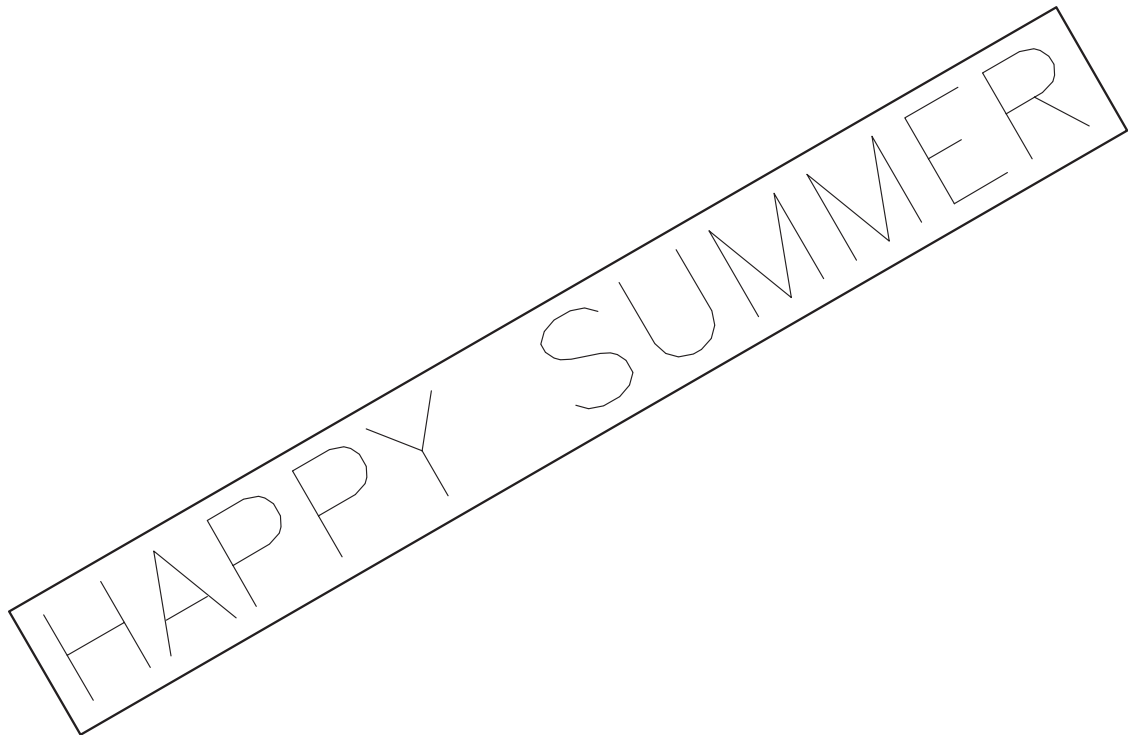
This problem can be used with the following Glencoe textbooks:

<b>Textbook</b>	<b>Chapter</b>
<i>Hands-On AutoCAD</i>	3
<i>Hands-On AutoCAD LT</i>	3
<i>Mechanical Drawing</i>	5
<i>Applying AutoCAD 2006</i>	4, 16
<i>Applying AutoCAD 2005</i>	4, 16

## AutoCAD Problem 8

### Rectangle

Create a sign similar to the one below. You may replace the text with any appropriate message, but be sure to place the sign at a 30° angle.



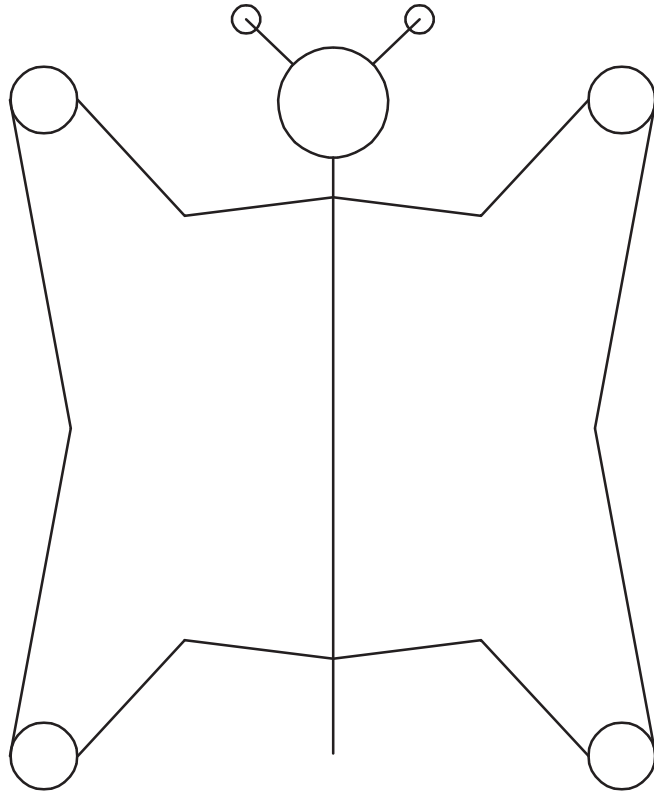
This problem can be used with the following Glencoe textbooks:

<b>Textbook</b>	<b>Chapter</b>
<i>Hands-On AutoCAD</i>	3
<i>Hands-On AutoCAD LT</i>	3
<i>Mechanical Drawing</i>	5, 9
<i>Applying AutoCAD 2006</i>	17
<i>Applying AutoCAD 2005</i>	17

## AutoCAD Problem 9

### Mirroring Objects

Create half of the butterfly using AutoCAD's basic drawing commands. Then create the other half using the MIRROR command.



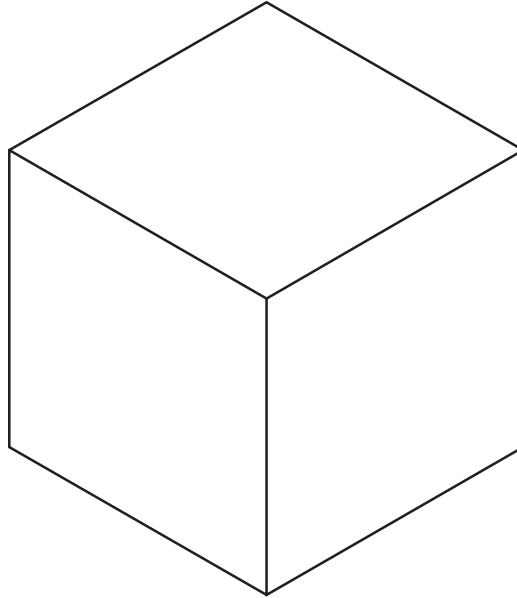
This problem can be used with the following Glencoe textbooks:

<b>Textbook</b>	<b>Chapter</b>
<i>Hands-On AutoCAD</i>	3
<i>Hands-On AutoCAD LT</i>	3
<i>Mechanical Drawing</i>	5
<i>Applying AutoCAD 2006</i>	16
<i>Applying AutoCAD 2005</i>	16

## AutoCAD Problem 10

### Isometric Cube

Create the isometric drawing of a cube. Make each side of the cube 3.00".



This problem can be used with the following Glencoe textbooks:

<b>Textbook</b>	<b>Chapter</b>
<i>Hands-On AutoCAD</i>	4
<i>Hands-On AutoCAD LT</i>	4
<i>Mechanical Drawing</i>	12
<i>Applying AutoCAD 2006</i>	37
<i>Applying AutoCAD 2005</i>	35