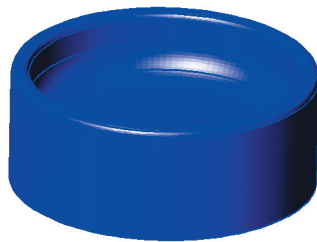
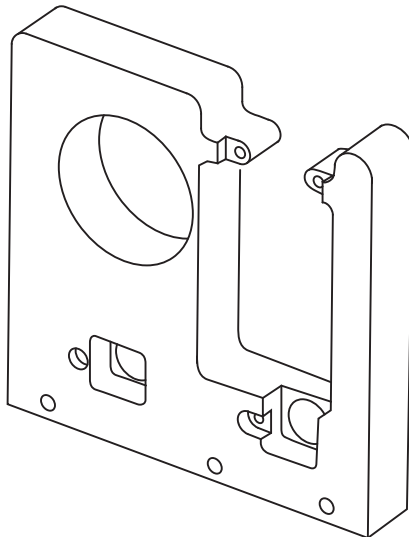


Answers to CAD Problems

1. Solid models will vary. Encourage students to be creative in their designs while keeping in mind that the lamp will be used in an office setting and must fit on a desk.
2. Encourage students to use their creativity to create the water dish. However, if they use the exact dimensions shown on the problem page, the finished product will look similar to the one shown below.



3. Student models should resemble the one shown on the problem page. Their modeling strategies are just as important in this problem as their final solid models. You may want to ask them to submit their modeling strategies on paper before they begin the modeling process.
- 4.



5. Process sheets will vary. Students should be able to explain their process decisions.